



ONLINE TIMED AUCTION

MAJOR FULL SERVICE STEEL FOUNDRY CLOSING! FINAL AUCTION OF ALL REMAINING FOUNDRY RELATED ITEMS

**BIDS START
CLOSING
WEDNESDAY,
MAY 8
10:00 A.M.**

SIVYER STEEL CASTINGS FOUNDRY
225 33RD STREET, BETTENDORF, IOWA 52722

INSPECTION:
Monday, May 6
& Tuesday, May 7,
9:00 A.M. to 4:00 P.M.



ELGIN MDL. PELICAN SERIES SE
STREET SWEEPER



ATLAS MDL. 300MH MATERIAL HANDLER



ZENAR 63' SPAN 20/10 T. CLASS E HOT METAL CRANE



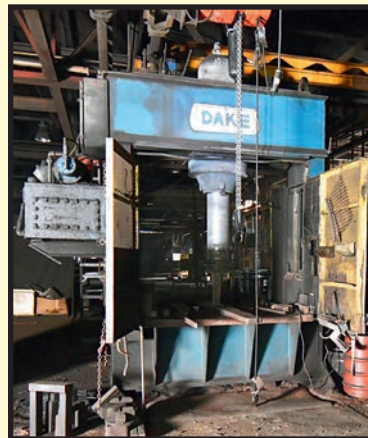
BEAVERMATIC 12'W. X 12'L. X 8'H.
GAS FIRED CAR BOTTOM FURNACE



TENOVA ARC
FURNACE CONTROL



TINIUS OLSEN TENSILE TESTER



DAKE 300 T.
HYDRAULIC
STRAIGHTENING
PRESS

WHEELABRATOR
SUPER 72"
"TUMBLAST"
SHOTBLASTING
MACHINE



**2
AVAILABLE**

2022

2013

FOR BIDDING AT THIS AUCTION. Go to www.pmi-auction.com and click on BidSpotter on our calendar page for this auction sale.

**18% BUYER'S PREMIUM
WILL APPLY**

Read Partial Terms
& Conditions on Page 4

Sale Conducted By: **PLANT & MACHINERY INC.**
AUCTIONEERS • APPRAISERS • LIQUIDATORS • REAL ESTATE
1304 Langham Creek Drive, Suite 454, Houston, Texas 77084

PHONE: (713) 691-4401

FAX: (713) 672-7905

E-MAIL: pmi@pmi-auction.com
WEBSITE: www.pmi-auction.com

In Conjunction With:



2022



OVERHEAD BRIDGE CRANES

ZENAR 20/10 T. X 63'-2-1/4" SPAN FOUNDRY RATED TOP RUNNING DOUBLE GIRDER, new 2022, Class E rated, cab/radio controls, 20 T. cap. main hoist, 10 T. cap. aux. hoist, 63'-2-1/4" span, 30' lift ht., digital crane scale w/read-out, full-length service platform, S/N 8914 (orig. cost: \$732,000.00).

ZENAR 20 T. X 63'-2-1/4" SPAN FOUNDRY TOP RUNNING DOUBLE GIRDER, next 2014, Class E rated, cab/radio controls, 20 T. cap. main hoist, 63'-2-1/4" span, 30' lift ht., full-length service platform, S/N 8565.

ZENAR 15 T. X 55' (EST.) TOP RUNNING DOUBLE GIRDER CRANE, 55' approx. span, cab/radio controls, S/N 4880.

MOLDING SYSTEMS

KLOSTER VERSA-MULL TYPE III DOUBLE ARTICULATED MIXER, 2,000-lb. per minute cap., operator's pulpit w/joystick controls, pwr. rotation primary and both secondary arms, 8'-6" discharge ht., 14' primary arm reach, 5' secondary arm reach, 24'-3" max. reach, 50 HP, Alfaset resin system. Kloster 60 TPM sand heater/cooler/classifier, (2) large rectangular compaction tables, S/N 8097-VM3-2000, system installed 2009.

TINKER OMEGA ARTICULATED MIXER MDL. TOM1200, 1200-lb. per minute cap., Next Gen 2 PLC controls, pwr. primary and secondary arm rotation, Alfaset resin system, feed hopper, pneumatic transporter, (2) Kloster 45 TPH sand heater/cooler/classifiers, vibratory compaction tbl., H. D. roller conveyor molding line, 90 deg. turn unit, Kloster boiler and dust collector, system installed 2010.

KLOSTER VERSA-MULL TYPE II ARTICULATED MIXER, 1,000-lb. per minute cap., pwr. primary arm rotation, 7'-3" discharge ht., 11'-8" primary arm reach, 15'-8" total reach, Alfaset resin system, feed hopper, Palmer additive system, Kloster 60 TPH sand heater/cooler/classifier, S/N MS-7428-VN2-1000, installed 2011.



MOLD SYSTEM SUPPORT EQUIPMENT
KLOSTER TILT-FRAME 2-STATION MOLD SPRAY COATING SYSTEM, large cap., w/(2) coating pump/reservoir systems, catch pan, hyd. system.

MATERIAL HANDLER W/MAGNET

ATLAS MDL. 300MH, new 2013, diesel, wheeled, 2,000-lb. cap., outriggers, dual solid tires on front and rear, H.O.M.: 9,040, S/N 301266. Equipped w/Walker Mdl. 4505H 45" dia. magnet, S/N 14D53.



STREET SWEEPER

ELGIN MDL. PELICAN SERIES SE, 3-wheel mechanical boom sweeper w/isolation mounted cab, 3,052 H.O.M.

FORKLIFTS

YALE 19,050-LB. BASE CAP. MDL. GP240DB, diesel, 13,640-lb. truck weight, 147.6" lift ht., tandem front tires, solid tires, 56" forks, enclosed cab, 8,664 H.O.M., S/N B876E01551Z.

YALE 15,000-LB. BASE CAP. MDL. GLC155CANGBV106, 13,750-lb. cap. as equipped, 133" lift ht., LPG pwrd., cushion tires, 2-stage mast, S/N B879V01754C.

CATERPILLAR 6,000-LB. BASE CAP. MDL. P60001, 5,500-lb. cap. as equipped, 186" lift ht., 3-stage mast, LPG pwrd., cushion tires, S/N AT13F10141.

HYSTER 6,000-LB. BASE CAP. MDL. H60FT, 5,350-lb. cap. as equipped, 188" lift ht., LPG pwrd., 3-stage mast, side shift, S/N L177B20231E.



YALE 19,050-LB. BASE CAP. DIESEL FORKLIFT

UNUSED



SAND SYSTEMS & SUPPORT EQUIPMENT

GENERAL KINEMATICS 18' X 14' SHAKEOUT DECK, new 2013, never installed, two-mass design, approx. 60 T. cap.

GUDGEON THERMIFIRE SAND HEATER/COOLER/CLASSIFIER MDL. RES-A026, new 2010, S/N 1179.

PLUS: SEVERAL MACAWBER AND WHIRL-AIR FLOW SAND TRANSPORTERS W/ALLEN BRADLEY PROGRAMMABLE CONTROLLER; (3) LARGE MODULAR CONSTRUCTION SAND BINS; ERIEZ ELECTROMAGNET MDL. MC2SE7330, 33.1-amp, 115 v., S/N 291022; HI-VAC ELECTRIC POWERED SAND VACUUM SYSTEMS.

DON'T MISS THIS SALE!



SHOT BLASTING EQUIPMENT

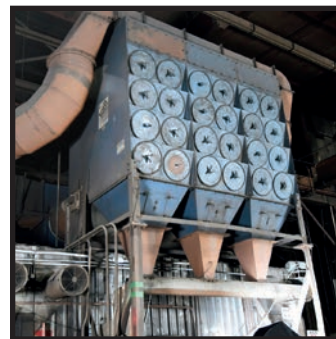
WHEELABRATOR SUPER 70 "TUMBLAST" SHOTBLASTING MACHINE, 63" x 96" opening size, skip loader unit, 50 HP direct drive 24" dia. wheel, Wheelabrator shaker style dust collector, S/N A56540.

WHEELABRATOR TABLE BLAST MACHINE, 72" dia. extra heavy cap. tbl., manganese steel lining, recirculating shot system, 50 HP direct drive shot wheel, 500-lb. shot hopper w/air feed system, Torit cartridge style dust collector, S/N N.A.

FREE STANDING BLAST ROOM, new 2019, approx. 15'W. x 20'D. x 15'H., H.D. rail car, winch system, unitized panel construction, recirculating media system, dust collection system, Axxiom 10 cu. ft. blast pot w/shot filtration system.

MELT SHOP

(3) WHITING 9' DIAMETER HYDRO-ARC MELTING FURNACES, approx. 8 T. cap., hyd. tilt drive, Pennsylvania 4,000 KVA type OW transformer, 13,200 v. primary, recently retrofitted w/Tenova Mdl. LPV4043 servo electrode control system, auto. tap changer, auto. vacuum breaker, Nidec variable frequency drives, several new copper lead sets, several spare furnace roofs, quantity of new electrodes, ductwork and fume/dust collector system. **PLUS:** (2) GAS FIRED LADLE PRE-HEAT SYSTEMS; (2) 10 T. CAP. LADLE HANDLERS; (8) 10 T. CAP. BOTTOM POUR LADLES; (2) BOTTOM-DROP CLAM SHELL SCRAP BUCKETS; LARGE QTY. SLAG POTS; WALKER 54" CRANE MAGNET; (3) CARDOX FIRE SUPPRESSION SYSTEMS.



EVERYTHING MUST BE SOLD!



PICKUP TRUCK

2013 FORD F-250 SUPER DUTY, 4X4, extended cab, 123,000 miles, VIN 1FT7X-2B62DEA44114.

2 AVAILABLE

CAR-BOTTOM HEAT TREAT FURNACES

BEAVERMATIC CAR-BOTTOM FURNACE MDL. 12X8X12DGCBF, new 2012, 12'W. x 12'L. x 8'H. interior dimensions, 72,000-lb. car weight cap., 1,850 deg. max. temp. 350 deg. min. temp., ceramic wool lining, pwr. car, Maxon Mdl. 300SMA11-A11-B21A0 shut-off valves, Dungs combustion controls, (10) total burners, S/N 1011-175/8.

BEAVERMATIC CAR-BOTTOM FURNACE MDL. 7X14X7DGCBF, 7'W. x 14'L. x 7'H. interior dimensions, 30,000-lb. car weight cap., 1,850 deg. max. temp. 500 deg. min. temp., ceramic wool lining, pwr. car, (this furnace is currently needing a relining), S/N 40153/8.



ELEMENT ANALYZER

HANDHELD XRF, new 2022, Thermo Scientific Niton 980 Plus.

2022



STRAIGHTENING PRESS
DAKE 300 T. CAP. HYDRAULIC STRAIGHTENING PRESS.



COOLING CIRCUIT EQUIPMENT
EVAPCO COOLING TOWER MDL. AT19-2H8, qty. of (4) 7-1/2 HP vertical pumps, butterfly valves, S/N 21P118711; EVAPCO COOLING TOWER MDL. AT-243, 2,400 gal. per minute; TRANE 300 T. CHILLER SYSTEM.



AIR COMPRESSOR SYSTEMS
(3) SULLAIR 200 HP WATER COOLED ROTARY SCREW AIR COMPRESSORS (two units recently rebuilt); ATLAS COPCO MDL. FD-1750 REFRIGERATED AIR DRYER, new 2019, 1,750 CFM cap.

DON'T MISS THIS SALE!

PATTERN SHOP

COMPLETE PATTERN SHOP INCL.: DELTA ROCKWELL VERTICAL BANDSAW; WALKER TURNER RADIAL DRILL; RIDGID COMPOUND MITER SAW; STENCIL MACHINES; WALKER TURNER VERTICAL BANDSAW; SPINDLE SANDERS; DELTA TABLE SAW; JOINTER; 14" DELTA PLANER; BEAVER VERTICAL TURRET MILL; SCROLL SAW; TILT FRAME VERTICAL BANDSAW; MARVEL NO. 8MK1, S/N 82174.

MAGNETIC PARTICLE INSPECTION

MAGNAFLUX MDL. CSV-20, 20,000 max. output amps FWDC, remote control stand, 5 gal. spray pot w/agitator, spray head, (2) 24" x 48" copper plate material stands, S/N 623432-01; SEVERAL MORE MAGNAFLUX MAGNETIC PARTICLE INSPECTION MACHINES AVAILABLE.

BIDS START CLOSING WEDNESDAY, MAY 8 10:00 A.M.

INSPECTION: Monday, May 6 & Tuesday, May 7, 9:00 A.M. to 4:00 P.M.



METALLURGICAL LAB & SMALL TOOLS

LECO TCH600 ELEMENTAL ANALYZER; APPLIED RESEARCH SPECTROMETER MDL. 3460, 9-elements, S/N 2144; WAYGATE TECHNOLOGIES STRUCTURIX NDT-U X-RAY FILM DEVELOPER new 2022; TINIUS OLSEN TENSILE TESTER, hyd. drive, computer read-out; TINIUS OLSEN MDL. 84 CHARPY IMPACT TESTER; AMETEK STEEL TESTING MACHINES INC.; BRINELL TESTING MACHINE; WILSON MDL. 5JRBB ROCKWELL TYPE HARDNESS TESTER, S/N 1510; HITACHI-SEIKI TSL15 CNC LATHE, Siccos 21L CNC control, 6" 3-jaw chuck; INDEX VERTICAL TURRET MILL; THERMOLINE OVEN; HEAVY DUTY ELECTRIC FURNACE, 1,850 deg.; HEAVY DUTY FURNACE MDL. HD10187, 2,000 deg. F, S/N 81212; BAILEIGH ENGINE LATHE MDL. PL1236DRO; ABELL HOWE 1/2 T. CAP. JIB CRANE; HYD-MECH MITERING HORIZ. BANDSAW MDL. S20, S/N 20195057; KALAMAZOO 6" BELT SANDER; CARBORUNDUM ABRASIVE CUT-OFF SAW.

PARTIAL TERMS & CONDITIONS:
An 18% Buyer's Premium Will Apply.
Everything will be sold to the highest bidder or bidders for cash in accordance with the auctioneer's Customary Terms of Sale, copies of which will be posted on our website.
ALL PAYMENTS MUST BE MADE BY CASHIER'S CHECK, WIRE TRANSFER OR COMPANY CHECK WITH BANK LETTER GUARANTEEING PAYMENT TO PLANT & MACHINERY INC.
Here is an example of what your letter should be: Mr. "Customer Name" is a customer of this bank. This bank will guarantee unconditional payment to PMI on the account listed herein up to the amount of \$ _____. This letter is good until June 10, 2024.
In default of payment of bills in full within the time therein specified, the Auctioneer in addition to all other remedies allowed by law, may retain all monies received as deposit or otherwise, as liquidated damages. All items must be removed by the time announced at the start of the sale.
Lots not paid for and/or removed within the time allowed may be resold at public or private sale without further notice, and any deficiency, together with all expenses and charge of resale, will be charged to the defaulting purchaser.
The buyer acknowledges that he or an agent has inspected all of the assets upon which he will be bidding and/or does purchase.
Buyer agrees to accept assets purchased "AS IS," WITH "ALL FAULTS"

AND "WITH REMOVAL AT BUYER'S RISK AND EXPENSE." THE AUCTIONEER EXPRESSLY DISCLAIMS ON THE PART OF THE AUCTIONEER AS AGENT AND THE SELLER, ANY WARRANTY AS TO FITNESS OR USABILITY OF ALL THE ASSETS, AND THE BUYER EXPRESSLY WAIVES ANY CLAIM IN RESPECT TO ANY POSSIBLE FUTURE USE OF ANY ASSET PURCHASED FOR ANY PURPOSE WHATSOEVER.
The buyer does hereby assume and does agree to indemnify and hold the auctioneer harmless from any future claim which shall pertain to the fitness or use of that asset as being purchased. Riggers, movers, electricians and buyers performing work at the Auction Site must provide PMI with evidence of insurance. The insurance coverage must be at a level acceptable to PMI and to the seller. PMI reserves the right to withdraw items, alter the order of the sale, accept bids from the seller, and group lots as it may deem appropriate. This auction may include consignment items.
Although all information has been obtained from sources deemed reliable, the auctioneer and seller make no warranty or guarantee, expressed or implied, as to the accuracy of the information herein contained, or contained in our catalog. It is for this reason that buyers should avail themselves of the opportunity to make inspection prior to the auction. Although it is not likely, auction sales are subject to cancellation or postponement. Kindly contact auctioneer prior to attendance.
These terms and conditions may be modified or supplemented by language in the catalog available online or by announcement at the start of the sale. Bidders should be attentive to those announcements and to the catalog language.