



AUCTION

**MULTIPLE LOCATIONS IN TEXAS, KENTUCKY & LOUISIANA
LIVE ONLINE WEBCAST (NO ONSITE BIDDING)**

**FEATURING: CNC & MANUAL MACHINE TOOLS; FABRICATING EQUIPMENT; FORKLIFTS; PRECISION TOOLING & ACCESSORIES;
WIDE SELECTION OF SHOP SUPPORT EQUIPMENT & MUCH MORE!**



**2
AVAILABLE**

**LIKE
NEW**

**WEDNESDAY,
SEPTEMBER 28
10:00 A.M.
LIVE ONLINE
WEBCAST
(NO ONSITE
BIDDING)**

HENAN BAISHUN MDL. CAK63285 CNC FLATBED LATHE



ACCUSHEAR 1/4" X 10' MDL. 625010 HYDRAULIC SHEAR



2016

5-AXIS

**120-POS.
ATC**

HYUNDA WIA KH1000 CNC HORIZONTAL MACHINING CENTER



ACER ULTIMA MDL. 3VK VERTICAL TURRET MILL

**FOR BIDDING AT
THIS AUCTION.**
Go to
www.pmi-auction.com
and click on
BidSpotter
or **proxibid**
on our calendar
page for this
auction sale.

**18% BUYER'S
PREMIUM
WILL APPLY**

Read Partial Terms
& Conditions on
Back Page



PIRANHA 50 T. CAP. MDL. P3 IRONWORKER

**INSPECTION: Varies By Location.
See Inside for Details.**



TOYOTA 5,000-LB. BASE CAP. FORKLIFT

Sale Conducted By:

PLANT & MACHINERY INC.

AUCTIONEERS • APPRAISERS • LIQUIDATORS • REAL ESTATE

PMI LA Lic. #AB-396 • Ron Moore, TX Lic. #7314, LA Lic. #851, KY Lic. #25662

HOUSTON • DALLAS • ST. LOUIS

Headquarters:

**1304 Langham Creek Drive, Suite 454
Houston, Texas 77084**

PHONE: (713) 691-4401

FAX: (713) 672-7905

**E-MAIL: pmi@pmi-auction.com
WEBSITE: www.pmi-auction.com**



**LIKE
NEW**

**2
AVAILABLE**

**LOCATION 1
HPS HYDRAULICS
4504 ILLINOIS AVENUE
LOUISVILLE, KENTUCKY 40218**

INSPECTION: By Appointment Only,
September 26 & 27.
Contact Dave Baughman at
(502) 581-8778 for Appointment.

CNC FLATBED LATHES

(2) HENAN BAISHUN MDL. CAK63285, Fanuc Oi-TD Mate CNC control, 24.8" sw. over bed, 13.78" sw. over crosslide, 112" turning length, 4.09 spdl. bore, US style quick change toolpost, MT tailstock, steadyrest, (1) w/3-jaw hyd. chuck (approx. 40 H.O.M.), (1) w/4-jaw chuck (new, never been used).

**WEDNESDAY,
SEPTEMBER 28
10:00 A.M.
LIVE ONLINE WEBCAST
(NO ONSITE BIDDING)**

**LOCATION 2
RPM MACHINE
3016 WESTSIDE, SUITE A
PASADENA, TEXAS 77502**

INSPECTION: By Appointment Only,
September 26 & 27.
Contact Juan Marchan at
(956) 361-5200 for Appointment.

ENGINE LATHES

VICTOR MDL. 1760T, 10" dia. 3-jaw chuck, taper, S/N 97108.

VICTOR MDL. 1740K, 10" dia. 3-jaw chuck.

WEBB MDL. TSL-1000D, 8" dia. 3-jaw chuck.

**VERTICAL
TURRET MILL**

VICTOR 10" X 54" MDL. CD-3VS, pwr. feeds, D.R.O., 3 HP motor, S/N 960693.

**PLUNGE ELECTRICAL
DISCHARGE MACHINE**

EASCO MDL. ES-2100.

**MISCELLANEOUS
SHOP & WAREHOUSE
EQUIPMENT**

SMALL TOOLS; MISC.

FORKLIFT

YALE 6,000-LB. BASE CAP., 3-stage mast.

**MULTIPLE LOCATIONS
LIVE ONLINE WEBCAST
(NO ONSITE BIDDING)**



VICTOR MDL. 1760T 17" X 60" ENGINE LATHE



VICTOR MDL. 1740K 17" X 40" ENGINE LATHE



WEBB MDL. TSL-1000D 14" X 40" ENGINE LATHE

**FOR BIDDING AT
THIS AUCTION. Go to
www.pmi-auction.com
and click on
BidSpotter or **proxibid** on
our calendar page for this
auction sale.**

INSPECTION:
Varies by Location.
See Details for Each Location.



VICTOR 10" X 54" VERTICAL TURRET MILL



YALE 6,000-LB. BASE CAP. FORKLIFT

LOCATION 3 INNOVEX DOWNHOLE SOLUTIONS

3909 KERMIT HWY.,
ODESSA, TEXAS 79764

INSPECTION: By Appointment Only.
Chris South (832) 948-9105.

5-AXIS CNC HORIZONTAL MACHINING CENTER

HYUNDAI WIA MDL. KH1000, new 2016, Fanuc Series 31i, NC rotary tbl. .001 degree, 82.7" X, 53.1" Y, 55.1" Z-axis travels, 39.4" x 39.4" pallet size, 2-pallet APC, 6,600-lb. tbl. cap., Tsudakoma RBA-500K rotary w/ steadyrest, 8,000 RPM, 35 HP, CAT-50, 120-pos. ATC, Renishaw tool length measurement sys., part probing, 1,000 PSI thru spdl. coolant, S/N G3789-0125.



2016

120-POS.
ATC

2016



5-AXIS



LOCATION 4 INNOVEX DOWN SOLUTIONS 11006 LUCERNE STREET HOUSTON, TEXAS 77016

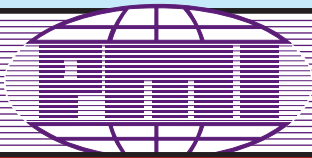
INSPECTION: Appointment Only, September 26 & 27.
Contact Chris South at (832) 948-9105 for Appointment.

FORKLIFT

LINDE 9,200-LB. BASE CAP. MDL. H50T, LP pwrd., 159.5" lift ht., 60" forks, side shift, solid tires, S/N H2X394A02369.



**WEDNESDAY, SEPTEMBER 28 • 10:00 A.M.
LIVE ONLINE WEBCAST (NO ONSITE BIDDING)**



AUCTION

INSPECTION:
Varies by Location.
See Details for Each
Location.

WEDNESDAY, SEPTEMBER 28 • 10:00 A.M.
LIVE ONLINE WEBCAST (NO ONSITE BIDDING)



AMERICAN PLASTIC MACHINERY CORP. VACUUM FORMING MACHINE



**ACER ULTIMA MDL. 3VK
VERTICAL TURRET MILL**



PETERSON APPROX. 12'L X 8'W PANEL SAW

**LOCATION 6
OFFSHORE CLAMP
& PROTECTORS
435 SPRING HILL DRIVE
SPRING, TEXAS 77386**

INSPECTION: By Appointment Only.
Contact Chis (281) 351-5766.

VACUUM FORMING MACHINES

APM (AMERICAN PLASTIC MACHINERY CORP.) FRUGAL DELUXE 3648 INTEGRITY, Model Code TF/SFS/DP, 36" x 48" tbl., 220 v., 3-phase, 60 hz., Busch 1-1/2 HP vacuum pump, 80 gal. vacuum tank, 1" ASCO vacuum valve, 80" top stroke, 24" bottom stroke, Allen Bradley Mdl. SLC5/02 PLC touch screen control, Quartz Cloth radiant panel top glass faced radiant panel bottom heater type, (12) top and (12) bottom zones, Destaco pneu. clamp frame on major bars, lane clamp frame on minor bars, S/N 0064.

BEL-O-VAC, sheet size 48 x 48, depth of draw 22", fully adjustable material clamping, tooling tbl.: 3-1/4" pneumatic drive cylinder 300-lbs. seal pressure, w/adjustable slotted track for rapid tool mounting, solid state programmable heat timing unit, coupled w/programmable percentage control unit, heater panel 32,000 watts infrared radiant panel, w/size down option; vacuum pump, high volume pump, onboard 40 gal. surger tank, construction is post and beam modular frame system, recommended for plastics ABS - PVC - PET - Polystyrene-Styrene-Kydex-Polypropylene; plastic gages up to 1/4", electric requirements are 220 v., 3-phase, 75 amps.

VERTICAL TURRET MILL

ACER ULTIMA MDL. 3VK, 10" x 50" tbl., Acu-Rite Millmate 2-axis D.R.O., long. pwr. feed, 3 HP variable spd. head, (2) Craftsman vises, S/N 96060350.

MILL DRILLS

GRIZZLEY MDL. G1126, new 2011, (2) Craftsman vises, 1.5 HP motor, S/N 13F0972; **WILTON**, (2) machine vises, compound tbl.; **PRECISION 30 MDL. 1200109**.

MILLING MACHINE ACCESSORIES

ALIGN MDL. AL-500D POWER TBL. FEED (new in box).

HORIZONTAL BANDSAW

JET 11" MDL. HBS-11M, 2 HP motor, S/N 212921980.

VERTICAL BANDSAW

CRAFTSMAN CONTRACTOR SERIES 14", 1-1/2 HP motor, 6" depth of cut.

PANEL SAW

PETERSON APPROX. 12'L. X 8'W., pneu. lift on tbl., Baldor 3 HP cutting head motor, Dayton 3/4 HP feed motor, dust collector.

PLASTIC RAW MATERIAL

WIDE SELECTION up to 2" thk.

WELDING MACHINE & CHILLER

MILLER DIALARC MDL. HF.

WELDING ACCESSORIES

H.D. 9'L. METAL WELDING TBL. w/vises.

SEWING MACHINES

(3) SEIKO.

(2) CONSEW MDL. 206RB-5.



BEL-O-VAC MDL. 4848 VACUUM FORMING MACHINE



JET 11" MDL. HBS-11M HORIZONTAL BANDSAW



(1 OF 3) SEIKO SEWING MACHINES



SAMPLE VIEW OF SUPPORT EQUIPMENT



ROCKWELL DELTA TABLE SAW



MAG BASE DRILL AND DRILL PRESS

LOCATION 6, CONTINUED

SHOP SUPPORT EQUIPMENT & SMALL TOOLS

20 T. HYD. SHOP PRESS; ROCKWELL DELTA TBL. SAW; DEWALT DOUBLE BEVEL SLIDING COMPOUND MITER SAWS; DEWALT MDL. DWS780 12" THK. PLANER; DEWALT PLANER; TEEL MDL. 3P716C PUMP; 6" BELT SANDER; POWERMAX MDL. 5000ER ELECTRIC GENERATOR; PLASTIC BOX w/assorted electrical parts; PLASTIC BOX w/clamps; PARTS WASHER; ARBOR PRESS; HAND TOOLS; PNEUMATIC HAND TOOLS (some new in box); ELECTRIC POWER TOOLS; TOOLBOXES; DELTA DUST COLLECTOR; CRAFTSMAN 12" COMBINATION BANDSAW AND SANDER; ASSORTED DEWALT ROUTERS; MACHINE VISES; NAIL GUNS; DOUBLE END GRINDERS; AIR KING SHOP FANS; PORTABLE DURAHEAT KEROSENE HEATERS; 3", 4" AND 6" WEBBING MATERIAL; ANTI-FATIGUE FLOOR MATS; O.D. MICROMETER SET; MILWAUKEE MAGNETIC BASE DRILL; SCOTCH-BRITE (in boxes); (2) RIDGID 2-IN-1 BLOWER VACUUMS; DEWALT RADIAL ARM SAW; CRAFTSMAN, DELTA AND CLAUSING MDL. 1633, S/N 117810; DRILL PRESSES; O'HAUS MDL. 15S DIGITAL LOAD SCALE.

AIR COMPRESSORS

AIR AMERICAN, 6-1/2 HP motor, 80 gal., 2-stage, 175 PSI max.
BELLAIRE COMPRESSOR MDL. 116V, 3 HP motor, S/N 33540.

FORKLIFT

TOYOTA 5,000-LB. BASE CAP. MDL. 7FGCU25, 2001, 4,500-lb. cap. @24" LC, LP pwr'd., 3-stage mast, 189" lift ht., side shift, solid tires, 5,845 H.O.M., S/N 69504.

OFFSHORE CLAMP & PROTECTORS INVENTORY

PLASTIC SHIPPING CONTAINERS for a variety of offshore oilfield products.



O.D. MIC SET



TOYOTA 5,000-LB. BASE CAP. FORKLIFT



DEWALT MDL. DWS780 12" THK. PLANER



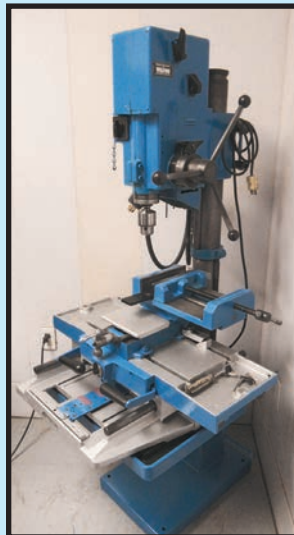
DEWALT DOUBLE BEVEL SLIDING COMPOUND MITER SAW



AIR AMERICAN AIR COMPRESSOR



GRIZZLEY MILL DRILL



WILTON MILL DRILL



O'HAUS MDL. 15S DIGITAL LOAD SCALE



ACCUSHEAR 1/4" X 10' MDL. 625010 HYDRAULIC SHEAR



HTC 200 T. X 12' HYDRAULIC PRESSBRAKE

**LOCATION 7
SUMMIT SEALS
750 ARCHIE STREET
VIDOR, TEXAS 77552**

HYDRAULIC SHEAR

ACCUSHEAR 1/4" X 10' MDL. 625010, new 1991, .250 max. thickness, 10' cutting length, S/N 1343.

MECHANICAL SHEAR

CINCINNATI 1/4" X 12' MDL. 1412, 3/16" cap. mild steel, S/N 30426.

HYDRAULIC PRESSBRAKES

HTC 200 T. x 12', 15' bed.
HTC 155 T. X 12'.

**MECHANICAL PRESSBRAKE
DRIES & KRUMP 10'.**

**BRAKE DIES & PUNCH
TOOLING**

HAND BRAKE

CHICAGO 10' X 1/4" MDL. S-1014, S/N S02040.

IRONWORKERS

PIRANHA MDL. P3, 50 T., S/N 2718.

IRONCRAFTER MDL. 50/50, 50 T. cap. shear, 50 T. cap. punch, 3/4 x 8" flatbar, 4 x 4 x 3/8 angle, 1-3/8" rd.

INSPECTION: By Appointment Only, September 26 & 27. Contact Ed Molanders at (409) 880-9270 for Appointment.

TWIN RAM PUNCH PRESS

CUSTOM 6' working area.

ENGINE LATHE

MONARCH 14" X 30".

**PLASMA CUTTING
MACHINES**

HYPERTHERM 1000 G3 SERIES.
HYPERTHERM POWERMAX 85.
MILLER 8 RECTRUM PLUS.

WELDING POSITIONERS

PROFAX 250-LB. CAP. MDL. WP-250-2, S/N WP-2115.
PANDJIRIS MINIPRO, S/N 14689X26-22.

WELDING MACHINES

MILLER SRH-333; MILLER CP300, Millermatic 10A wire feeder; MILLER CP300, feeder; MILLER MILLERMATIC 250; MILLER SYNCROWAVE 250; MILLER MILLERMATIC 200; MILLER MILLERMATIC VINTAGE.

WIRE FEEDERS

HOBART; (2) MILLER WC115A; MILLER 10E.

DRY ROD OVEN

PHOENIX MDL. 16C, Type 300.



PIRANHA 50 T. CAP. MDL. P3 IRONWORKER

**IRONCRAFTER
MDL. 50/50
50 T. CAP.
IRONWORKER**



**MULTIPLE LOCATIONS IN TEXAS,
KENTUCKY & LOUISIANA**

FOR BIDDING AT THIS AUCTION.
Go to www.pmi-auction.com and click on **BidSpotter** or **proxibid** on our calendar page for this auction sale.



HTC 155 T. X 12' HYDRAULIC PRESSBRAKE



CINCINNATI 1/4" X 12' MDL. 1412 MECHANICAL SHEAR



CUSTOM 6' TWIN RAM PUNCH PRESS



CHICAGO 10' X 1/4" MDL. S-1014 HAND BRAKE



WELLSAW 10" X 16" MDL. 1016 HORIZONTAL BANDSAW

LOCATION 7, CONTINUED

HORIZONTAL BANDSAWS

WELLSAW 10" X 16" MDL. 1016, roller conveyor.
METAL CUTTING BANDSAW 7" X 12" CAP. MDL. RE80UC180AI,
S/N 07054803.

PLATE ROLL

LOWN 48" MDL. B.

SLIP ROLLS

3' PEXTO.

3' MINI.

PIPE THREADERS

(2) MDL. 535, mtd. on A-frame structure.

RIDGID MDL. 300, on tbl.

RAW MATERIAL

I-BEAMS; PIPE; EXPANDED METAL.

MISCELLANEOUS SHOP & WAREHOUSE EQUIPMENT

ELECTRIC POWER TOOLS: INCL. MILWAUKEE MAG BASE DRILL; PORTA BANDSAWS; DRILL MOTORS; COLLINS CHOP SAW; NIAGARA BEADING MACHINE; TRACK TORCH; WELDING TBL.S.; CHICAGO MDL. A1-17FR AND PALMGREN 20" DRILL PRESSES; WELDING WIRE; INGERSON WINCH.

FORKLIFT

DAEWOO 5,000-LB. BASE CAP. MDL. G25S, 173" lift ht., 3-stage mast.



MILLER SYNCROWAVE 250 WELDING MACHINE



48" FINGER BRAKE



PROFAX 250-LB. CAP. WELDING POSTIONER



PEXTO 3' SLIP ROLL



HYPERTHERM POWERMAX 85 PLASMA CUTTING MACHINE



SAMPLE VIEW OF RAW MATERIAL



DAEWOO 5,000-LB. BASE CAP. FORKLIFT



**CINCINNATI BICKFORD 5' X 13" SUPER SERVICE
RADIAL ARM DRILL**

**GRAY 48" MDL. 48RM CNC
VERTICAL TURRET LATHE**



TRENNJAEGER MDL. PMC8 COLD SAW

CNC VERTICAL TURRET LATHE

GRAY 48" MDL. 48RM, new 1978, Allen Bradley control. removed – retrofit candidate, 5-pos. turret, 72" under rail, swings 56" w/48" dia. tbl., 480 v. 3-phase input, converted to DC, 50 HP motor, S/N 10018.

COLD SAW

TRENNJAEGER MDL. PMC8, cutting cap. @ 90 deg. 8.75" x 24"L., cutting cap. @ 45 deg. 8.5" x 17", (6 step) blade spds.: 52–168 IPM, 2-spd. 3-3/4 HP main motor, 1.5 HP hyd. motor, .2 HP coolant pump motor, (2) vert. hyd. hold-downs, hyd. side clamp, swivel vise for miter cutting, hyd. clamping and saw drive, variable stroke and return, 220/440 v., 3-phase, uses 26" blade, S/N GF489 (No loading charge).

SURFACE GRINDER

GALLMEYER & LIVINGSTON MDL. 283, 8" x 22" electromagnetic chuck, 3" extra ht. clearance, 440/460/480 high voltage, 3-phase, 2 HP spd. motor, 1.5 HP hyd. pump motor, 29" max. travel, 1"W. grinding wheel, 2,420 RPM wheel, S/N 283245 (No loading charge).

C-FRAME BROACHING PRESS

WILSON ENGINEERING, 440/480 v., 3-phase, 7.5 HP motor, approx. 5" bore of cylinder, 27" stroke in cylinder, max. clearance or opening w/ram retracted 24-3/4" to bed from face of ram, extended about 2-1/4" past bed into hole, hole can pass 4" parts thru it, 10" throat depth from center to very back and 8-3/4" from center to nearest point of back, 3" dia. ram, 3-1/8" thk. and 14 x 14.5" tbl. plate, 2-7/8" holes thru frame, Vickers relief valve, Racine control valve, footprint 41"W., 71" front to back and 108" high, work-lift (No loading charge).

LOCATION 8

Surplus to the Ongoing Operations of

PINPOINT MACHINE

19995 HWY. 167, DRY PRONG, LOUISIANA 71423

INSPECTION: By Appointment Only, September 26 & 27. Contact Richard Rodgers at (318) 290-3296 for Appointment.

HORIZONTAL/VERTICAL MILLING MACHINE

ROYAL UNIVERSAL MDL. CY-GH300, new 2007, vertical head: 3 HP w/.0015, .003 and .006" feeds on quill 65–3,580, RPM V-belt step pulley 5-3/4" quill travel, rapid traverse, hard ways, 12" x 51" tbl. w/11/16" T-slots, 460 v., 3-phase, Newall D.R.O., pwr. tbl. elevation, tbl. not milled/drilled, #40 taper on both horiz. and vert. spdls., Showa central oiling, pwr. long./cross feeds, S/N 300314 (No loading charge).

RADIAL ARM DRILL

CINCINNATI BICKFORD 5' X 13" SUPER SERVICE, #4 MT spd., 16.5" quill travel, spds.: 23–1,420 RPM, 1" T-slots in base, 3-phase 220/240 v. or 440/480 v., S/N 3E-654 (No loading charge).

DRILL PRESS

ALLEN COLUMN TYPE, 25" x 33-3/4" tbl. size, 2 HP, 60–2,400 RPM variable spd., 15" throat depth, 5" quill travel.

**WEDNESDAY, SEPTEMBER 28 • 10:00 A.M.
LIVE ONLINE WEBCAST (NO ONSITE BIDDING)**



**GALLMEYER & LIVINGSTON MDL. 283
SURFACE GRINDER**



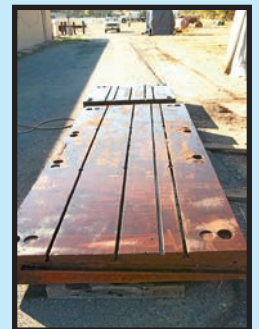
**ROYAL UNIVERSAL HORIZONTAL/
VERTICAL MILLING MACHINE**



**WILSON ENGINEERING
C-FRAME BROACHING PRESS**



**LUCAS 4'W. X 10'H.
BORING MILL ANGLE PLATE**



**FLOOR PLATES – ORIGINALLY
PART OF LARGE CARLTON
HORIZONTAL CNC DRILL**



KONE SECO 10 T. CAP. X 45-1/2' BRIDGE CRANE



FMH MDL. RL-20/16 ROUTE LOADER CONVEYOR

LOCATION 8, CONTINUED

FLOOR PLATES

ORIGINALLY PART OF LARGE CARLTON HORIZ. CNC DRILL, consisting of: 2-pc. plate (can be placed inline w/each other or in an "L" configuration), small portion – 54"W. x 54"L. x 8" thk., large portion – 54"W. x 11'L., 8" thk., 3/4" T-slots on 14" centers, bolt-down holes in corner (No loading charge).

BORING MILL ANGLE PLATE

LUCAS 4'W. X 10'H., 5/8" T-slots, 2-3/4" thk. front plate where work mounts, 4' sq. base.

BRIDGE CRANE

KONE SECO 10 T. CAP. X 45-1/2', 220 v. 3-phase, 90.5" centers on truck axle pins, 45'1/2" center to center of trucks lengthwise, 26' max. working ht., 60 FPM traveling spd. of hoist on beam, 24-3/4" main beam, bridge pendant control, S/N CR3530 (No loading charge).

FORKLEVATOR FORKLIFT MAINTENANCE ELEVATOR

HANDLING SPECIALTY, new 2001, 20,000-lb. work cap., 5 HP motor, 3-phase, S/N 66562-1.

FREE STANDING JIB CRANE

ABELL HOWE 2 T. CAP., hex base is 37" across flats, 6 ea. 1-3/8" holes for mounting on 18" centers, approx. 9' working radius off face of post, 15" dia. column (No loading charge).

ROUTE LOADER CONVEYOR

FMH MDL. RL-20/16, 480 v., 3-phase, 50-lbs. per ft. load rating, can be set from 16'–20' length, 18" belt, variable spd., S/N 1298 (No loading charge).

FORKLIFT

MITSUBISHI 4,000-LB. BASE CAP. MDL. FGC20, 80" lift ht., 2-stage mast, LP pwrd., cushion tires, S/N F82-01373.

SCISSOR LIFT

PRESTO 4,000-LB. CAP. MDL. X4W36-40, 48", 48" x 48" tbl. top, 12" lowered ht., 36" vert. travel, 48" raised ht., twin cylinders, foot pedal control, 1.5 HP motor, 3-5/8"H. and 6-1/2"W. openings, S/N 162963-02 (No loading charge).



DONALDSON MDL. MC6000 MIST COLLECTOR



HANDLING SPECIALTY FORKLEVATOR FORKLIFT MAINTENANCE ELEVATOR

MIST COLLECTOR

DONALDSON MDL. MC6000, 12" inlet, 460 v. 3-phase, 20 HP blower motor, S/N 253357 (No loading charge).

NEW HYDRAULIC MATCHING CYLINDER SET

PENNECON ENERGY HYDRAULIC SYSTEMS MDL. 06-HSL-NF-033, approx. 54" travel, approx. 8" bore, 3,000 PSI operating pressure, 3,000 PSI design pressure, rod and barrel end eyes are 10"W. for 3-1/2" pins eqpd. w/bronze bushings, pin center-to-center dist. approx. 79" w/cylinder retracted (No loading charge).

BALL SCREWS

REMOVED FROM LUCAS 41 BORING MILL, consisting of: (1) 10' of threads, (1) 6' of threads, (1) 6'3" of threads, 2" dia. rods, 2-pitch thread (No loading charge).

FLUID CHILLER

TURMOIL MLD. A.JPG, circulates and cools, sgl. phase, model rated cooling cap., comp. standard pump cap. tank cap. standard voltage (No loading charge).

FOR BIDDING AT THIS AUCTION. Go to www.pmi-auction.com and click on BidSpotter or proxibid on our calendar page for this auction sale.



MITSUBISHI 4,000-LB. BASE CAP. FORKLIFT

**WEDNESDAY,
SEPT. 28
10:00 A.M.
LIVE ONLINE
WEBCAST
(NO ONSITE
BIDDING)**

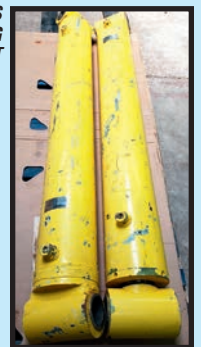


TURMOIL MDL. A.JPG FLUID CHILLER

**PENNECON ENERGY HYDRAULIC SYSTEMS
NEW HYDRAULIC MATCHING
CYLINDER SET**



PRESTO 4,000-LB. CAP. SCISSOR LIFT



LOCATION 9
PRECISION CNC MACHINE SHOP
 8250 W. LITTLE YORK ROAD
 HOUSTON, TEXAS 77040

INSPECTION: By Appointment Only.
 Contact Kim Hoang at (713) 466-1616 for Appointment.



CNC RAM TYPE EDM MACHINE

CHARMILLES ROBOFORM MDL. 55P, new 2003, 19-1/2" x 29-1/2" work tbl., 47" x 30" x 17" drop style work tank, 3R 20mm shank tool system 6-pos. rack style tool changer, S/N 666161 (out of service).

LOCATION 10
ABLE MACHINERY MOVERS
 10835 Bammel North Houston Road
 HOUSTON, TEXAS 77086

INSPECTION: By Appointment Only, September 26 & 27.
 Contact Darren Bowels at (713) 460-2253 for Appointment.

AUTOMATIC INDEXING BLASTING MACHINE

MEC MDL. PB -131313 SPL ALLOY COATING SUPPLY, 39.37" turn tbl. dia. w/ (6) indexing positions, 39.37" x 39.37" door opening cap., 11.81" vertical stroke, Siemens Simatic HMI PLC control, blast media reclamation system w/ hoppers, S/N MEC/25601.



LOCATION 11
THE TOOLING EMPORIUM
 1472 S. FLOYD STREET
 LOUISVILLE, KENTUCKY 40208

INSPECTION: By Appointment Only.
 Contact Kuach Kualkat at (502) 821-6590
 or email: kuachkat@gmail.com

PRECISION MACHINE ACCESSORIES & MORE

BRAND NEW INDEXABLE DRILLS, CAT 40 AND CAT 50 TOOLING, CARBIDE INSERTS, MACHINE TOOL ACCESSORIES AND MUCH MORE.

MULTIPLE LOCATIONS IN TEXAS, KENTUCKY & LOUISIANA



13MM SPECIAL SPADE DRILL HOLDER



ISCAR INDEXABLE DRILL



TAPMATIC TAPPING HEADS



SANDVIK & TECHNICS CAT 50 END MILL HOLDERS



AUCTION

**MULTIPLE LOCATIONS IN TEXAS, KENTUCKY & LOUISIANA
LIVE ONLINE WEBCAST (NO ONSITE BIDDING)**

**FEATURING: CNC & MANUAL MACHINE TOOLS; FABRICATING EQUIPMENT; FORKLIFTS; PRECISION
TOOLING & ACCESSORIES; WIDE SELECTION OF SHOP SUPPORT EQUIPMENT & MUCH MORE!**

**WEDNESDAY, SEPTEMBER 28 • 10:00 A.M.
LIVE ONLINE WEBCAST (NO ONSITE BIDDING)**

**FOR BIDDING AT THIS AUCTION. Go to www.pmi-auction.com and click on
BidSpotter or proxibid on our calendar page for this auction sale.**

**18% BUYER'S REMIUM
WILL APPLY**

INSPECTION:

Varies By Location.
See Inside for Details.

ONLINE REGISTRATION

Register to bid at

BidSpotter or **proxibid**.

1. Use the link to Bidspotter.com or Proxibid.com on PMI's website calendar. www.pmi-auction.com **DO IT NOW!**

2. This auction may require a Cash, or credit card, or debit card, 100% refundable deposit. If by credit or debit card, it can be added through the Bidspotter.com fully secure and PCI compliant registration process and will be assessed a 100% refundable \$3,000 (US Bidder) or a \$10,000 (Foreign Bidder) deposit in order to be approved to bid online with this auction. Cash deposits can be made by wire transfer. **DON'T WAIT.** If you are unsuccessful in the auction, the refund of your credit/debit card deposit will occur shortly after the auction ends. Cash deposits will be expedited as well.

If you need assistance, don't hesitate to call (713) 691-4401.

**ALL BIDS ARE SUBJECT TO AN
18% BUYER'S PREMIUM.**

TERMS AND CONDITIONS OF SALE

An 18% Buyer's Premium will apply for this sale. All bidders must register before bidding. All bidders are required to provide the following information when registering:

(full) Name of Individual; (full) Company name and address; Telephone and fax numbers; Email address.

Banking information will be required when registering. If successful bidder is exempt from applicable sales taxes, then the proper sales tax exemption form(s) for the physical location of the item sold at the auction will be required prior to removing the tax from the buyer's invoice. The exemption form(s) must match the buyer information on the invoice.

If you are bidding on behalf of a company, partnership, sole proprietorship, limited liability partnership or any other person or entity (each, an "Entity"), you represent and that you have authority to (i) act on behalf of the Entity; (ii) bind the Entity to these Bidder Terms; and (iii) bind the Entity to any contract or arrangement entered into as a result of your participation in the Auction. You acknowledge and agree that such Entity will be responsible for your violation of these Bidder Terms. You further agree that where you do not have the authority to act on behalf of the Entity and bind the Entity in accordance with (i) to (iii), above, you will remain personally liable to Plant & Machinery, Inc. for any claims arising from or relating to these Bidder Terms and any agreement you enter into with an online Bidding Service Provider.

This auction may require a credit card 100% refundable deposit. Your credit card added through the Bidspotter.com or Proxibid.com fully secure and PCI compliant registration process will be assessed a 100% refundable \$3000 (US Bidder) or a \$10,000 (Foreign Bidder) deposit in order to be approved to bid online within this auction. If you are unsuccessful in the auction, the hold on your credit card will be released within 24 hours post auction.

AUCTIONEER DOES NOT TAKE CREDIT CARDS OR DEBIT CARDS FOR AUCTION INVOICE PAYMENTS. All invoice payments must be made by Wire Transfer, Cashier's Check, or, Company Check with letter from Bank guaranteeing unqualified payment of your check to Plant & Machinery, Inc. (PMI). Here is an example of what your letter should say:

[Mr. "Individual's Name" representing "Company Name" is a customer of this bank. This bank will guarantee unqualified payment to Plant & Machinery, Inc. on the account listed herein up to the amount of \$_____. This letter is good until (insert expiration date 30 days from sale date).]

All checks for deposits and balances due shall be payable to the order of PLANT & MACHINERY, INC. unless instructed otherwise. In some cases, payments may be taken direct to the auction site. Otherwise, all payments must be paid to the Houston headquarters offices of the Auctioneer at 1304 Langham Creek Drive, Suite 454, Houston, TX, 77084, or, by wire transfer directly to the bank specified in the wire transfer instructions provided for this on-line auction. The full purchase price on all lots sold to the same buyer must be paid within the time fixed and before removal of any of the goods.

NOTE: ALTHOUGH ALL INFORMATION HAS BEEN OBTAINED FROM SOURCES DEEMED RELIABLE, AUCTIONEER AND SELLER MAKE NO WARRANTY OR GUARANTEE EXPRESSED OR IMPLIED, AS TO THE ACCURACY OF THE INFORMATION CONTAINED IN OUR ADVERTISING OR SALE CATALOG. THE AUCTIONEER AND SELLER SHALL NOT BE RESPONSIBLE FOR THE CORRECT DESCRIPTION, GENUINENESS, AUTHENTICITY OF, OR DEFECT IN ANY LOT, AND MAKES NO WARRANTY IN CONNECTION THEREWITH. BIDDER, OR THEIR REPRESENTATIVE, AGREE TO PHYSICALLY INSPECT THE LOT(S) AND MAKE THEIR OWN VERIFICATION OF THE CONTENTS.

NOTE: NO SALE SHALL BE SET ASIDE NOR ALLOWANCE MADE ON ACCOUNT OF ANY INCORRECTNESS, ERROR IN CATALOGING, OR ANY IMPERFECTION NOT NOTED. NO DEDUCTION WILL BE ALLOWED ON DAMAGED ARTICLES, ALL ARTICLES BEING EXPOSED FOR PUBLIC EXHIBITION, AND SOLD "AS IS" AND WITHOUT RECOURSE. ARTICLES ARE NOT WARRANTED AS MERCHANTABLE OR FIT FOR ANY PARTICULAR PURPOSE, AND NO CLAIM MAY BE MADE BY PURCHASER RELATING TO THE CONDITION OR USE OF ARTICLES PURCHASED, OR FOR PROXIMATE OR CONSEQUENTIAL DAMAGES ARISING THEREFROM.

The Auctioneer is acting as agent only and is not responsible for the acts of its principals. Purchaser acknowledges, as an inducement to Seller to commit Purchaser to bid, that Purchaser has independently inspected the goods bid upon by the Purchaser, and acknowledges to the Seller that Purchaser is acquiring all goods "AS IS, WITH ALL FAULTS" and "WITH REMOVAL AT PURCHASERS' RISK AND EXPENSE" and agrees to protect, indemnify and hold harmless the Seller from any and all claims, demands, causes of actions, liabilities and judgments relating to the conditions or use of the goods.

All bids must be paid in full within two business days after the bids have closed. The Auctioneer shall determine the bidding increments. Some items may be auctioned with reserve

All purchases must be removed within two weeks after the bids have closed, or, within the timeframe posted on the sale web page or contained in the confirmation email sent to successful bidder. No lot can, on any account, be removed prior to PMI having been paid in full. Removal shall be at the expense, risk and liability of the Purchaser. Purchases will be released only on evidence of invoice bill. Auctioneer shall not be responsible for goods not removed within the aforesaid time.

Riggers, movers, electricians or buyer performing work at the Auction Site(s) must provide Auctioneer with evidence of insurance. The insurance coverage must be at a level acceptable to Auctioneer and to the Seller. Auctioneer and Seller must be added as additional insured on the Certificate of Insurance.

Articles purchased may not incorporate approved activating mechanisms, operating safety devices or safety guards, as required by OSHA or otherwise. It is Purchaser's responsibility that articles purchased be so equipped and safeguarded to meet OSHA and any other requirements before placing such articles into operation.

Purchaser agrees to indemnify and hold Auctioneer harmless from and against all claims and liabilities relating to the condition or use of the articles purchased or failure of user to follow instructions, warnings or recommendations of the manufacturer, or to comply with federal, state and local laws applicable to such articles, including OSHA requirements, or for proximate or consequential damages, costs or legal expenses arising therefrom.

No claims will be allowed after removal of goods from premises.

Auctioneer shall not, in any event, be liable for non-delivery or any other matter or thing, to any Purchaser of any lot other than for the return to the Purchaser of the deposit or sum paid on said lot, should the Purchaser be entitled thereto.

In default of payment of bills in full within the time therein specified, the Auctioneer in addition to all other remedies allowed by law, may retain all monies received as deposit or otherwise, as liquidated damages. Lots not paid for and removed within the time allowed herein may be resold at public or private sale without further notice, and any deficiency, together with all expenses and charges of re-sale, will be charged to the defaulting Purchaser.

Persons attending during exhibition, sale or removal of goods assume all risks of damage of or loss to person and property and specifically release the Auctioneer from liability therefor. Neither the Auctioneer nor his principal shall be liable by reason of defect in or condition of the premises on which the sale is held.

The Auctioneer reserves the right to withdraw from sale any of the property listed or to sell at this sale property not listed, and also reserves the right to group one or more lots into one or more selling lots or to subdivide into two or more selling lots. Whenever the best interest of a Seller will be served, the Auctioneer reserves the right to sell all the property listed, in bulk. Some items may be auctioned with reserve. Auctioneer reserves the right to accept bids from the Seller. This auction may contain consignments. The Auctioneer reserves the right to alter the order of sale. All bids are visible to the auctioneer. Auctioneer is not responsible for internet lags, delay, blackouts, or disconnects. Auctioneer shall determine the bidding increments used in this auction.

Where items are sold by estimated weight, count or measure, the Purchaser will be billed for and required to pay for the estimated weight, count or measure. If, upon delivery, any shortage exists, the Purchaser will receive a refund at the rate of purchase. If there be an excess, the Purchaser will be required to pay for such excess, at the rate of purchase.

The record of sale kept by the Auctioneer will be taken as final in the event of any dispute.

Seller, if not the same as the Auctioneer, shall have the rights, protections and benefits afforded to the Auctioneer as set forth herein.

Although it is not likely, auction sales are subject to cancellation or postponement. Kindly contact Auctioneer in advance of your travel to verify the current details about this auction.

ANY ADDITIONAL PROVISIONS OR AMENDMENTS TO THE ABOVE LISTED TERMS WILL BE POSTED TO THE ON-LINE SALE WEB PAGE BY THE AUCTIONEER PRIOR TO THE START OF BIDDING.