



COMBINATION AUCTION & ORDERLY LIQUIDATION

MAJOR FULL-SERVICE STEEL FOUNDRY CLOSING

PART 1: AUCTION OF THE MACHINE SHOP & SELECT PLANT SUPPORT

PART 2: ONGOING ORDERLY LIQUIDATION SALE OF FOUNDRY EQUIPMENT

THURS., FEB. 22 • 10:00 A.M. CST
LIVE ONLINE WEBCAST (NO ONSITE BIDDING)

INSPECTION: Tuesday & Wednesday, February 20 & 21,
9:00 A.M. to 4:00 P.M. & Morning of Sale

**PART 1: SIVYER
STEEL CASTINGS, LLC**

**225 33RD STREET,
BETTENDORF, IOWA 52722**

BUYER'S PREMIUM: 18%



144" RAFAMET VERTICAL TURRET LATHE



ATLAS MDL. 300MH EXCAVATOR



CATERPILLAR CD125-K366 DIESEL
BACKUP GENERATOR SET



NDI OPTOTRAK PRO SERIES 2000
WIDE AREA C.M.M.

2008

FOR BIDDING AT THIS AUCTION. Go to www.pmi-auction.com and click on the calendar page for link to online bidding platforms for this auction.

PART 2: ONGOING ORDERLY LIQUIDATION SALE OF FOUNDRY EQUIP.



BEAVERMATIC 12'W. X
12'L. X 8'H. GAS FIRED
CAR BOTTOM FURNACE

GENERAL KINEMATICS
18' X 14' SHAKEOUT
DECK

Read Partial
Terms and
Conditions on
Back Page of
Brochure



UNUSED



LECO ELEMENTAL ANALYZER

**2
AVAILABLE**

Sale
Conducted
By:

PLANT & MACHINERY INC.

AUCTIONEERS • APPRAISERS • LIQUIDATORS • REAL ESTATE

1304 Langham Creek Drive, Suite 454, Houston, Texas 77084

PHONE: (713) 691-4401

FAX: (713) 672-7905

E-MAIL: pmi@pmi-auction.com
WEBSITE: www.pmi-auction.com

In Conjunction With:

**Federal
Equipment
Company**

PART 1: LIVE WEBCAST AUCTION
MACHINE SHOP, CMM, MATERIAL HANDLING EQUIPMENT,
SHOP SUPPORT EQUIPMENT & MORE!

THURSDAY, FEBRUARY 22
10:00 A.M. CST
LIVE ONLINE WEBCAST (NO ONSITE BIDDING)



**144"
 RAFAMET
 VERTICAL
 TURRET
 LATHE**



**74"
 BULLARD
 CUTMASTER
 VERTICAL
 TURRET
 LATHE**

VERTICAL TURRET LATHES

144" RAFAMET, (2) Ram heads, (1) side head, (2) Newall D.R.O., (4) heavy duty boring mill type jaws, pendent control, pwr. feed, 144" under rail, 75 HP, Scanamatic 2-axis tracer on left Ram.

74" BULLARD CUTMASTER VTL, (2) Ram heads, (1) side head, (4) boring mill type jaws, tracer attachment, Newall D.R.O., S/N 28841.

74" BULLARD CUTMASTER VTL, (2) Ram heads, Newall D.R.O., (4) boring mill type jaws, S/N N.A.

54" BULLARD CUTMASTER VTL, (1) Ram head, (1) turret head, (1) side head, (2) Newall D.R.O., S/N N.A.

54" BULLARD CUTMASTER VTL, (1) turret head, (1) side head, 4-jaw chuck w/built-in master jaws, S/N 25133.

42" BULLARD CUTMASTER VTL, 3-jaw chuck, turret head (off of machine along w/the saddle), side head.

36" BULLARD CUTMASTER VTL, 3-jaw chuck, (1) turret head, (1) side head, S/N 28547.

36" BULLARD CUTMASTER VTL, 3-jaw chuck, turret head, side head, Newall D.R.O., S/N 28540.

ENGINE LATHES

21-1/2" X 120" CINCINNATI, 21-1/2" X 120" btwn. centers, 18" 4-jaw chuck, steadyrest, tool post, S/N 1W515P-17.

12" X 36" CLAUSING MDL. NA, 3-jaw chuck, S/N 502902.

VERTICAL TURRET MILLS

9" X 36" BRIDGEPORT, longitudinal pwr. feed, variable spd. head, S/N 163090.

9" X 46" INDEX MILL, step pulley head, pwr. feed.

RADIAL ARM DRILL

5' X 13" MORRIS MDL. MORE-SPEED.

DRILL PRESS

21" CINCINNATI BICKFORD SUPER SERVICE.

PLANER MILL

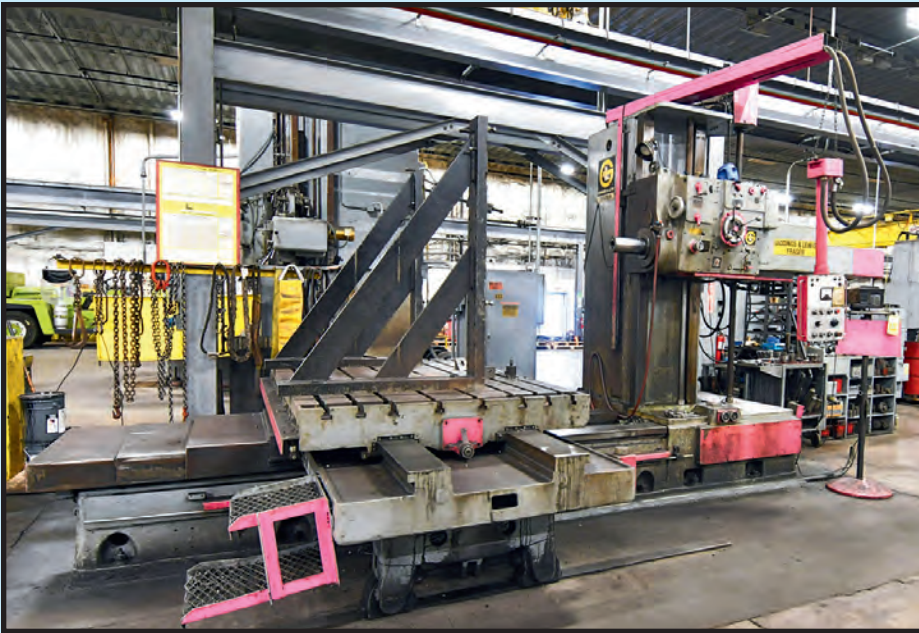
GRAY HANDYMILL, vertical head, (2) horizontal heads (one is disassembled and incomplete), 145"L. x 36"W. tbl. size, 36" under the rail max. ht.



CINCINNATI 21-1/2" X 120" ENGINE LATHE



GRAY HANDYMILL PLANER MILL



5" GIDDINGS & LEWIS FRASER MDL. 70A-DPS-T HORIZONTAL BORING MILL



MITTS AND MERRILL MDL. 6HYDKSNO.6HYDKS HYDRAULIC KEYSEATER

GLOBAL AUCTION

HORIZONTAL BORING MILLS

5" GIDDINGS & LEWIS FRASER MDL. 70A-DPS-T, 98" x 60" tbl. size, Newall D.R.O., S/N 150-886-383.

LUCAS MDL. 42B-84, 86" x 40" tbl. size, D.R.O., pendent control, S/N N.A.

LUCAS MDL. 42B-84, 86" x 56" tbl. size, S/N 426-3709.

EDM MACHINE

ELOX MDL. HRPDC201, w/extra control, S/N 145.

HYDRAULIC KEYSEATER

MITTS AND MERRILL MDL. 6HYDKSNO.6HYDKS, 3-1/2" x 30" cap., S/N H10167.

CONTOURING VERTICAL BANDSAW

DOALL MDL. 16-2, 16" throat depth, tilting tbl., S/N 45-53124.

HORIZONTAL BANDSAW

DOALL MDL. C-916, 9" x 16" rectangular cap.

WIDE AREA COORDINATE MEASURING MACHINE

NDI OPTOTRAK PRO SERIES 2000 ON A VINTEN TRIPOD, new 2008, S/N C-06410.

ROTARY TABLES

52" FARMINGTON MDL. 4200, air bearing, tilt base, 52" cap.; ENCO, approx. 32" dia.; CUSTOM, approx. 36" dia.; CUSTOM, tbl. approx. 60" x 48"; CUSTOM, tbl. approx. 60" x 36".

SMOKE EATER

VENTBOSS SERIES 100 MDL. VB-800-1, S/N 24310.

INSPECTION: Tues. & Wed., Feb. 20 & 21, 9:00 A.M. to 4:00 P.M. & Morning of Sale



LUCAS MDL. 42B-84 HORIZONTAL BORING MILL

ROTARY SCREW AIR COMPRESSORS & DRYER

SULLAIR MDL. 10-30, 30 HP; QUINCY MDL. 01AJACA31H, 50 HP, S/N 73264; PNEUMATECH REFRIGERATED AIR DRYER.

DON'T MISS THIS SALE!



NDI OPTOTRAK PRO SERIES 2000 WIDE AREA C.M.M.



SAMPLE VIEW OF ROTARY TABLES



CATERPILLAR CD125-K366 DIESEL BACKUP GENERATOR SET

THURSDAY, FEBRUARY 22
10:00 A.M. CST
LIVE ONLINE WEBCAST (NO ONSITE BIDDING)



AUCTION

EXCAVATOR

ATLAS MDL. 300MH, wheeled w/Walker 45" dia. magnet type 4505H, 2,000-lb. cap., outriggers, dual solid tires on front and rear, S/N 44334, magnet Mdl. 6130960, S/N 14D53.

FORKLIFTS

TOYOTA 15,000-LB. BASE CAP. MDL. 7FGCU70, 3-stage mast, LPG pwr., 13,550-lb. cap. as equipped, 187" lift ht., side shift, fork positioners, S/N 70121.

CLARK 15,000-LB. BASE CAP. MDL. CGC70L, 3-stage mast, LPG pwr., 189" lift ht., cushion tires, S/N CGC470L0214-9861CNF. **(Note* this forklift appears to have been near the foundry fire. Needs repair).**

CLARK 11,000-LB. CAP. @ 48" L.C. MDL. CY160, 2-stage mast, LPG pwr., fork positioning, dual front tires, counterweights, S/N CY160B-30-751866.

HYSTER 10,000-LB. BASE CAP. MDL. H110XL, diesel, 3-stage mast, 197" lift ht., tandem front tires, side shift, solid tires, 60" forks, 5,861 H.O.M. S/N F005D05878N. **(Out of service).**

CLARK APPROX. 10,000-LB. BASE CAP., diesel, 2-stage mast, side shift, solid tires, 72" forks, S/N N.A. **(Out of service, needs turbo).**

MITSUBISHI 8,000-LB. BASE CAP. MDL. FGC40K, 3-stage mast, LPG pwr., 7,400-lb. cap. as equipped, 201" lift ht., cushion tires, side shift, S/N AF87A00062.

YALE 6,000-LB. BASE CAP. MDL. GLP060MXNVRE087, 3-stage mast, LPG pwr., 5,500-lb. cap. as equipped, 182" lift ht., side shift, cushion tires, S/N B875V03443H.

YALE 6,000-LB. BASE CAP. MDL. GLP060VXEVS093, 3-stage mast, LPG pwr., 5,300-lb. cap. as equipped, 199.6" load ht., cushion tires, side shift, S/N B875B16673F.

MITSUBISHI 6,000-LB. BASE CAP. MDL. FGC30, 3-stage mast, LPG pwr., 187" lift ht., side shift, solid tires, S/N AF83B-0664.

HYSTER 5,000-LB. BASE CAP. MDL. H50FT, 3-stage mast, LPG pwr., 4,500-lb. cap. as equipped, 189" lift ht., side shift, cushion tires, S/N L177B24187F.

CATERPILLAR APPROX. 5,000-LB. BASE CAP. MDL. VC60C, 2-stage mast, LPG pwr., solid tires, 3,343 H.O.M., 60" forks, S/N N.A.

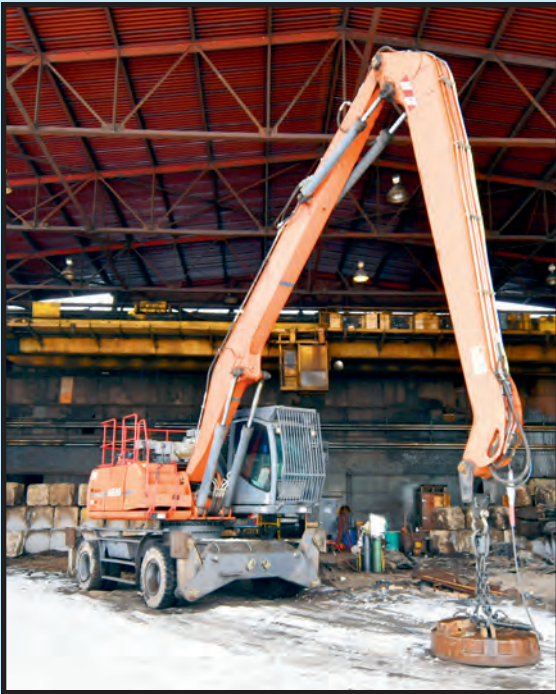
CATERPILLAR MDL. T50D, 2-stage mast, LPG pwr., 173" lift ht., side shift, cushion tires, 48" forks, S/N 8EB378. **(Out of service).**

TELEHANDLER, CRANE, SKID STEER LOADER & MORE!

TEREX TELEHANDLER MDL. TX55-19, solid tires, diesel engine; **CASE 430 SERIES SKID STEER**, diesel engine; **BRODERSON CARRY DECK CRANE MDL. IC80-2E**, LPG pwr., 3,814 H.O.M., S/N 289061; **TENNANT SWEEPER MDL. 800**, LPG pwr., S/N 800-7460; **FLOOR MOUNTED JIB CRANE; MORE!**

MANLIFTS

JLG BOOM LIFT MDL. 600AJ, 60' boom cap., diesel; **GENIE MDL. GS-2636 SCISSOR LIFT; SKYJACK SCISSOR LIFT**, 800-lb. platform cap., fully extended is 500-lb. platform cap.; **MORE!**



ATLAS MDL. 300MH EXCAVATOR



FLOOR MOUNTED
JIB CRANE

**DON'T
MISS
THIS SALE!**



TOYOTA
15,000-LB.
BASE CAP.
FORKLIFT



CLARK
11,000-LB.
CAP.
FORKLIFT

PART 1: LIVE WEBCAST AUCTION

MACHINE SHOP, CMM, MATERIAL HANDLING EQUIPMENT, SHOP SUPPORT EQUIPMENT & MORE!



CASE 430 SERIES SKID STEER



TEREX MDL. TX55-19 TELEHANDLER



SKYJACK SCISSOR LIFT



BRODERSON MDL. IC80-2E CARRY DECK CRANE



JLG MDL. 600AJ BOOM LIFT

WELDING & ARC GOUGING MACHINES

APPROX. (7) LINCOLN IDEALARC DC 1000 AS NEW AS 2020; (3) MILLER DIMENSION 1000; MILLER SYNCROWAVE 350LX; LINCOLN POWERWAVE 455 M, new 2010, w/pwr. feed 10M wire feeder, S/N U1100906898; WELDING BOOM W/ MILLER DELTAWELD 651 AND DUAL HEAD 70 SERIES MILLER WIRE FEEDER, S/N KB125788; MILLER GOLDSTAR 652, S/N KG038751; MILLER MDL. SRH-555; LINCOLN MDL. SP-125 PLUS MIG WELDER, S/N U1971203770; WIDE SELECTION OF LINCOLN LN10 AND DH10 WIRE FEEDERS, as new as 2014; (3) ARC GOUGING UNITS AFTEK-EHS MDL. MV2400G2, 2,400 amp cap., as new as 2023; WIDE SELECTION OF ARC GOUGING RODS ARCAIR MDL. JET RODS CATSKILL, 1,600-2,200 amp cap., 1" x 17"; CONTROLS FOR ARC GOUGING MACHINES; LINCOLN ARC TRACKER; PHOENIX ROD OVEN MDL. 90, type 900, 100-550 temp. range; MORE!

STRETCH WRAPPING MACHINE

LANTECH Q SERIES MDL. Q300, approx. 60" rotary tbl., S/N QM011527.

CRYOPRESERVATION EQUIPMENT

CRYOSAFE CRYOGENIC PART NO. SSBA-2, S/N 555001P49804.

SHOP SUPPORT EQUIPMENT

CATERPILLAR CD 125-K366 DIESEL BACKUP GENERATOR; GREENLEE CONDUIT BENDER, unused; DOUBLE END GRINDERS; BELT AND DISC GRINDERS; ENERPAC HYDRAULIC POWER PACKS; RIDGID PIPE THREADER STAND; ROTARY JACK HAMMER; POWER TOOLS; PORTA BANDSAW; SCROLL SAW; OTC SHOP PRESS; SEARS CRAFTSMAN DRILL PRESS; WIDE SELECTION OF ROLLER DRAWER CABINETS AND PIGEONHOLE HARDWARE CABINETS; HEAVY DUTY C-CLAMPS; AIR GRINDERS; MAGNETIC LIFTERS; ANGLE GRINDERS; MORE!

QC EQUIPMENT

GRANITE SURFACE PLATE, 60" x 72" x 15" thick (for reference only); ASSORT. OF OD MICS; HEIGHT GAGES; VERNIER CALIPERS; MORE!

PRECISION MACHINE ACCESSORIES

LARGE QTY. OF: MACHINE VISES; CHUCKS; ROTARY INDEXERS; ROTARY TBLs.; ANGLE PLATES; TOOLING; SET-UP TOOLING; CARBIDE TOOLING; INSERTS; MUCH MORE. SEE CATALOG FOR DETAILS.



TENNANT MDL. 800 SWEEPER



GREENLEE CONDUIT BENDER



ARC GOUGING UNIT



LANTECH Q SERIES MDL. Q300 STRETCH WRAPPING MACHINE



(1 OF 7) LINCOLN IDEALARC DC 1000 WELDERS

UNUSED

NEW AS 2020

**PART 2: ONGOING ORDERLY LIQUIDATION
SALE OF SIVYER STEEL CASTINGS
FOUNDRY TYPE MACHINES & SUPPORT**

Ongoing Orderly Liquidation Sale of Foundry Items Located at

SIVYER STEEL CASTINGS, LLC
225 33RD STREET, BETTENDORF, IOWA 52722

Items on Page 6 & 7 are immediately available for sale by private negotiation on a first come-first served-basis. Contact Robert Brundage at (713) 691-4401 for pricing and availability.

2011



KLOSTER VERSA-MULL 1,000-LBS./MIN ARTICULATED SAND MIXER

2010



GUDGEON THERMIFIRE TF8000 THERMAL SAND RECLAIMER

UNUSED



GENERAL KINEMATICS 18' X 14' SHAKEOUT DECK

2010



GENERAL KINEMATICS VIBRAMILL LUMP BREAKER

1 OF 2

MOLDING SYSTEMS

KLOSTER VERSA-MULL TYPE III DOUBLE ARTICULATED MIXER, 2,000-lb. per minute cap., operator's pulpit w/ joystick controls, pwr. rotation primary and both secondary arms, 8'-6" discharge ht., 14' primary arm reach, 5' secondary arm reach, 24'-3" max. reach, 50 HP, Alfaset resin system, Kloster 60 TPM sand heater/cooler/classifier, (2) large rectangular compaction tbls., S/N 8097-VM3-2000, system installed 2009.

TINKER OMEGA ARTICULATED MIXER MDL. TOM1200, 1200-lb. per minute cap., Next Gen 2 PLC controls, pwr. primary and secondary arm rotation, Alfaset resin system, feed hopper, pneumatic transporter, (2) Kloster 45 TPH sand heater/cooler/classifiers, vibratory compaction tbl., H. D. roller conveyor molding line, 90 deg. turn unit, Kloster boiler and dust collector, system installed 2010.

KLOSTER VERSA-MULL TYPE II ARTICULATED MIXER, 1,000-lb. per minute cap., pwr. primary arm rotation, 7'-3" discharge ht., 11'-8" primary arm reach, 15'-8" total reach, Alfaset resin system, feed hopper, Palmer additive system, Kloster 60 TPH sand heater/cooler/classifier, S/N MS-7428-VN2-1000, installed 2011.

KLOSTER TILT-FRAME 2-STATION MOLD SPRAY COATING SYSTEM, large cap., w/(2) coating pump/reservoir systems, catch pan, hyd. system.

OVER 1,000 STEEL FLASKS, from 24" x 27" up to 140" x 140" dimensions, and hts. from 12" to 48", round, square and rectangular shapes.

(2) QUIPTEC FLASKLESS MOLD MANIPULATORS, 10,000-lb. cap. unit Mdl. OSR10K-06, S/N 453995, 6,000-lb. cap. unit Mdl. OSR6K-06, S/N 45-3601.

SAND SYSTEMS & SUPPORT EQUIPMENT

GENERAL KINEMATICS 18' X 14' SHAKEOUT DECK, new 2013, never installed, two-mass design, approx. 60 T. cap.; **GUDGEON THERMIFIRE THERMAL RECLAIMER MDL. TF8000**, new 2010, Allen Bradley PLC controls, 96 tons per day/480 tons per week thruput, 5 x 1.5 million BTU Kinemax burners, Castec Cel-300 feeder, S/N 1176; **GUDGEON THERMIFIRE SAND HEATER/COOLER/CLASSIFIER MDL. RES-A026**, new 2010, S/N 1179.

PLUS: (2) GENERAL KINEMATICS VIBRA-MILL LUMP BREAKERS, programmable controller, S/N C10495-02, S/N N.A.; **SEVERAL MACAWBER AND WHIRL-AIR FLOW SAND TRANSPORTERS W/ALLEN BRADLEY PROGRAMMABLE CONTROLLER**; **(3) LARGE MODULAR CONSTRUCTION SAND BINS**; **ERIEZ ELECTROMAGNET MDL. MC2SE7330**, 33.1 amp, 115 v., S/N 291022; **(2) HI-VAC ELECTRIC POWERED SAND VACUUM SYSTEMS**, one unit rebuilt 2022, w/dump hoppers and hoses.

MELT SHOP

(3) WHITING 9' DIAMETER HYDRO-ARC MELTING FURNACES, approx. 8 T. cap., hyd. tilt drive, Pennsylvania 4,000 KVA type OW transformer, 13,200 v. primary, recently retrofitted w/Tenova Mdl. LPV4043 servo electrode control system, auto. tap changer, auto. vacuum breaker, Nidec variable frequency drives, several new copper lead sets, several spare furnace roofs, quantity of new electrodes, ductwork and fume/dust collector system. **PLUS: (2) GAS FIRED LADLE PRE-HEAT SYSTEMS; (2) 10 T. CAP. LADLE HANDLERS; (8) 10 T. CAP. BOTTOM POUR LADLES; (2) BOTTOM-DROP CLAM SHELL SCRAP BUCKETS; LARGE QTY. SLAG POTS; WALKER 54" CRANE MAGNET; (3) CARDOX FIRE SUPPRESSION SYSTEMS.**

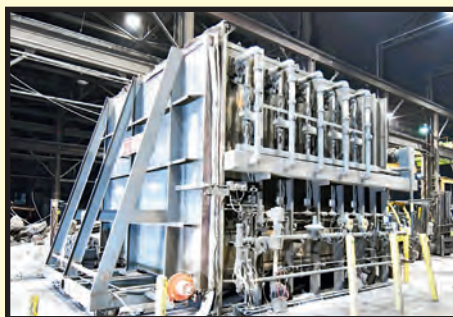
CAR-BOTTOM HEAT TREAT FURNACES

BEAVERMATIC CAR-BOTTOM FURNACE MDL. 12X8X12DGCBF, new 2012, 12'W. x 12'L. x 8'H. interior dimensions, 72,000-lb. car weight cap., 1,850 deg. max. temp. 350 deg. min. temp., ceramic wool lining, pwr. car, Maxon Mdl. 300SMA11-A11-B21A0 shut-off valves, Dungs combustion controls, (10) total burners, S/N 1011-175/8.

BEAVERMATIC CAR-BOTTOM FURNACE MDL. 7X14X7DGCBF, 7'W. x 14'L. x 7'H. interior dimensions, 30,000-lb. car weight cap., 1,850 deg. max. temp. 500 deg. min. temp., ceramic wool lining, pwr. car, (this furnace is currently needing a relining) S/N 40153/8.



TINKER OMEGA 1,200-LB./MIN. SAND MIXER AND MOULDING LOOP



BEAVERMATIC 12'W. X 12'L. X 8'H. GAS FIRED CAR BOTTOM FURNACE



WHITING ELECTRIC ARC FURNACE



DAKE HYDRAULIC STRAIGHTENING PRESS



WHEELABRATOR 63" X 96" TUMBLAST SHOTBLASTING SYSTEM



JOHN DEERE ARTICULATED MDL. 444J HIGH LIFT FRONT END LOADER



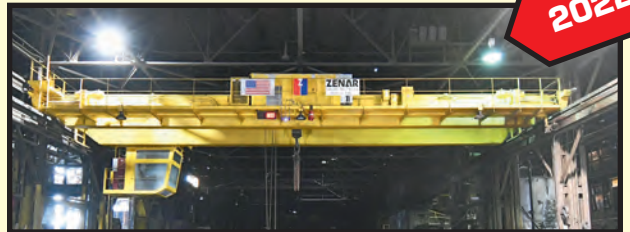
HI-VAC FOUNDRY SAND VACUUM SYSTEM

REBUILT

1 OF 2



WHEELABRATOR 72" ROTARY TABLE SHOTBLASTING SYSTEM



ZENAR 63' SPAN 20/10 T. CLASS E HOT METAL CRANE

2022



APPLIED RESEARCH SPECTROMETER

JUST ADDED TO THE ORDERLY LIQUIDATION

37" HERR VOSS TENSION LEVELLING LINE. STORED IN OHIO.

CONTACT OUR HOUSTON OFFICE FOR MORE DETAILS. PHOTOS, VIDEO AND SPECIFICATIONS WILL BE AVAILABLE SOON.



2 AVAILABLE

LECO ELEMENTAL ANALYZER

QUIPTEC FLASKLESS MOLD MANIPULATOR



CLEANING & STRAIGHTENING ROOM

WHEELABRATOR SUPER 70 "TUMBLAST" SHOT-BLASTING MACHINE, 63" x 96" opening size, skip loader unit, 50 HP direct drive 24" dia. wheel, Wheelabrator shaker style dust collector, S/N A56540.

WHEELABRATOR TABLE BLAST MACHINE, 72" dia. extra heavy cap. tbl., manganese steel lining, recirculating shot system, 50 HP direct drive shot wheel, 500-lb. shot hopper w/air feed system, Torit cartridge style dust collector, S/N N.A.

FREE STANDING BLAST ROOM, approx. 15'W. x 20'D. x 15'H., H.D. rail car, winch system, unitized panel construction, recirculating media system, dust collection system, Axiom 10 cu. ft. blast pot w/shot filtration system, new 2019.

DAKE 300 T. CAP. HYDRAULIC STRAIGHTENING PRESS.

FRONT END LOADER

JOHN DEERE ARTICULATED MDL. 444J HIGH LIFT, S/N DW444JH612883.

OVERHEAD BRIDGE CRANES

ZENAR 20/10 T. TOP RUNNING DOUBLE GIRDER HOT METAL CRANE, new 2022, Class E rated, cab/radio controls, 20 T. cap. main hoist, 10 T. cap. aux. hoist, 63'-2-1/4" span, 30' lift ht., digital crane scale w/read-out, full-length service platform, S/N 8914 (new cost, \$732,000.00).

ZENAR 20 T. TOP RUNNING DOUBLE GIRDER HOT METAL CRANE, new 2014, Class E rated, cab/radio controls, 20 T. cap. main hoist, 63'-2-1/4" span, 30' lift ht., full-length service platform, S/N 8565.

ZENAR 15 T. TOP RUNNING DOUBLE GIRDER CRANE, 55' approx. span, cab/radio controlled form, S/N 4880.

Contact Robert Brundage at (713) 691-4401 for pricing and availability.

ELECTRICAL SWITCHGEAR

HUGE ASSORTMENT OF TRANSFORMERS, CIRCUIT BREAKERS, MOTOR CONTROL CENTERS, AND RELATED ELECTRICAL GEAR SERVING UP TO 13,200 V. POWER SYSTEMS. All electrical systems w/this facility are for sale. A single line electrical diagram is available upon request.

AIR COMPRESSOR SYSTEMS

(3) SULLAIR 200 HP WATER COOLED ROTARY SCREW AIR COMPRESSORS (two units recently rebuilt); ATLAS COPCO MDL. FD-1750 REFRIGERATED AIR DRYER, new 2019, 1,750 CFM cap.

MAGNETIC PARTICLE INSPECTION

MAGNAFLUX MDL. CSV-20, 20,000 max. output amps FWDC, remote control stand, 5 gal. spray pot w/agitator, spray head, (2) 24" x 48" copper plate material stands, S/N 623432-01; SEVERAL MORE MAGNAFLUX MAGNETIC PARTICLE INSPECTION MACHINES AVAILABLE.

METALLURGICAL LAB

LECO MDL. ONH836 ELEMENTAL ANALYZER, pwr. purification system, vacuum, LECO TCH600 ELEMENTAL ANALYZER, APPLIED RESEARCH SPECTROMETER MDL. 3460, 9-elements, S/N 2144; WATGATE TECHNOLOGIES STRUCTURIX NDT-U X-RAY FILM DEVELOPER (new 2022); TINIUS OLSON TENSILE TESTER, hyd. drive, computer read-out; TINIUS OLSON MDL. 84 CHARPY IMPACT TESTER; AMATEK STEEL TESTING MACHINES INC. BRINELL TESTING MACHINE; WILSON ROCKWELL HARDNESS TESTER MDL. 5JRBB, S/N 1510; HITACHI-SEIKI TSL15 CNC LATHE, Siesco 21L CNC control, 6" 3-jaw chuck; INDEX VERTICAL TURRET MILL; THERMOLINE OVEN; HEAVY DUTY ELECTRIC FURNACE, 1,850 deg.; HEAVY DUTY FURNACE MDL. HD10187, 2,000 deg. F, S/N 81212; BAILEIGH ENGINE LATHE MDL. PL1236DRO; ABELL HOWE 1/2 T. CAP. JIB CRANE, HYD-MECH MITERING HORIZ. BANDSAW MDL. S20, S/N 20195057; KALAMAZOO 6" BELT SANDER; CARBORUNDUM ABRASIVE CUT-OFF SAW.

PATTERN SHOP

COMPLETE PATTERN SHOP INCLUDING: DELTA ROCKWELL VERTICAL BANDSAW; WALKER TURNER RADIAL DRILL; RIDGID COMPOUND MITER SAW; STENCIL MACHINES; WALKER TURNER VERTICAL BANDSAW; SPINDLE SANDERS; DELTA TABLE SAW; JOINTER; 14" DELTA PLANER; BEVER VERTICAL TURRET MILL; SCROLL SAW; TILT FRAME VERTICAL BANDSAW, MARVEL NO. 8MK1, S/N 82174.

COOLING CIRCUIT EQUIPMENT

EVAPCO COOLING TOWER MDL. AT19-2H8, qty. of (4) 7-1/2 HP vertical pumps, butterfly valves, S/N 21P118711; EVAPCO COOLING TOWER MDL. AT-243, 2,400 gal. per minute; TRANE 300 T. CHILLER SYSTEM.

PLANT & MACHINERY INC.

AUCTIONEERS • APPRAISERS • LIQUIDATORS • REAL ESTATE

P.O. Box 218568
Houston, TX 77218-8568

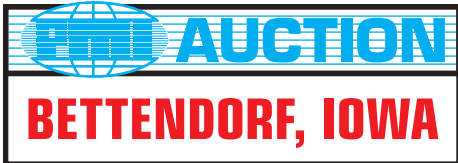
DATED MATERIAL - PLEASE DELIVER

MAJOR FULL-SERVICE STEEL FOUNDRY CLOSING



ZENAR 63' SPAN 20/10 T. CLASS E
HOT METAL CRANE

2022



**PART 1: THURS., FEB. 22 • 10:00 A.M. CST
LIVE WEBCAST ONLY (NO ONSITE BIDDING)**

**PART 2:
LIQUIDATION SALE**



**ATTENTION: PLANT MANAGER
OR EQUIPMENT BUYER**

Presorted
First Class Mail
U.S. Postage
PAID
Eugene, Oregon
Permit No. 17



CLARK 11,000-LB. CAP. FORKLIFT



GRAY
HANDYMILL
PLANER MILL

(1 OF 7)
LINCOLN
IDEALARC
DC 1000
WELDERS



NEW AS
2020



JOHN DEERE ARTICULATED MDL. 444J HIGH
LIFT FRONT END LOADER

AUCTION PARTIAL TERMS & CONDITIONS: An 18% Buyer's Premium will apply to auction items.

Everything will be sold to the highest bidder or bidders for cash in accordance with the auctioneer's Customary Terms of Sale, copies of which will be posted on our website.

ALL PAYMENTS MUST BE MADE BY CASHIER'S CHECK, WIRE TRANSFER OR COMPANY CHECK WITH BANK LETTER GUARANTEEING PAYMENT TO PLANT & MACHINERY INC.

Here is an example of what your letter should be: Mr. "Customer Name" is a customer of this bank. This bank will guarantee unqualified payment to PMI on the account listed herein up to the amount of \$_____. This letter is good until March 22, 2024.

In default of payment of bills in full within the time therein specified, the Auctioneer in addition to all other remedies allowed by law, may retain all monies received as deposit or otherwise, as liquidated damages. All items must be removed by the time announced at the start of the sale.

Lots not paid for and/or removed within the time allowed may be resold at public or private sale without further notice, and any deficiency, together with all expenses and charge of resale, will be charged to the defaulting purchaser.

The buyer acknowledges that he or an agent has inspected all of the assets upon which he will be bidding and/or does purchase.

Buyer agrees to accept assets purchased "AS IS," WITH "ALL FAULTS"

AND "WITH REMOVAL AT BUYER'S RISK AND EXPENSE." THE AUCTIONEER EXPRESSLY DISCLAIMS ON THE PART OF THE AUCTIONEER AS AGENT AND THE SELLER, ANY WARRANTY AS TO FITNESS OR USABILITY OF ALL THE ASSETS, AND THE BUYER EXPRESSLY WAIVES ANY CLAIM IN RESPECT TO ANY POSSIBLE FUTURE USE OF ANY ASSET PURCHASED FOR ANY PURPOSE WHATSOEVER.

The buyer does hereby assume and does agree to indemnify and hold the auctioneer harmless from any future claim which shall pertain to the fitness or use of that asset as being purchased. Riggers, movers, electricians and buyers performing work at the Auction Site must provide PMI with evidence of insurance. The insurance coverage must be at a level acceptable to PMI and to the seller. PMI reserves the right to withdraw items, alter the order of the sale, accept bids from the seller, and group lots as it may deem appropriate. This auction may include consignment items.

Although all information has been obtained from sources deemed reliable, the auctioneer and seller make no warranty or guarantee, expressed or implied, as to the accuracy of the information herein contained, or contained in our catalog. It is for this reason that buyers should avail themselves of the opportunity to make inspection prior to the auction. Although it is not likely, auction sales are subject to cancellation or postponement. Kindly contact auctioneer prior to attendance.

These terms and conditions may be modified or supplemented by language in the catalog available at the sale site or by announcement at the start of the sale. Bidders should be attentive to those announcements and to the catalog language.

COMBINATION AUCTION & LIQUIDATION SALE

ONLINE REGISTRATION AT BidSpotter and proxibid

1. Use the [link](#) on PMI's website calendar. www.pmi-auction.com for your chosen bidding platform. **DO IT NOW!**
2. This auction will require a Cash, or credit card, or debit card, 100% refundable deposit. If by credit or debit card, it can be added through the (Bidspotter.com or Proxibid.com) fully secure and PCI compliant registration process and will be assessed a 100% refundable \$3,000 (US Bidder) or a \$10,000 (Foreign Bidder) deposit in order to be approved to bid online with this auction. Cash deposits can be made by wire transfer. **DON'T WAIT.** If you are unsuccessful in the auction, the refund of your credit/debit card deposit will occur within 24 hours. Cash deposits will be expedited as well.

If you need assistance, don't hesitate to call (713) 691-4401.

ALL AUCTION ITEM BIDS ARE SUBJECT TO AN 18% BUYER'S PREMIUM.