



ONLINE TIMED AUCTION

WATER PURIFICATION SYSTEMS MANUFACTURER - CH 7 BANKRUPTCY

Featuring: Liquid Crystallizing System; Mobile Test Trailers; Stationary Water Test Systems; Fluid Processing Equip.; DI Water System; RO Systems; Laboratory Equipment; Laser Cutting Machines; ION Exchange Membranes; Pumps; Filters; Shop Tools; Pallet Rack; Parts & MRO Inventory; Food Grade Salt; Activated Charcoal; Power Supplies; Chillers; Forklifts & Pallet Jacks; 33,000 Gal. Fiberglass Tank; MORE!



UNUSED

PURE AQUA BRACKISH WATER RO SYSTEM



UNUSED

DISSOLVED AIR FLOATATION SYSTEM



EVOQUA DI WATER SYSTEM



2022

(3) BESCUTTER LASER CUTTING MACHINES

**WEDNESDAY,
JANUARY 10
TIMED ONLINE ONLY
BIDS START CLOSING
AT 10:00 A.M. CST**

INSPECTION: Monday
& Tuesday, January 8 & 9,
9:00 A.M. to 4:00 P.M.

By Order of the U.S. Bankruptcy Court, Southern District of Texas, Houston Div., Ronald J. Sommers, Chapter 7 Trustee, Case # 23-34231

**MAGNA IMPERIO
SYSTEMS CORP.
(A.K.A. MI SYSTEMS)
7330 N. SAM HOUSTON
PKWY W., SUITE 100
HOUSTON, TEXAS 77064**



ELECTROCHEMICAL NANO DIFFUSION TEST SYSTEM

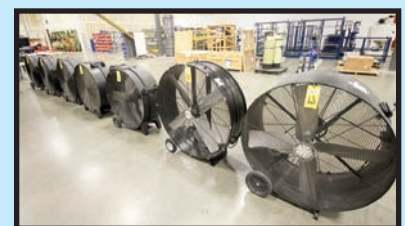
Read Partial Terms & Conditions on Back Page

TIMED ONLINE BIDDING ONLY (NO ONSITE BIDDING):
YOU MUST REGISTER IN ADVANCE FOR ONLINE BIDDING AT THIS AUCTION. Go
to www.pmi-auction.com and click on **BidSpotter**
on our calendar page for this auction sale.



PARR MDL. 5100 REACTOR

BUYER'S PREMIUM: 18% ONLINE



HUGE QUANTITY OF SHOP EQUIPMENT



HANNA KARL FISCHER VOLUMETRIC TITRATOR

Sale Conducted By:

PLANT & MACHINERY INC.
AUCTIONEERS • APPRAISERS • LIQUIDATORS • REAL ESTATE

Ron Moore, TX Lic. #7314

HOUSTON • DALLAS • ST. LOUIS

Headquarters:
1304 Langham Creek Drive, Suite 454
Houston, Texas 77084

PHONE: (713) 691-4401

FAX: (713) 672-7905

E-MAIL: pmi@pmi-auction.com
WEBSITE: www.pmi-auction.com

2020



LCS SKID #1



(1 OF 2) MOBILE TEST UNITS #1



INTERIOR VIEW OF MOBILE TEST UNIT



LCS 10,000 GAL. TANK

LIQUID CRYSTALLIZING SYSTEM (LCS)
MI SYSTEMS LIQUID CRYSTALLIZER, new 2020, creates crystallization of chemicals in the fluid. Skid #1 includes ASME coded 316 SS pressure vessels rated at MAWP 98 @ 150%; Parts under tarp include RO chemical injection units, Glacier Tanks pressure vessel; Skid #2 includes mixers and pumps; Skid 3 contains 10,000 gal. (est.) carbon steel tank (tank has been cleaned out).

ELECTROCOAGULATION TRAILER MOUNT MOBILE TEST SYSTEMS
TRAILER MOBILE TEST UNIT #1, 40' conex on trailer frame outfitted w/Electrochemical Nano Diffusion test system, (2) external tanks for client water, air conditioned, License No. 207B863
TRAILER MOBILE TEST UNIT #2, unused, 40' conex on trailer frame outfitted w/Electro chemical Nano Diffusion test system, GAC (granulated activated charcoal) filter, (no charcoal loaded), MMF (multi-media filter), air conditioned, bolt on/removable external stairway, undercarriage storage rack for stairway etc., License No. 207B862.



DISSOLVED AIR FLOTATION SYSTEM

UNUSED



LCS SKID #2

2020



ELECTROCHEMICAL NANO DIFFUSION TEST SYSTEM



COALESCER MIXER

UNUSED

STATIONARY TEST SYSTEMS
ELECTROCHEMICAL NANO DIFFUSION TEST SYSTEM, for testing client water samples.
(2) ELECTROCHEMICAL NANO DIFFUSION TESTERS, for component testing.
(2) ELECTROCHEMICAL NANO DIFFUSION STACK TESTING DEVICES, (1) unused, for testing cross flow.
MI SYSTEMS GENERATION 3 TEST UNIT AND TANK; PRESSURE TEST RACK.

FLUID PROCESSING EQUIPMENT
MI SYSTEMS DISSOLVED AIR FLOTATION SYSTEM, unused, skid mounted, 316 SS construction, injects air into production water causing oil to raise and then skimmed off.
MI SYSTEMS COALESCER MIXER, (3) motors w/twin blade paddles.
BAKER MDL. SUR-FLO DISSOLVED AIR FLOTATION SYSTEM, multiple skids, 10 GPM.
DI WATER SYSTEM
EVOQUA DEIONIZATION RECIRCULATING SYSTEM, Mdl. DIRS, (does not include swappable filter tanks).



(1 OF 2) SMALL ELECTROCHEMICAL NANO DIFFUSION TESTERS



MI SYSTEMS GENERATION 3 TEST UNIT AND TANK



PRESSURE TEST RACK



EVOQUA DI WATER SYSTEM

DON'T MISS THIS SALE!



UNUSED

PURE AQUA INC. BRACKISH WATER RO SYSTEM



3-VESSEL MULTI-MEDIA FILTER SKID



LARGE QUANTITY

PARTIAL VIEW OF ION EXCHANGE MEMBRANE INVENTORY

MISCELLANEOUS RO SYSTEMS, FILTERS, COMPONENTS & PUMPS

PURE AQUA INC. MDL. BW-57K-2480-3 BRACKISH WATER RO SYSTEM, unused, 22.2 GPM, S/N 0012909.

3-VESSEL MULTI-MEDIA FILTER SKID, (3) Everfilt Mdl. M48-2A-3A multi-media vessels, 6 PSI max., equipped w/Everfilt backwash control, S/N 29-5-95.

PROMINENT MDL. PROMIX SSG CHEMICAL INJECTOR SKID, new 2020 (unused), 120 x 2, S/N 2020119629.

(3) FOREVER PURE 2000 GPD LPD SEAWATER RO SYSTEMS ON SINGLE RACK.

(2) PENTAIR RO SYSTEMS ON SINGLE RACKS.

(2) TITAN CENTRIFUGAL PUMPS, (1) 40 HP x 3X4-13 MT and (1) 15 HP x 3X4-10H MT, 4" dia. suction.

WORK IN PROCESS

(3) MI SYSTEMS FILTRATION SKIDS, Mdl. ARCA upgrade.

ION EXCHANGE MEMBRANE INVENTORY

FUGIFILM, CEM Type 1; 2; 12; 16. Fugifilm, AEM Type 2; 12; 10R.

NON-WOVEN FABRIC INVENTORY

SWM TYPE DELNET APERTURED FILM, boxed, in 69.11-lb. rolls; **MYLAR FILM ROLLS**; MORE.

MRO SUPPLIES, RAW MATERIAL & SCRAP

(33,000-LB.) ALUMINUM (SCRAP) W.I.P. PLATES; **PALLETS OF USC "TRU-FLO" UNTREATED LCM FOOD GRADE SALT**; **JACOBI ACTIVATED CHARCOAL BAGS**; **WIDE ASSORTMENT OF PVC PIPE AND FITTINGS**; **HEAVY DUTY ELECTRIC CABLE**; **JOHN GUEST 1/2" X 3/8" NPTF PUSH TO CONNECT FITTINGS**; **ZINC NUTS AND WASHERS**; **7.5" AND 7" BOLTS**; **VERSILON 1/8" AND 1/4" DIA. CLEAR TUBING**; **KURI TEC 5/16" AND 1/2" DIA. CLEAR TUBING**; **LASER REPLACEMENT TUBES**; **S&A MDL. CW-5200 PORTABLE INDUSTRIAL CHILLERS**; **LASER PARTS**; **POWER SUPPLY MODULES**; **WATERBETTER SS FILTER CANISTERS**; **ASSORTED SMALL PUMPS, VALVES AND ACTUATORS**; **PANEL MOUNT H.D. POWER SUPPLIES MUCH MORE!**



(3) MI SYSTEMS FILTRATION SKIDS – ARCA WORK IN PROCESS



(2) TITAN CENTRIFUGAL PUMPS – 40 HP, 15 HP



(33,000-LB.) ALUMINUM (SCRAP) W.I.P. PLATES



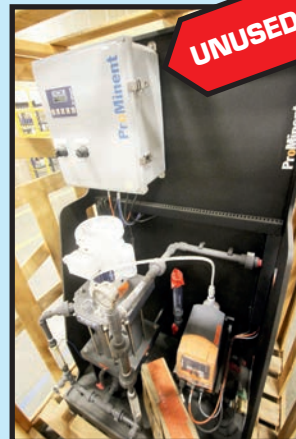
(6) S&A MDL. CW-5200 PORTABLE INDUSTRIAL CHILLER



(2) WATERBETTER SS FILTER CANISTERS



(3) FOREVER PURE 2000 SEAWATER RO SYSTEMS



PROMINENT CHEMICAL INJECTOR SKID



CABINET FULL OF LASER REPLACEMENT PARTS

INSPECTION: Monday & Tuesday, January 8 & 9, 9:00 A.M. to 4:00 P.M.



2022

LASER CUTTING MACHINES
 (3) BESCUTTER SERIES PRO-T MDL. CMA1810-FET-C, new 2022, CO2 Class 4, 1,800 x 1,000 mm cutting area, Solid State laser.
 (5) MORN MDL. MT-L1610AMT20, tube type.
 EPILOG MDL FUSION M2.
 LAGUNA SMARTSHOP LASER IMX.

(3) BESCUTTER LASER CUTTING MACHINES

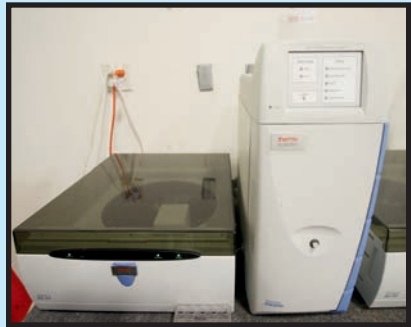
LABORATORY, 3D PRINT & PORTABLE TEST EQUIPMENT
 (2) DIONEX AQUION ION CHROMATOGRAPHY SYSTEM W/AUTOSAMPLER; PARR REACTOR MDL. 5100; HANNA INSTRUMENTS MDL. 903 KARL FISCHER VOLUMETRIC TITRATOR; JENWAY MDL. 7205 UV/VISIBLE SPECTROPHOTOMETER; SOUTHWEST SCIENCE CENTRIFUGE; MOTT FUME HOOD 4'W.; QUINCY MDL. 10 LAB OVER; HACH MDL. DRB200 DIGITAL REACTOR; PORTABLE FLOCCULATION TESTER; BRANSON SONICATOR MDL. 1800; RAISE3D PRO2 PLUS 3D PRINTER; KLEIN AND FLUKE PORTABLE TESTERS; MUCH MORE!



PARR MDL. 5100 REACTOR



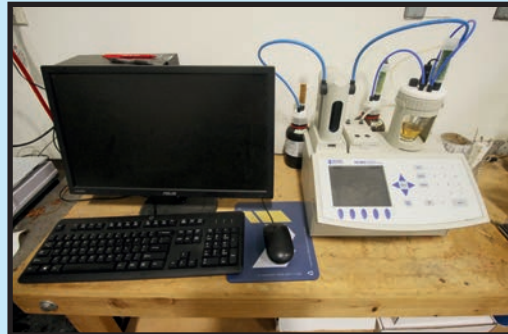
RAISE3D PRO2 PLUS 3D PRINTER



(1 OF 2) ION CHROMATOGRAPHY SYSTEMS W/AUTOSAMPLER



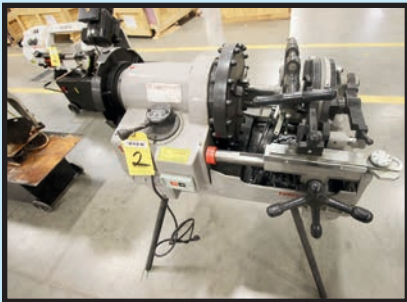
(1 OF 5) MORN LASER CUTTING MACHINES



HANNA KARL FISCHER VOLUMETRIC TITRATOR

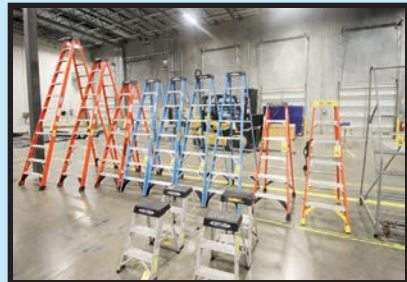


FLUKE TEST EQUIPMENT



POWER PIPE THREADER

COLLABORATIVE ROBOT ARMS
 (4) NACHI 6-AXIS MDL. CZ10 ROBOT ARMS, slim arm, new 2018. (See catalog for pictures)
SHOP TOOLS & EQUIPMENT
 RIDGID MDL. 975 PIPE CRIMPER MOUNTED ON A RIDGID 300 THREADER; (2) KLUTCH HZ. BANDSAWS; PIPE THREADING KITS; SHOP VACS; FLAMMABLE MATERIAL STORAGE CABINETS; PORTABLE SHOP CRANES; MAG BASE DRILL; SHOP FANS; ROLLING TOOLS CABINETS; POWER TOOLS; HAND TOOLS; PIPE STANDS; TAP AND DIE SETS; JACK STANDS; UTILITY CARTS; LADDERS; BANDING CARTS; M&R DEPT. WORK BENCHES AND TOOLS; MORE.



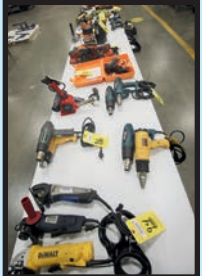
(12+) ASSORTED LADDERS



PARTIAL VIEW OF ROLLING TOOLBOXES



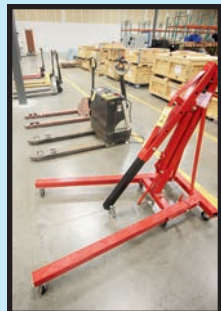
TAP AND DIE SETS AND MORE!



POWER TOOLS



RIDGID CRIMPER THREADER COMBO



MATERIAL HANDLING EQUIPMENT



SULLAIR 10 HP AIR COMPRESSOR



INGERSOLL RAND 10 HP AIR COMPRESSOR



SAMPLE VIEW OF WATER TUBS



(1 OF 2) 20' CONEX BOXES

SCREW TYPE AIR COMPRESSORS

SULLAIR SERIES ST7 10 HP; INGERSOLL RAND (EST). 10 HP.

SCISSOR LIFT MANLIFT

GENIE MDL. GS-2632, built in charger, cushion tires.

CONEX BOXES

20' CONEX BOX, wired for electrical, internal air conditioning unit mounted in back internal wall, small room w/man door, switchgear, man door to the outside.

20' CONEX BOX, w/power panel, not built out.

MATERIAL HANDLING EQUIPMENT

40' SPREADER BAR; PALLET JACKS; ELECTRIC PALLET JACK.



GENIE MDL. GS-2632 SCISSOR LIFT

WATER STORAGE TANKS & TUBS

(12) BLACK TUB TYPE RECIRCULATING TANKS W/DRAINS; VARIOUS LARGE PLASTIC TANKS; SEE CATALOG.

STORAGE TANK

33,000 GAL. CAP. NATIONWIDE FIBER-GLASS TANK AND PIPE, 15.5'W. x 24'H., Cert No. NSF61.



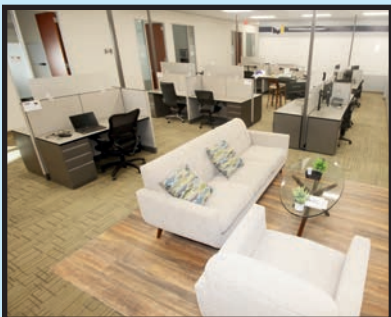
(4) RECIRCULATING TANKS

**WEDNESDAY,
JANUARY 10**

**TIMED ONLINE ONLY
BIDS START CLOSING
AT 10:00 A.M. CST**



SAMPLE VIEW OF PLASTIC TANKS



(1 OF 3) RECEPTION AREAS

OFFICE FURNITURE & OFFICE MACHINES

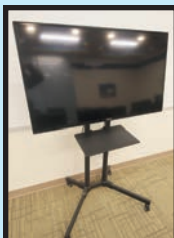
LARGE QUANTITY DESKS, CHAIRS, CUBICLE WORKSTATIONS; RECEPTION AREA FURNITURE, (3) CONFERENCE ROOM TBL. AND CHAIRS; BREAKROOM APPLIANCES AND FURNITURE; REC ROOM POOL TBL. AND BASKETBALL THROW; TOSHIBA NETWORK COPIERS; SHREDDER; LARGE SCREEN TV/ MONITORS; DOUBLE MONITOR DESKSTANDS; MUCH MORE.



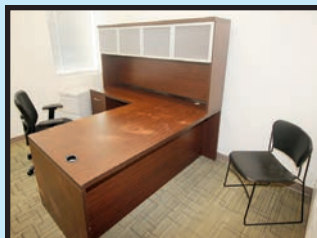
(1 OF 3) CONFERENCE TABLES



TOSHIBA NETWORK PRINTER/ SCANNER



SAMPLE VIEW OF LARGE SCREEN TVS



SAMPLE VIEW OF TYPICAL OFFICE SETTING



SAMPLE VIEW OF CUBICLES

DATED MATERIAL – PLEASE DELIVER

WATER PURIFICATION SYSTEMS MANUFACTURER – CH 7 BANKRUPTCY

Featuring: Liquid Crystallizing System;
Mobile Test Trailers; Stationary Water Test
Systems; Fluid Processing Equip.; DI Water
System; RO Systems; Laboratory Equipment;
Laser Cutting Machines; ION Exchange
Membranes; Pumps; Filters; Shop Tools; Pallet
Rack; Parts & MRO Inventory; Food Grade Salt;
Activated Charcoal; Power Supplies; Chillers;
Forklifts & Pallet Jacks; 33,000 Gal. Fiberglass
Tank; MORE!



WEDNESDAY, JANUARY 10
TIMED ONLINE ONLY • BIDS START CLOSING AT 10:00 A.M. CST



**ATTENTION: PLANT MANAGER
OR EQUIPMENT BUYER**

Presorted
First Class Mail
U.S. Postage
PAID
Eugene, Oregon
Permit No. 17



LIQUID CRYSTALLIZING SYSTEM

FORKLIFTS & PALLET JACKS

2019 TOYOTA 8,000-LB. BASE CAP. MDL. 8FD35U, diesel, 89" 3-stage mast, 187" lift ht., side shift, 48" forks, pneumatic tires, 6,074 H.O.M., S/N 12154.

2018 TOYOTA 5,000-LB. CAP. MDL. 8FBCU25, electric, 83" 3-stage mast, 189" lift ht., side shift, 42" forks, 36 v. battery and charger, S/N 67124.

2016 RAYMOND 3,000-LB. BASE CAP. MDL. 425-C30TT, electric, 88" 3-stage mast, 205" lift ht., side shift, 42" forks, 36 v. battery and charger, S/N 16-49699.

2016 HYSTER 3,000-LB. BASE CAP. MDL. R30XMS3 ORDER SELECTOR, 95" 3-stage mast, 213" lift ht., 24 v. battery and charger, 923 H.O.M., S/N E174N03656P.

(2) 2016 RAYMOND PALLET JACKS MDL. 8410, 27" x 96", 24 v. battery and charger, S/N 841-16-31439, S/N 841-16-31440.



TOYOTA 8,000-LB. BASE CAP.
DIESEL FORKLIFT

ONLINE REGISTRATION

Register to bid at **BidSpotter**

1. Use the link to Bidspotter.com on PMI's website calendar. www.pmi-auction.com DO IT NOW!
2. This auction may require a Cash, or credit card, or debit card, 100% refundable deposit. If by credit or debit card, it can be added through the Bidspotter.com fully secure and PCI compliant registration process and will be assessed a 100% refundable \$3,000 (US Bidder) or a \$10,000 (Foreign Bidder) deposit in order to be approved to bid online with this auction. Cash deposits can be made by wire transfer. **DON'T WAIT.** If you are unsuccessful in the auction, the refund of your credit/debit card deposit will occur shortly after the auction ends. Cash deposits will be expedited as well.

If you need assistance, don't hesitate to call (713) 691-4401.

**ALL BIDS ARE SUBJECT TO AN
18% BUYER'S PREMIUM.**

PARTIAL TERMS & CONDITIONS:

18% Buyer's Premium. Removal deadline January 31, 2024.

Everything will be sold to the highest bidder or bidders for cash in accordance with the auctioneer's Customary Terms of Sale, copies of which will be posted on our website.

ALL PAYMENTS MUST BE MADE BY CASHIER'S CHECK, WIRE TRANSFER OR COMPANY CHECK WITH BANK LETTER GUARANTEEING PAYMENT TO PLANT & MACHINERY INC.

Here is an example of what your letter should be: Mr. "Customer Name" is a customer of this bank. This bank will guarantee unqualified payment to PMI on the account listed herein up to the amount of \$_____. This letter is good until February 9, 2024.

In default of payment of bills in full within the time therein specified, the Auctioneer in addition to all other remedies allowed by law, may retain all monies received as deposit or otherwise, as liquidated damages. All items must be removed by the time announced at the start of the sale.

Lots not paid for and/or removed within the time allowed may be resold at public or private sale without further notice, and any deficiency, together with all expenses and charge of resale, will be charged to the defaulting purchaser.

The buyer acknowledges that he or an agent has inspected all of the assets upon which he will be bidding and/or does purchase.

Buyer agrees to accept assets purchased "AS IS," WITH "ALL FAULTS" AND "WITH REMOVAL AT BUYER'S RISK AND EXPENSE." THE AUCTIONEER EXPRESSLY DISCLAIMS ON THE PART OF THE

AUCTIONEER AS AGENT AND THE SELLER, ANY WARRANTY AS TO FITNESS OR USABILITY OF ALL THE ASSETS, AND THE BUYER EXPRESSLY WAIVES ANY CLAIM IN RESPECT TO ANY POSSIBLE FUTURE USE OF ANY ASSET PURCHASED FOR ANY PURPOSE WHATSOEVER.

The buyer does hereby assume and does agree to indemnify and hold the auctioneer harmless from any future claim which shall pertain to the fitness or use of that asset as being purchased. Riggers, movers, electricians and buyers performing work at the Auction Site must provide PMI with evidence of insurance. The insurance coverage must be at a level acceptable to PMI and to the seller. PMI reserves the right to withdraw items, alter the order of the sale, accept bids from the seller, and group lots as it may deem appropriate. This auction may include consignment items.

Although all information has been obtained from sources deemed reliable, the auctioneer and seller make no warranty or guarantee, expressed or implied, as to the accuracy of the information herein contained, or contained in our catalog. It is for this reason that buyers should avail themselves of the opportunity to make inspection prior to the auction. Although it is not likely, auction sales are subject to cancellation or postponement. Kindly contact auctioneer prior to attendance.

These terms and conditions may be modified or supplemented by language in the catalog available at the sale site or by announcement at the start of the sale. Bidders should be attentive to those announcements and to the catalog language.