



AUCTIONS

**3
DAYS**

HUGE 3-DAY AUCTION OF A VINYL SHEET FLOORING FACILITY

FEATURING: 170" WIDE KOCHSIEK (BOBST) 8-COLOR ROTOGRAVURE PRINTING LINE; 168" OLBRICH COATING & FUSION LINE; INK MIXING FACILITIES; (3) THERMAL OXIDIZERS; AUTOMATIC ROLL SLITTING & TRIMMING EQUIP.; ROLL PACKAGING; LARGE CAP. SHREDDING SYSTEMS; BULK MATERIAL STORAGE & HANDLING; MAINTENANCE TOOLROOM; LAB & Q.C. EQUIP.; HUGE ASSORTMENT OF MRO COMPONENTS; 1,000'S OF PALLET RACKS; LATE MODEL FORKLIFTS & TUGGERS; 2017 SPOTTING TRUCK; 2020 CHEVY 2500 CREW CAB PICKUP; PLUS TREMENDOUS SCRAP OPPORTUNITY & MUCH MORE!

Assets Located at the Former

ARMSTRONG FLOORING MANUFACTURING PLANT

4115 NORTH PERKINS ROAD, STILLWATER, OKLAHOMA 74075

INSPECTION:

Monday & Tuesday,
October 31 & November 1,
9:00 A.M. to 4:00 P.M.

**18% BUYER'S
PREMIUM
WILL APPLY**

**DAY 1: WEDNESDAY, NOVEMBER 2 • 10:00 A.M.
LIVE WEBCAST ONLY (NO ONSITE BIDDING)**



KOCHSIEK (BOBST) 8-COLOR ROTOGRAVURE PRINTING PRESS



KALMAR OTTAWA SPOTTING TRUCK

2017

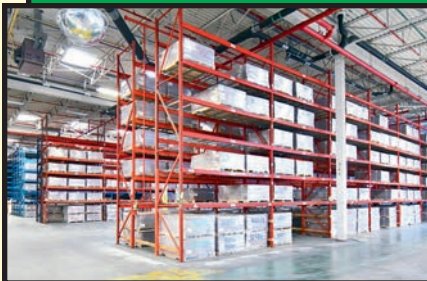
**3,683
H.O.M.**

**VERCOPLAN
100 HP
SHREDDER
SYSTEM**

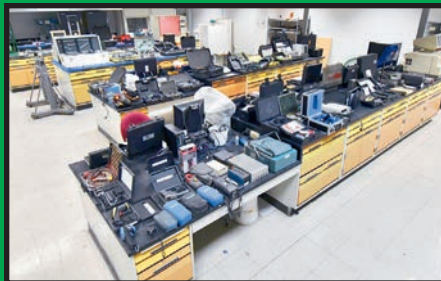


2020

**DAY 2 & DAY 3: THURSDAY & FRIDAY,
NOVEMBER 3 & 4—TIMED ONLINE ONLY
BIDS START CLOSING AT 10:00 A.M. EACH DAY**



1,000+ SECTIONS OF TEARDROP PALLET RACKING



HUGE ASSORTMENT OF LABORATORY AND TEST EQUIPMENT



MOTORS, GEARBOXES AND BLOWERS

FOR BIDDING AT THIS AUCTION. Go to www.pmi-auction.com and click on the calendar page for link to online bidding platforms for this auction.

Read Partial Terms & Conditions on Page 11

Sale
Conducted
By:

PLANT & MACHINERY INC.

AUCTIONEERS • APPRAISERS • LIQUIDATORS • REAL ESTATE

1304 Langham Creek Drive, Suite 454, Houston, Texas 77084

PHONE: (713) 691-4401

FAX: (713) 672-7905

E-MAIL: pmi@pmi-auction.com • WEBSITE: www.pmi-auction.com

HOUSTON • DALLAS • ST. LOUIS

In Conjunction With:



**Gordon
Brothers**



KOCHSIEK TURRET UNWINDER



KOCHSIEK 42-PASS UNWIND ACCUMULATOR



KOCHSIEK 8-COLOR ROTOGRAVURE PRINTING PRESS



PULL STANDS AND PRINT STANDS



KOCHSIEK PRINT STANDS



AUTOMATIC PRINT ROLL STORAGE AND RETRIEVAL SYSTEM



DUAL TURRET REWINDER



PROINERT INERT GAS FIRE SUPPRESSION SYSTEM

2021



SOLVENT TANK SYSTEM



COWLES 25 HP DISPERSER



NOVAFLOW INK MIXING SYSTEM

**DAY 1:
WEDNESDAY,
NOVEMBER 2
10:00 A.M.
LIVE WEBCAST
ONLY (NO ONSITE
BIDDING)**

ROTOGRAVURE PRINTING LINE

KOCHSIEK (BOBST) 8-COLOR 170" WIDE WEB, new 1988, 220 FPM line speed, (20) roll storage stand, 180" x 15,000-lb. dual turret unwinder, 180" splicing tbl., 20 HP pull roll stand, 42-pass unwind accumulator stand w/250 linear yard capacity, guide roll stand, and (3) front and rear 10 HP roll stands, (8) Kochsiek shaft-driven web-fed rotogravure printing units, compensator registration, 200 HP, steam heated arch dryers, automatic roll changing system, automated roll cars w/roll handle, (27) pairs of tree racking, (360+) 20" x 170" chrome plated printing rolls, 20 HP pull roll stand, 34-pass rewind accumulator, 200 linear yard capacity, guide table, 20 HP rear pulling stand, 52" dia. x 15,000-lb. dual turret rewinder, retrofitted and modernized central control systems.

Selling Bulk and Piecemeal. (Auctioneer's note: This system will be offered as individual components and as a complete line at the sale.)

INK STORAGE, MIXING & DELIVERY PLUS FIRE SUPPRESSION SYSTEMS

PROINERT INERT GAS FIRE SUPPRESSION SYSTEM, new 2021, IG-541 (5N2-4Ar-1CO2) gas, (101) gas bottles, 300 bar bottle pressure.

HALON FIRE SUPPRESSION SYSTEM, (16) spherical storage tanks and control system.

NOVAFLOW MDL. NT50-20B-4T-800 PLC MIXING AND DISPENSING SYSTEM, new 2007, 24-station, w/diaphragm pumps, S/N 1273.

COWLES MDL. W-25-2X DISPERSER, new 1998, 25 HP, pneumatic lift.

(3) COWLES MDL. W-24-2 DISPERSERS, new 1996, 10 HP, pneumatic lift.

(3) COWLES 5 HP DISPERSERS, new 1996, pneumatic lift.

DW RENZMANN MDL. HDB-48-7-5 55 GAL. DRUM WASHER, new 1988, w/750-lb. cap. dumper, S/N 11480.

(2) 6' DIA. X 12'L. CARBON STEEL SOLVENT STORAGE TANKS, w/related piping, pumps and controls.

LARGE QUANTITY OF STAINLESS STEEL DAY TANKS, PUMPS, MIXERS, VIBRATORY FINISHERS, COMPLETE INK ANALYSIS LAB.

2017



OVERALL VIEW OF COATING LINE



BRUCKNER 12-ZONE GAS FIRED BELT OVEN



DUAL HEAD UNWIND STAND



26-PASS REWIND ACCUMULATOR



THERMO SCIENTIFIC TRAVELING HEAD BETA SCANNERS



OLBRICH ROLL COATER

COATING & FUSION LINE

OLBRICH 8' TO 14' WIDE CAPACITY, new 1987, 150 FPM line speed, 25 mil.–80 mil. coating thickness, 14'W. x 15,000-lb. dual unwind stand, 170" x 12' splicing tbl., 26-pass unwind accumulator stand, front and rear 5 HP pulling stands, Thermo Scientific traveling head beta scanner, Olbrich reverse roll coating stand new 2006, w/24" dia., coater roll, 10 HP back-up roll, Olbrich hot oil drumming stand, w/84" dia. chromed hot oil drum, 4-roll cooling stand, 24" chilled rolls, Thermo Scientific traveling head beta scanner, 90 deg. air-roll turning bar, Olbrich polyurethane coating stand, new 2006, 18" dia. chrome plated meter roll, 18" dia. Chrome plated applicator roll, 18" dia. rubber backup roll, Thermo Scientific traveling head beta scanner, Idler roll section, Olbrich reversible coating stand, coating delivery system, w/stainless vessels, 75 HP mixer, tubs, piping and controls, Thermo Scientific traveling head beta scanner, Bruckner 12-zone gas-fired belt oven, stainless mesh belt, 480 deg., 120'L., 200 kW infrared heater, Olbrich steel to rubber embossing stand, cooling drum stand, (4) 32" dia. chilled rolls, Thermo Scientific traveling head air caliper scanner, Futec inspection system, Olbrich 26-pass rewind accumulator, 42" dia. x 15,000-lb. surface type roll rewinder, (2) rewind drums, roller conveyor. **Selling Bulk and Piecemeal. (Auctioneer's note: This system will be offered as individual components and as a complete line at the sale.)**

VINYL & CARPET MACHINERY

PINNACLE CONVERTING CARPET AND VINYL SLITTING SYSTEM, 12' max. roll width, 6' output, Olbrich rewinder, Micro-processor control, shear blade w/nip rollers, (2) 2,000-lb. cap. hyd. material lifts, Carpetmaster craft paper wrapper payoff unit, slatted output conveyors.

ACCU-CUT MDL. Q9 CARPET AND VINYL CUT AND ROLL MACHINE, new 2017, S/N Q903-20-17.

ATLANTA ATTACHMENT CO. MDL. 1384A ROLL MATERIAL CUTTER, new 2022, S/N 266124062232 (new, never installed).

AUTOMATIC HANDLING INTERNATIONAL MDL. 10110PNL VINYL SLITTER TABLE, 12' roll handler.

VINYL SAW LINE FOR LUXURY VINYL TILE, (8) blades, 51" ttl. width, pwr. roller conveyor infeed.

OLIVER MFG. MDL. VINYLMASTER MATERIAL INSPECTION TABLE, Doyle Super H light unit, S/N 011205.



ROLL MATERIAL CUTTING SYSTEM



AIR-BEARING TURNING BAR



ACCU-CUT MDL. Q9 CARPET AND VINYL CUT AND ROLL MACHINE



OLBRICH REWIND SYSTEM



PINNACLE CARPET AND VINYL SLITTING SYSTEM

INSPECTION:

Monday & Tuesday, October 31 & November 1, 9:00 A.M. to 4:00 P.M.

FOR BIDDING AT THIS AUCTION. Go to www.pmi-auction.com and click on the calendar page for link to online bidding platforms for this auction.



VERCOPLAN 100 HP SHREDDER SYSTEM

2020



LITTLEFORD KM-8000 PLOW MIXER



A.E.C. 200 HP GRANULATOR

SHREDDER SYSTEM

VERCOPLAN TYPE VAZ1300MXL, new 2020, 52" x 58" hopper opening, 3.75 cu. ft. hopper volume, 20" rotor dia., 100 HP drive motor, assorted screens, incline exit belt conveyor to super sack load stand, S/N 16322-01.

GRANULATORS

A.E.C., new 2005, 4' x 2' opening, Baldor 200 HP drive motor, noise enclosure, bottom blower feed unit, skid frame mtd.

NELMOR MDL. RG1634, 30 HP motor, skid mtd., currently disassembled, S/N 98J02014.

PLOW MIXER

LITTLEFORD MDL. KM-8000, new 1998, 225 cu. ft. cap., stainless shell, hopper feed w/vibratory bin bottom, weigh scale hopper, S/N 42580-5066.

POSITIVE DISPLACEMENT BLOWERS

HOFFMAN MDL. 12B07-ADGO, new 2020, 25 HP drive motor, skid mtd., S/N P024757.

ROOTS, 25 HP drive motor, skid mtd.

(10) ROOTS UNIVERSAL RAI BLOWERS, w/various HP motors.

ROOTS RAM BLOWER.

(2) A.E.C. BLOWERS, blower package 412 ram/40 HP.

DUST COLLECTORS

STACLEAN MDL. 325-10-AS AND 169-10-AS 2-CHAMBER PULSE-JET DUST COLLECTOR, new 1998, 75 HP and 50 HP blowers, screw conveyor cleanout, large selection of spare bags, S/N 18010, S/N 18011.

FLEX-KLEEN MDL. 21/36PVBL18IIIIG, S/N 300637.

DUST COLLECTION SYSTEM

SPENCER MDL. 30207B1, 2-compartment, conical bottoms, 30 HP drive, S/N 316548.

DRYING OVENS

SIERRA MDL. S8FES, 114"W. x 48"D. x 60 "H., S/N J103903.

LEWCO HEAT PRO MDL. HPSC21-D01-899-P02, 55"W. x 108"D. x 72"H., 2-door, S/N 991821.

SUPER SACK FILLING SYSTEM

FLEXICON KICE SUPER SACK, Kice multi-aspirator zig-zag separator tower, Microprocessor control, Rice Lake weigh hopper, (2) Flexicon Super Sack loading stations w/auto. handling, S/N 48553.

FINISHED GOODS WRAPPER SYSTEMS

WILDWOOD INDUSTRIES 14' PACK MACHINE, Sullivan unwinder, roll turner, feeder roll, Zebra label printers, S/N 737MP01.

WILDWOOD INDUSTRIES CARDBOARD CORE WINDER, new 1999, magazine core delivery, conveyors slitter head, S/N 870057.

AUTOMATIC HANDLING INC. KRAFT PAPER WRAP AND CAP SECTION, new 1998, paper unwind stand, header and end plug press station, S/N 98051-170.



SUPER SACK UNLOADER AND WEIGH FEED HOPPER



STACLEAN MDL. 325-10-AS AND 169-10-AS DUST COLLECTOR

SPENCER DUST COLLECTION SYSTEM

DAY 1: LIVE WEBCAST ONLY (NO ONSITE BIDDING)



KICE SUPER SACK BAGGING SYSTEM



POSITIVE DISPLACEMENT BLOWERS

2020



AUTOMATIC HANDLING SYSTEMS KRAFT PAPER WRAPPER





REECO 55,000 CFM REGENERATIVE THERMAL OXIDIZER

DAY 1:

THERMAL OXIDIZING SYSTEMS

REECO 55,000 CFM REGENERATIVE THERMAL OXIDIZER, new 1988, 800 HP fan drive, 7-chamber design.

REECO 45,000 CFM REGENERATIVE THERMAL OXIDIZER, new 1998, 450 HP fan drive, single chamber design.

REECO 30,000 CFM REGENERATIVE THERMAL OXIDIZER, new 1988, 350 HP fan drive, 5-chamber design.



REECO 30,000 CFM REGENERATIVE THERMAL OXIDIZER



STAINLESS MIXING AND STORAGE SYSTEM

12 AVAILABLE



STAINLESS STEEL MATERIAL SILOS



MERRICK WEIGH SCALE HOPPERS W/SUPER SACK UNLOADERS

6 AVAILABLE

BULK MATERIALS EQUIPMENT

BULK FLUID TRANSFER SYSTEM CONSISTING OF: (7) entry points w/pumps, valves and stainless piping.

(7) STAINLESS STEEL BULK STORAGE TANKS FROM 250 TO 12,000 GALLON CAPACITY.

MATERIAL TRANSFER AND STORAGE INC. SUPER SACK UNLOADING SYSTEM, weigh hopper, slide gate and flow controller, integrated blower, Harrington 2 T. cap. elec. chain hoist and pwr. trolley, S/N 6505-AE.

(2) APPROX. 5,000-LB. CAP. POWDER HOPPERS, w/suppt. stand and weigh scale feed and blower, (2) hyd. scissor lift rotating tpls.

(6) MERRICK INDUSTRIES MDL. 950 WEIGH SCALE FEEDERS, w/cone bottom surge hoppers, super sack unloader, fabricated frame.

(2) BEST SUPER SACK UNLOADING SYSTEMS, Budget 2 T. cap. elec. hoist, cone bottom hopper w/rotary blower, 6-pos. load stand.

(2) KICE MDL. VR21-4H PNEUMATIC MATERIAL TRANSFER SILOS, new 2014, pneumatic gate valves, Westinghouse blowers.

(12) STAINLESS STEEL CONE BOTTOM BULK POWDER SILOS, 10' dia. x 20' ht., w/vibratory bin feeders and gear driven blowers.

HYDRAULIC BIN DUMPER, w/cone bottom bin.

VIBRATORY CONICAL BIN, w/weigh hopper.

750 T. LIMESTONE STORAGE SILO.

55 T. CARBON STEEL STORAGE SILO.



ASSORTED STAINLESS STEEL TANKS



SUPER SACK UNLOADER W/BIN, BLOWER AND 6-POSITION CRANE SYSTEM



HOPPER FEED AND BIN DUMPER



KICE BULK MATERIAL DELIVERY BINS

2014



MATERIAL BINS W/WEIGH HOPPERS

**WEDNESDAY, NOVEMBER 2
10:00 A.M.**



**SUMMIT
18" x 80"
ENGINE LATHE**



**COLCHESTER
15" x 50"
ENGINE LATHE**

ENGINE LATHES

SUMMIT 18" X 80", taper attach., steadyrest, quick change toolpost w/holders.
CLAUSING COLCHESTER 15" X 50", Newall D.R.O., taper attach., steadyrest, rotating turret stop, follow rest, collect chuck, 3-jaw, 4-jaw and 6-jaw chucks, assorted collets.

VERTICAL TURRET MILLS

SUMMIT MDL. EVS-550B, new 2019, 11 x 52" tbl., hardened and ground ways, electronic variable spd. head from 55-3,650 RPM, pwr. drawbar, pendant control, long. pwr. feed, S/N 9668.
CHINFONG, 10 x 42" tbl.

MACHINE SHOP EQUIPMENT

SUMMIT MDL. 03337151 ELECTRONIC DRILL PRESS, new 2019, variable spd., adj. ht. tbl.; **JET 12" HORIZONTAL BANDSAW** w/roller infeed conveyor; **SCOTCHMAN 40 T. CAP. MDL. 4014C IRONWORKER**, angle cutting attach., roller infeed conveyor, bar shear, assorted punches and dies, S/N 4426M990; **JET MDL. VBS1408 VERTICAL BANDSAW**, 14" throat depth, blade welder and grinder; **GREENERD DEEP THROAT ARBOR PRESS**; **RIDGID MDL. 535 PIPE THREADER**, (2) die heads, reaming attach., pipe cut-off, S/N 405086; **BALDOR BUFFER/GRINDER**; **DELTA COMBINATION BELT/DISC SANDER** on fabricated stand; **JET COMBINATION BELT/DISC SANDER** on stand.

H-FRAME PRESS

REDLINE STANDS 150 T. CAP., new 2020, 13-3/4" stroke, 39-3/8" btwn. uprights, 34-1/2" max. ram to bed, adj. bed, integrated hyd. system.

WELDING MACHINES

MILLER ECONOTIG TIG WELDER, 130 amps, 25 v. TIG torch, foot pedal control, S/N N.A.
LINCOLN IDEALARC 250 ARC WELDER.
MILLER MILLERMATIC 250 INTEGRATED MIG WELDER.
MILLER MILLERMATIC 252 INTEGRATED MIG WELDER.
MILLER TRAILBLAZER PORTABLE WELDING SYSTEM, LPG pwrd., generator, fabricated stand w/bottle rack and lead reels, S/N LE382978.
MILLER DYNASTY 200 PORTABLE TIG WELDER, w/accessories and running gear.



SUMMIT VERTICAL TURRET MILLING MACHINE

2019

INSPECTION:

Monday & Tuesday,
 October 31 & November 1,
 9:00 A.M. to 4:00 P.M.

PLASMA CUTTERS

HYPER THERM POWERMAX 125, new 2019, leads.
HOBART AIR FORCE 250CI, built-in air compressor.



REDLINE 150 T. H-FRAME SHOP PRESS

2020



MILLER TRAILBLAZER LPG PORTABLE WELDER



LANE TECH PALLET WRAPPER (SEE PAGE 7)



MILLER DYNASTY TIG WELDER



HYPER THERM PLASMA CUTTER

2019

DON'T MISS THIS SALE

FOR BIDDING AT THIS AUCTION.

Go to
www.pmi-auction.com
 and click on the calendar page for link to online bidding platforms for this auction.

PALLET WRAPPERS

(2) PREDATOR MDL. SS (BY HIGHLIGHT INDUSTRIES), new 2019, 48" rotating tbl.
LANTECH, S/N T0949.

FLOOR SCRUBBER

TENNANT MDL. 7400, LPG pwr., S/N 7400-3568.

PERSONNEL LIFTS

CONDOR MDL. A42J SELF-PROPELLED BOOM LIFT, 500-lb. platform weight cap., Z-boom, battery pwr., 42' platform height, 22'-9" reach, platform rotation, S/N A040002AB.

SKYJACK MDL. SJ33226 SELF-PROPELLED SCISSOR LIFT, new 2019, 500-lb. platform cap., 26' drive ht., battery pwr., S/N 27042354.

JLG MDL. 2032E2 SELF-PROPELLED SCISSOR LIFT, battery pwr.

TUGGERS

(3) TAYLOR DUNN TIGER MDL. TC-30C, new 11/2018, LPG pwr., 3,000-lb. normal drawbar pull, S/N 311311, S/N 311312, S/N 311310.

(3) CLARK MDL. CT-30, LPG pwr., 3,000-lb. towbar cap., S/N CT-237-6560CB, S/N CT-322-6560CB, S/N CT-236-6560CB (out of service).

CARRY DECK CRANE

BRODERSON 17,000-LB. CAP. MDL. IC80, LPG pwr., 4-wheel steer, 3-section telescoping boom w/10' swing-away jib, Messick 10 T. cap. block, built-in outriggers, Kruger load monitor, 2,297 H.O.M., S/N 365778.

SPOTTING TRUCK

KALMAR OTTAWA MDL. T2, new 2017, diesel engine, 3,683 H.O.M., S/N 346511.

PICKUP TRUCK

2022 CHEVROLET SILVERADO CUSTOM MDL. 2500HD CREW CAB 4X4, 6' bed, Line-X spray-on bed liner, ODO: 2,244 miles, OK License Plate 10C914, VIN 1G64YME76NF148567.

2000 CHEVROLET SILVERADO MDL. 1500, 6' bed, bed liner, ODO: 105,000 miles, OK License Plate V75743, VIN 1GCEC14W9XE183297.

OVERHEAD BRIDGE CRANES

PHILADELPHIA TRAMRAIL 7-1/2 T. X 25' SPAN, 64' runway travel, free standing on (2) sides and bldg. mtd. on (1) side, radio controlled, aux. pendant, 3-way pwr. motion, center drive, dbl. girder, top running.

PHILADELPHIA TRAMRAIL 7-1/2 T. CAP., 23'W. x 99'L., fabricated steel suppt.

**DAY 1: WEDNESDAY, NOVEMBER 2
10:00 A.M. • LIVE WEBCAST ONLY
(NO ONSITE BIDDING)**



2017

3,683
H.O.M.

KALMAR OTTAWA SPOTTING TRUCK



CONDOR SELF-PROPELLED BOOM LIFT



2,297
H.O.M.

BRODERSON 17,000-LB. CAP. MDL. IC-80 CARRY DECK CRANE



2022

2,244
MILES

2022 CHEVROLET 2500HD 4X4 PICKUP TRUCK



2
AVAILABLE

PHILADELPHIA TRAMRAIL 7-1/2 T. OVERHEAD BRIDGE CRANE SYSTEM



3
AVAILABLE

2018

TAYLOR DUNN "TIGER" LPG TUGGERS



CATERPILLAR 15,500-LB. BASE CAP. FORKLIFT



RICO 15,000-LB. ELECTRIC PLATFORM TRUCKS

**DAY 1:
WED.,
NOV. 2
10 A.M.**



SAMPLE VIEW OF TOYOTA ELECTRIC FORKLIFTS

**5
AVAILABLE**

LPG FORKLIFTS

CATERPILLAR 15,500-LB. BASE CAP. MDL. G70K, LPG pwrtd., 15,500-lb. cap. @ 24" L.C., side shift, currently eqpd. w/60" carpet mandrel, S/N AT8900362.

TOYOTA 7,000-LB. BASE CAP. MDL. 52-6FGCU35-BCS, LPG pwrtd., 7,000-lb. cap. @ 24" L.C., 9,248 H.O.M., S/N 61877.

YALE 5,500-LB. BASE CAP. MDL. GLC060VXNVSE085, LPG pwrtd., 5,500-lb. cap. @ 24" L.C., 165" max. lift, side shift, pwr. forks, load grate, dock lights, solid tires, 2,770 H.O.M., S/N A910V06500D.

ELECTRIC FORKLIFTS

TOYOTA 4,600-LB. BASE CAP. MDL. 5FBCU25, 4,600-lb. cap. @ 24" L.C., 189" max. lift, side shift, 48 v., S/N 64874.

TOYOTA 3,300-LB. BASE CAP. MDL. 30-7FBCU20, 3,300-lb. cap. @ 24" L.C., 198" max. lift, side shift, 48 v., S/N 60533.

TOYOTA 3,200-LB. BASE CAP. MDL. 5FBCU15, 1,200-lb. cap., 48 v., 78" mandrel, solid tires, S/N 62329.

TOYOTA 3,000-LB. BASE CAP. MDL. 5FBC15, 1,100-lb. cap. w/109" carpet mandrel, cushion tire, 48 v., S/N 10451.

TOYOTA 2,800-LB. CAP. MDL. 7FBEU15, 2,800-lb. cap. @ 24" L.C., 131" lift ht., side shift, load grate, dock lights, solid tires, S/N 12853.

ELECTRIC PLATFORM TRUCKS

(3) RICO 15,000-LB. CAP. MDL. PLR-DD-AR-150, 36 v., 104"L. x 36"W. lift platform, S/N R14606, S/N R13374, S/N R12254.

(3) SCHRECK 10,000-LB. CAP. MDL. WHSP-AR, stand-up operation, 102" x 36" lift platform, 24 v., S/N 16052, S/N 16497, S/N 16053 (out of service).

BATTERY HANDLING & CHARGING

SACKETT SYSTEMS MDL. B-AWC FORKLIFT BATTERY WASHER, 2,171 operating hours, S/N 20013752.

BATTERY CHARGE AND STORAGE SYSTEM INCL.: Sackett Systems Hydra Handler battery handler, (18) stations for 48 v. batteries, (8) Hawker, new 2020, (9) Hawker Mdl. PTOM3-48C-180Y Mod 3 chargers.

MATERIAL HANDLING & SHOP SUPPORT EQUIP.

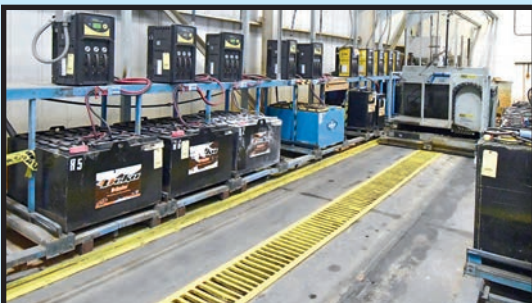
(3) 20' BIG ASS FANS; CRAM-A-LOT MDL. DBR-42-LU HYDRAULIC BALER, new 2002, S/N BD11388-01; **(500) NEW 42" X 48" PALLETS**, w/1/2" OSB top; (230+) material storage bins; **GIRO-LIFT 18,000-LB. CAP. MDL. HT4-18000 VEHICLE LIFT**, load ramps, S/N 4-1802001; **FAIRBANKS 5,000-LB. CAP. WEIGH SCALE**, 60" platform, digital counter box; **SOUTHWORTH COIL TIPPER APPROX. 5,000-LB. CAP. TURNOVER**, 60" x 60" platform; **(3) SOUTHWORTH 3,600-LB. CAP. MDL. PP360-AIR ROTATING PLATFORM PNEUMATIC LIFTS**, 48" dia. rotating platform; **WIDE SELECTION OF SELF-DUMPING HOPPERS; (2) DETROIT HOISTS 7-1/2 T. CAP. CRANE HOIST AND TROLLEY**, integrated sgl. beam trolley and hoist, Festoon and pendant control; **(2) P&H 7-1/2 T. CAP. UNITIZED HOIST AND TROLLEYS**, wireless control, roll handler; **(3) 15,000-LB. CAP. ROLL SPREADER BARS**, dual entry, 12"W.; **BUSHMAN 7-1/2 T. SPREADER BAR, CONFINED SPACE EMERGENCY RESCUE BOX**, w/air tanks, hoist equipment, personnel hoists, lockout tagout cables, gloves, knee pads, etc.; **GIVES HYDRAULIC DRUM CRUSHER; ROLLED MATERIAL TRANSPORT FRAMES; KONE 3-TON HOISTS AND TROLLEY UNITS AND MORE.**



CRAM-A-LOT HYDRAULIC BALER



GIVES HYDRAULIC DRUM CRUSHER

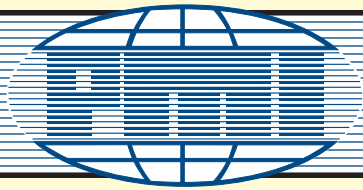


BATTERY CHARGING AND HANDLING SYSTEM



OVER 200 MATERIAL TRANSPORT SKIDS

**DAY 1:
LIVE
WEBCAST
ONLY
(NO ONSITE
BIDDING)**



AUCTIONS

**3
DAYS**

**DAY 2 & DAY 3: THURSDAY & FRIDAY,
NOVEMBER 3 & 4—TIMED ONLINE ONLY
BIDS START CLOSING AT 10:00 A.M. EACH DAY**

MRO STORES

UNPRECEDENTED OFFERING OF NEW AND REBUILT MRO ITEMS, INCL.:

ELECTRICAL: 100's of new and rebuilt electric motors from fractional HP to 250 HP incl. variable frequency drives, large selection of programmable controllers and replacement boards, 1,000's of electrical repair items: contactors, solenoids, disconnect switches, relays, push buttons, fuses, seal-tite and fittings, wire, terminals, connectors; large qty. of wire; Greenlee power conduit benders; condulets; hand conduit benders;

HYDRAULICS: pumps, power supplies, fittings, hoses, crimping equipment, regulators, directional valves, quick connectors, filters, braided stainless hoses, Ridgid pipe threaders.

PNEUMATICS: fittings of all types, new hose, solenoids, filters, moisture traps, valves.

MECHANICAL: gearboxes, gears and sprockets, roller chain, huge assortment of bearings and pillow blocks, fasteners, timing and vee belting and pulleys, huge assortment of rubber and plastic conveyor belting, idler and drive belt pulleys, crusher parts, new bronze bearing stock.

BLOWERS AND PUMPS: new and rebuilt positive displacement blowers, split-case pumps, impellers, new high-capacity sump pumps.

VARIABLE FREQUENCY DRIVES

ALLEN BRADLEY POWERFLEX, Catalog No. 20F1AND415ANONNNN (new).

(3) WESTINGHOUSE LOW VOLTAGE AC POWER CIRCUIT BREAKERS, 1,600-amp frame type DS-416 (new).

MOTOR CONTROL CENTERS

CONSISTING OF: (8) Square D 1,600 amp low voltage power circuit breakers, Square D Power-cast II cast coil dry type transformer, Square D HVL load current interrupter switch.

ALLEN BRADLEY CENTERLINE, 1,600 amp, large qty. of circuit breakers and Power Logic circuit monitor.



HIGH QUALITY SWITCHGEAR



NEW ALLEN BRADLEY VARIABLE SPEED DRIVE



HOT OIL PUMPS



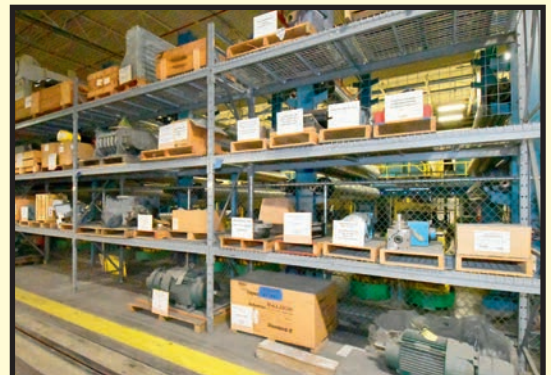
HUGE ASSORTMENT OF MRO ITEMS



NEW CIRCUIT BREAKERS



HUGE ASSORTMENT OF NEW AND REBUILT MOTORS



MOTORS, GEARBOXES AND BLOWERS

TIMED ONLINE AUCTION



GREENLEE POWER CONDUIT BENDER



1,000+ SECTIONS OF TEARDROP PALLET RACKING

TEARDROP PALLET RACKING

(OVER 1,000) SECTIONS 48"D. X 25'H., approx. 15,000 crossbeams, wire and wood decking.

(50) SECTIONS 48" X 20' X 8', w/wire decking.

POWER TOOLS

GREENLEE 1/2" TO 2" ELECTRIC CONDUIT BENDER, running gear, S/N PL-33073-PJ; **FORGED C-CLAMPS**; **MECHANICS TOOLS** w/tool bags; **SQUARES**; **NUT DRIVERS**; **SPANNER SOCKET DRIVERS**; **HEX WRENCHES**; **COMBINATION WRENCHES** up to 2"; **CHANNEL LOCKS**; **RETAINING RING PLIERS**; **1/2" DRIVE SOCKETS**; **PRY BARS**; **SOFT BLOW AND SLEDGE HAMMERS**; **PIPE WRENCHES** up to 48" Ridgid H.D.; **ALUMINUM RIDGID PIPE WRENCHES** up to 36"; **ADJUSTABLE WRENCHES**; (2) **DILLON DYNAMOMETER 20,000-LB. CAP. CRANE SCALES**; **LEVER HOISTS**; **ENERPAC HAND HYDRAULIC UNITS AND ASSORTED JACK ENDS**; **WHEEL PULLERS**; **GEAR PULLERS**; **SKF BEARING PULLER SET**; **SKF SLIDE EZ-LOCK BEARING PULLER SET**; **GEAR PULLERS**; **GREASE GUNS**; (10) **HEAVY HAUL INTERNATIONAL H.D. MACHINE SKATES**; **DEWALT BATTERY POWERED TOOLS** incl. screw guns, reciprocating saws, nut drivers; **MILWAUKEE FUEL BATTERY POWERED TOOLS** incl. impact wrenches, screw guns, grease guns, vacuum set; **IMPACT WRENCHES**; **RIGHT ANGLE SOCKET WRENCHES**; **RIGHT ANGLE DRILLS**; **INGERSOLL RAND 1" PNEUMATIC IMPACT WRENCH**; **DIE GRINDERS**; **FAN**; **RIGHT ANGLE GRINDER**; **FLASHLIGHT**; **LARGE 3/4" DRIVE TORQUE WRENCHES**; **DEWALT COMPOUND MITER SLIDING SAW**; **MAGNETIC BASE DRILLS**; **SKIL BAND SANDERS**; **ELECTRIC PAD SANDERS**; **6" RIGHT ANGLE GRINDERS**; **EVOLUTION METAL CUTTING CHOP SAW**; **HAMMER DRILLS** by Makita, Dewalt and Bosch; **SKIL SCROLL SAW**; **DIAMOND CONCRETE SAW**; **PORTA BANDS**; **SKIL 3/4" H.D. DRILL**; **WORM DRIVE CIRCULAR SAW**; **NORBAR PNEUMATORQUE PNEUMATIC TORQUE WRENCH**; **ROLLER DRAWER TOOLBOXES**; **JACK STANDS**; **FLOOR JACK**; **BATTERY CHARGERS**; **RIDGID PORTABLE PIPE THREADING EQUIPMENT**; **HYDRAULIC ENGINE LIFT**; **DUMONT MINUTEMAN BROACH SETS** w/bushings.

MISCELLANEOUS SHOP & WAREHOUSE EQUIPMENT

PORTABLE EXTENDABLE STAIRWELL, all alum. construction, 3-wheel design, approx. 20' max. ht., hand winch, safety cage; **LARGE SELECTION OF STEPLADDERS** from 3'-8' ht. incl. extendable step ladder; **36" AIR CIRCULATOR**; **DAYTON 48" AIR CIRCULATOR**.

LOCATED OFFSITE UNUSED CHAIN DRIVEN LIVE BOWTIE ROLLER CONVEYOR

OMNI MDL. CDLR-26, 24' long, 24" effective width, 2-9/16" x .180" wide rollers on 9" centers, milled urethane "BOWTIE" covering over rollers, 3/4 HP 230/460 VAC/3PH/60HZ Baldor motor, 30 FPM max. spd. (See auction catalog for more details and photos.) This item located at Cardinal Conveyor, 314 Wallace Drive, Coldwater, MS 38618. Inspection (and removal) by appointment only. Contact: Toll Free: 877-233-2618/ Phone: 662-233-2273.



MILWAUKEE "FUEL" BATTERY POWERED TOOLS



DEWALT BATTERY AND PLUG-IN POWER TOOLS



LARGE TORQUE WRENCHES

CAFETERIA EQUIPMENT

ASSORTED AMANA COMMERCIAL MICRO-WAVES; **SCOTCHMAN MDL. HID540A-1A ICE AND WATER MACHINE**; (6) **CAFETERIA FOLDING TBL.S.**; **TRUE MFG. 3-COMPARTMENT REFRIGERATOR**.



ROLLER DRAWER STORAGE CABINET



36" AIR CIRCULATOR



PORTABLE ALUMINUM STAIRCASE



TRUE 3-COMPARTMENT REFRIGERATOR

**DAY 2 & DAY 3:
THURSDAY & FRIDAY,
NOVEMBER 3 & 4
TIMED ONLINE ONLY
BIDS START CLOSING
AT 10:00 A.M.**



SPECTROPHOTOMETERS



HUGE ASSORTMENT OF LABORATORY AND TEST EQUIPMENT



GRIEVE CABINET OVEN

SPECTROPHOTOMETERS

(2) X-RITE, w/Dell computers; COLE PARMER MDL. S2150UV, S/N KPX16031601042.

LABORATORY & TEST EQUIPMENT

GRIEVE MDL. 343 CABINET OVEN, 6.6 kW, 400 deg. max. temp., stainless steel lined, 36"W. x 48"D. x 36"H., stainless steel shelves, S/N 119656A0417.

(2) HOT PACK SUPERMATEC LABORATORY OVENS, 600 deg. F. max. temp.

VINYL INSPECTION MACHINE, w/CCD camera, grid replacement glass.

MEIJI CCTV INSPECTION MACHINE, w/screens and readouts.

(2) CUSTOM SCIENTIFIC INDENT MACHINES; PERKIN ELMER MDL. 8500 GAS CHROMATOGRAPH; ASSORTED HEWLETT PACKARD OSCILLOSCOPES AND ELECTRONIC TEST GEAR; PASAR AMP PROBE; INFICON GAS MATE; TEKTRONIX OSCILLOSCOPE; HONIGMANN DIGITEN 485 ROLL CHECKER; MICRO 15 NOISE DOSIMETER; VARIOUS RAYTEK OPTICAL TEMPERATURE PROBES; CA-CALC MDL. CA6203 COMBUSTION ANALYZER; OLYMPUS COLOR 3 BINOCULAR MICROSCOPE w/4-lens turret; DOTLINE LASER PULLEY ALIGNMENT TOOL; FLIR THERMACAM EX320 THERMO CAMERA; ASSORTED FLUKE MULTI-METERS; VISUAL AB SCAN THICKNESS GAUGE; SONAVU LEAK MANAGEMENT SYSTEM w/SDT leak checker and readout; FLUKE MDL. 435 DIGITAL POWER QUALITY ANALYZER; FLUKE MDL. 43 DIGITAL POWER QUALITY ANALYZER; SDT NOISE ANALYZER; MICRON MDL. M310 BLACK BODY CALIBRATION SOURCE; ASSORTED CCTV CAMERAS; FLUKE MDL. 1550B MEGA OHM METER; SEAFORD INDUSTRIAL ROLL CHECK SYSTEM; SEVERAL BRANSON TRANSITS w/(2) tripods; ALBION DIGITAL ROLL SNAP GAUGE; HOT PACK MDL. 434304 MULTI-MODE THERMAL CONTROL SYSTEM TEMPERATURE HUMIDITY CHAMBER; EASY LASER SHAFT ALIGNMENT SYSTEM; COMTEN INDUSTRIES TENSILE TESTER; CARVER MDL. C LABORATORY PRESS; FLUKE MDL. 725 MULTI-FUNCTION PROCESS CALIBRATOR; EASTERN TECHNICAL ASSOCIATES VISIBLE EMISSIONS OBSERVER SET; (2) HOT PACK SUPERMATIC OVENS; HOCKMEYER MDL. 2L MIXER, S/N 876178; WERNER MATHIS MDL. LTF113587 CONVEYORIZED OVEN; (2) FUME HOODS; YOKOGAWA SCOPE QUARTER MULTI-INPUT RECORDER; VIBRATION AND TEMPERATURE SENSORS (64) Banner DX80N9Q45U; (64) Banner QM42VT1, (4) Banner DX80 900 MHz SureCross DX80 wireless gateways.



HOTPACK CABINET OVEN



SUPERMATIC CABINET OVEN



FLUKE POWER QUALITY ANALYZER



ULTRASOUND ACOUSTIC IMAGING CAMERA



SEAFORD ROLL CHECKER



HONIGMANN DIGITEN 485 ROLL CHECKER

PARTIAL TERMS & CONDITIONS:

An 18% Buyer's Premium Will Apply.

Everything will be sold to the highest bidder or bidders for cash in accordance with the auctioneer's Customary Terms of Sale, copies of which will be posted on our website.

ALL PAYMENTS MUST BE MADE BY CASHIER'S CHECK, WIRE TRANSFER OR COMPANY CHECK WITH BANK LETTER GUARANTEEING PAYMENT TO PLANT & MACHINERY INC.

Here is an example of what your letter should be: Mr. "Customer Name" is a customer of this bank. This bank will guarantee unqualified payment to PMI on the account listed herein up to the amount of \$_____. This letter is good until December 5, 2022.

In default of payment of bills in full within the time therein specified, the Auctioneer in addition to all other remedies allowed by law, may retain all monies received as deposit or otherwise, as liquidated damages. All items must be removed by the time announced at the start of the sale.

Lots not paid for and/or removed within the time allowed may be resold at public or private sale without further notice, and any deficiency, together with all expenses and charge of resale, will be charged to the defaulting purchaser.

The buyer acknowledges that he or an agent has inspected all of the assets upon which he will be bidding and/or does purchase.

Buyer agrees to accept assets purchased "AS IS," WITH "ALL FAULTS"

AND "WITH REMOVAL AT BUYER'S RISK AND EXPENSE." THE AUCTIONEER EXPRESSLY DISCLAIMS ON THE PART OF THE AUCTIONEER AS AGENT AND THE SELLER, ANY WARRANTY AS TO FITNESS OR USABILITY OF ALL THE ASSETS, AND THE BUYER EXPRESSLY WAIVES ANY CLAIM IN RESPECT TO ANY POSSIBLE FUTURE USE OF ANY ASSET PURCHASED FOR ANY PURPOSE WHATSOEVER.

The buyer does hereby assume and does agree to indemnify and hold the auctioneer harmless from any future claim which shall pertain to the fitness or use of that asset as being purchased. Riggers, movers, electricians and buyers performing work at the Auction Site must provide PMI with evidence of insurance. The insurance coverage must be at a level acceptable to PMI and to the seller. PMI reserves the right to withdraw items, alter the order of the sale, accept bids from the seller, and group lots as it may deem appropriate. This auction may include consignment items.

Although all information has been obtained from sources deemed reliable, the auctioneer and seller make no warranty or guarantee, expressed or implied, as to the accuracy of the information herein contained, or contained in our catalog. It is for this reason that buyers should avail themselves of the opportunity to make inspection prior to the auction. Although it is not likely, auction sales are subject to cancellation or postponement. Kindly contact auctioneer prior to attendance.

These terms and conditions may be modified or supplemented by language in the catalog available at the sale site or by announcement at the start of the sale. Bidders should be attentive to those announcements and to the catalog language.

ONLINE REGISTRATION AT

BidSpotter DAY 1, 2 & 3
proxibid. DAY 1 ONLY

1. Use the [link](#) on PMI's website calendar. [www.pmi-auction.com](#) for your chosen bidding platform. **DO IT NOW!**
2. This auction will require a Cash, or credit card, or debit card, 100% refundable deposit. If by credit or debit card, it can be added through the (Bidspotter.com or Proxibid.com for DAY 1 ONLY) fully secure and PCI compliant registration process and will be assessed a 100% refundable \$3,000 (US Bidder) or a \$10,000 (Foreign Bidder) deposit in order to be approved to bid online with this auction. Cash deposits can be made by wire transfer. **DON'T WAIT.** If you are unsuccessful in the auction, the refund of your credit/debit card deposit will occur within 24 hours. Cash deposits will be expedited as well.

If you need assistance, don't hesitate to call (713) 691-4401.

ALL BIDS ARE SUBJECT TO AN 18% BUYER'S PREMIUM.

PLANT & MACHINERY INC.
AUCTIONEERS • APPRAISERS • LIQUIDATORS • REAL ESTATE

P.O. Box 218568
Houston, TX 77218-8568

DATED MATERIAL - PLEASE DELIVER

**HUGE 3-DAY AUCTION
OF A VINYL SHEET
FLOORING FACILITY**

FEATURING: 170" WIDE KOCHSIEK (BOBST) 8-COLOR ROTOGRAVURE PRINTING LINE; 168" OLBRICH COATING & FUSION LINE; INK MIXING FACILITIES; (3) THERMAL OXIDIZERS; AUTOMATIC ROLL SLITTING & TRIMMING EQUIP.; ROLL PACKAGING; LARGE CAP. SHREDDING SYSTEMS; BULK MATERIAL STORAGE & HANDLING; MAINTENANCE TOOLROOM; LAB & Q.C. EQUIP.; HUGE ASSORTMENT OF MRO COMPONENTS; 1,000'S OF PALLET RACKS; LATE MODEL FORKLIFTS & TUGGERS; 2017 SPOTTING TRUCK; 2020 CHEVY 2500 CREW CAB PICKUP; **PLUS TREMENDOUS SCRAP OPPORTUNITY & MUCH MORE!**

DAY 1: WED., NOV. 2 • 10:00 A.M. • LIVE WEBCAST ONLY
**DAY 2 & DAY 3: THURS. & FRI., NOV. 3 & 4
10:00 A.M.—TIMED ONLINE ONLY**

**PUBLIC
AUCTION**



**ATTENTION: PLANT MANAGER
OR EQUIPMENT BUYER**

Presorted
First Class Mail
U.S. Postage
PAID
Eugene, Oregon
Permit No. 17

3-DAY AUCTION
**ASSETS LOCATED IN
STILLWATER, OKLAHOMA**



2017

ACCU-CUT MDL Q9 CARPET AND VINYL CUT AND ROLL MACHINE



SOUTHWORTH HYDRAULIC TIPPER



HIGH QUALITY SWITCHGEAR



UNUSED

2022

ATLANTA ATTACHMENT CO.
MATERIAL SLITTER



SKYJACK SELF-PROPELLED SCISSOR LIFT



**2,297
H.O.M.**

BRODERSON 17,000-LB. CAP. MDL IC-80 CARRY DECK CRANE

**3
DAYS**

DAY 1: WEDNESDAY, NOVEMBER 2 • 10:00 A.M. • LIVE WEBCAST ONLY
DAY 2 & DAY 3: THURS. & FRI., NOV. 3 & 4 • 10:00 A.M.—TIMED ONLINE ONLY



OLBRICH COATER



SPLICING TABLE



INFRARED HEATER



DELIVERY SYSTEM



HONEYWELL MEASUREX

FOR BIDDING AT THIS AUCTION. Go to www.pmi-auction.com and click on the calendar page for link to online bidding platforms for this auction.

Just Added to November 2 Auction **at ARMSTRONG FLOORING, STILLWATER:** **OLBRICH 169" W. GEL COATING LINE**

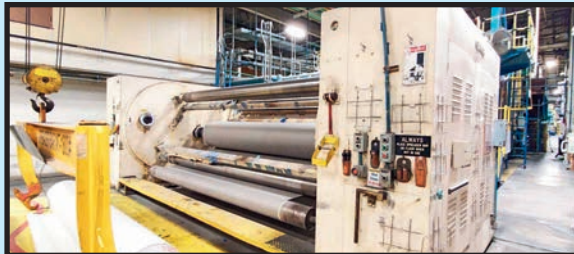
OLBRICH GEL COATING LINE: consisting of the following components: 169"W. x 15,000 dual unwind stand; 26-pass unwind accumulator; (2) Honeywell Mdl. 2084 base weigh scanners; infrared heating stand; Olbrich reversible coating stand; gel delivery system w/stainless hoppers, mixers and tubs; hot oil system; hot oil drumming stand; (6) roll cooling stands; Futec "Max Eye" defect scanner; 26-pass rewind accumulator; 52" dia. x 15,000-lb. dual turret rewriter. (NOTE: this line will be offered as individual components, and, as a complete line.)



OLBRICH COATER



UNWIND ACCUMULATOR



DUAL TURRET REWINDER



UNWINDER



DEFECT DETECTION



HONEYWELL MEASUREX

Sale Conducted By: **PLANT & MACHINERY INC.**
AUCTIONEERS • APPRAISERS • LIQUIDATORS • REAL ESTATE
1304 Langham Creek Drive, Suite 454, Houston, Texas 77084
PHONE: (713) 691-4401 FAX: (713) 672-7905
E-MAIL: pmi@pmi-auction.com • WEBSITE: www.pmi-auction.com
HOUSTON • DALLAS • ST. LOUIS

In Conjunction With:

 **Gordon Brothers**
1903