

# AUCTION

**15 LOCATIONS: TEXAS & TENNESSEE**

Featuring: CNC & Manual Machine Tools & Fabricating Equip.; Forklifts; MORE!



MAZAK INTEGREGX MDL 400-IV CNC MULTI TASKING MACHINE

2007



O-M MDL NEO 35SX CNC VERTICAL BORING MILL

FOR SALE BY PRIVATE NEGOTIATION

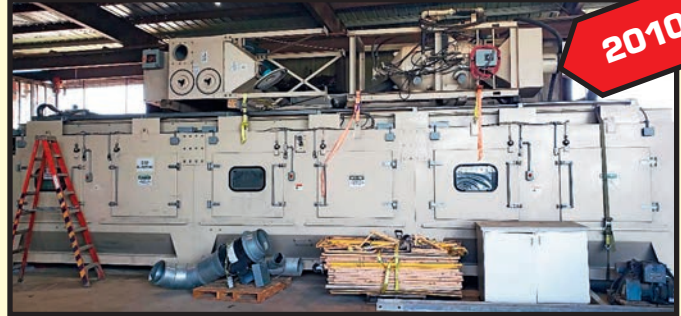
2014

**WEDNESDAY, AUGUST 30  
10:00 A.M.  
LIVE ONLINE WEBCAST ONLY  
(NO ONSITE BIDDING)**

**INSPECTION:** Varies By Location.  
See Inside for Details.

**18% BUYER'S  
PREMIUM  
WILL APPLY**

**LIVE ONLINE BIDDING ONLY (NO ONSITE BIDDING):** YOU MUST REGISTER IN ADVANCE FOR ONLINE BIDDING AT THIS AUCTION.  
Go to [www.pmi-auction.com](http://www.pmi-auction.com) and click on **BidSpotter** or **proxibid** on our calendar page for this auction sale.



EMPIRE SPCL535-P ROTATING PRESSURE BLAST SYSTEM

2010



MULTICAM 10' X 20' CNC PLASMA, OXY AND MILLING MACHINE

2014



MAZAK QTN 450-II M CNC LATHE

2007

Sale Conducted By:

**PLANT & MACHINERY INC.**  
AUCTIONEERS • APPRAISERS • LIQUIDATORS • REAL ESTATE

Ron Moore, TX Lic. #7314  
**HOUSTON • DALLAS • ST. LOUIS**

Headquarters:  
1304 Langham Creek Drive, Suite 454  
Houston, Texas 77084

PHONE: (713) 691-4401

FAX: (713) 672-7905

E-MAIL: [pmi@pmi-auction.com](mailto:pmi@pmi-auction.com)  
WEBSITE: [www.pmi-auction.com](http://www.pmi-auction.com)

# PMI AUCTION

**WEDNESDAY, AUGUST 30  
10:00 A.M.**

**LIVE ONLINE WEBCAST ONLY (NO ONSITE BIDDING)**

**2007**



**MAZAK INTEGREX MDL. 400-IV CNC MULTI TASKING MACHINE**

**2007**



**MAZAK NEXUS MDL. 510C/50-II VERTICAL MACHINING CENTER**

## LOCATION 1

Surplus to the Ongoing Operations of  
**FABCORP, INC.**

**6951 WEST LITTLE YORK,  
HOUSTON, TEXAS 77040**

**INSPECTION:** Monday & Tuesday, August 28 & 29 by  
Appointment Only. Contact Jeff Niemann at (832) 309-4087  
for Appointment.

## CNC MULTI TASKING MACHINE

**MAZAK INTEGREX MDL. 400-IV**, new 2007, Mazatrol Matrix control, 30" max. turning dia., 59" max. turning length, 4.4" bar cap., 40-pos. turret, S/N 195307.

## VERTICAL MACHINING CENTER

**MAZAK NEXUS MDL. 510C/50-II**, new 2007, Mazatrol Matrix Nexus control, 41.34" X, 20.08" Y, 23.03" Z-axis travel, 24-pos. ATC, S/N 193616.

## PORTABLE 3D MEASURING ARMS

**FARO GAGE PLUS**, new 2020, S/N F04-02-07-05702.

**FARO GAGE PLUS**, new 2018, S/N F04-02-07-05729.

## HORIZONTAL BANDSAW

**KALAMAZOO 9" X 18"**.

## WELDING MACHINES

**(3) LINCOLN MDL. FLEXTech 450**, new 2011, w/Lincoln double header DH-10, S/N U1110808827, S/N U1110204591, S/N N/A.

**LINCOLN MDL. POWER WAVE 355**, new 2008, w/Lincoln Power Feed 10M double header wire feeder, S/N U1080605693.

**LINCOLN MDL. CV-300**, w/Lincoln 7 wire feeder, S/N U1970209266.

**LINCOLN MDL. IDEALARC R3R-500**, S/N U1000631150.

**FRONIUS MDL. TRANSPULS SYNERGIC 4000 MIG WELDER**, S/N 17251613.

**LIVE ONLINE BIDDING ONLY (NO ONSITE BIDDING): YOU MUST REGISTER IN ADVANCE FOR ONLINE BIDDING AT THIS AUCTION.** Go to [www.pmi-auction.com](http://www.pmi-auction.com) and click on **BidSpotter** or **proxibid** on our calendar page for this auction sale.

## 15 LOCATIONS: TEXAS & TENNESSEE

**Featuring: CNC & Manual Machine Tools & Fabricating Equip.; Forklifts; MORE!**



**(1 OF 2) FARO GAGE PLUS  
MEASURING ARMS**



**FLEXTech 450  
DOUBLE HEAD WELDER**



# PMI AUCTION

**WEDNESDAY, AUGUST 30  
10:00 A.M.**

**LIVE ONLINE WEBCAST ONLY (NO ONSITE BIDDING)**



**VERNER MDL. V-8000 WELDING POSITIONER**



**KEC MDL. FT-400 WELDING FLAT TURNTABLE**



**WELD PLUS MDL. WPI-2000 TURNING ROLL DRIVER**

**15 LOCATIONS: TEXAS & TENNESSEE**

**Featuring: CNC & Manual Machine Tools & Fabricating Equip.; Forklifts; MORE!**

## LOCATION 1, CONTINUED

Surplus to the Ongoing Operations of

**FABCORP, INC.**

**6951 WEST LITTLE YORK, HOUSTON, TEXAS 77040**

INSPECTION: Monday & Tuesday, August 28 & 29 by Appointment Only.

Contact Jeff Niemann at (832) 309-4087 for Appointment.

### PLASMA CUTTING SYSTEMS

THERMAL DYNAMICS CUTMASTER 52, new 2013, S/N MX1206015715.

THERMAL DYNAMICS MDL. PAKMASTER 50XL PLUS, S/N 00563874.

### WELDING FLAT TURNTABLE

KEC MDL. FT-400, 20 T. cap., 60" dia. tbl., S/N 82813.

### TURNING ROLL SETS

WELD PLUS MDL. WPI-2000, 2,000-lb. cap.; CUSTOM 2,000-LB. CAP. DRIVER AND IDLER; ADJUSTABLE DRIVER AND IDLER, 2"- 24" range of working dia., 2,200-lb. cap.

### WELDING POSITIONER

VERNER MDL. VD-8000, new 2014, 8,000-lb., cap., S/N X80003.

### CHILLERS

MILLER COOLMATE, S/N LH390254F; BEST WELDS, S/N LK450164F; ITW COOLING SYSTEM.

### SHOP SUPPORT EQUIPMENT

(4) ROLLER V-STANDS, 1,760-lb. cap., 26"- 42" ht. range; STEPHEN BADER BELT SANDER; PALLET OF LIFT CHAINS.

### BACKUP GENERATOR

HIPOWER 165 KW, John Deere diesel engine, 120-240 v./277-480 v.

### ROTARY SCREW AIR COMPRESSORS

INGERSOLL RAND MDL. SSREP100, 100 HP compact (no controller), S/N CK7442U03305.

(2) INGERSOLL RAND MDL. IRN100H-CC, 100 HP, S/N NV8412U08233, S/N NV8879U10269.

### REFRIGERATED AIR DRYERS

INGERSOLL RAND MDL. DXR100, 100 CFM.

INGERSOLL RAND MDL. NVC700A400, 400 CFM, S/N 309312.

**LIVE ONLINE BIDDING ONLY (NO ONSITE BIDDING): YOU MUST REGISTER IN ADVANCE FOR ONLINE BIDDING AT THIS AUCTION. Go to [www.pmi-auction.com](http://www.pmi-auction.com) and click on**

**BidSpotter or proxibid on our calendar page for this auction sale.**

## LOCATION 2

Assets Located at  
**BLUE STEEL TOOL, INC.**  
2309 N. 5TH ST.,  
UNION CITY, TENNESSEE 38281

INSPECTION: Monday & Tuesday, August 28 & 29  
by Appointment Only.

Call Richard Davidson at (731) 885-2404 for Appointment.

### HORIZONTAL EJECTOR DRILL

**NATCO**, 30 HP spdl. head drive, (2) roller drill supports., 16" dia. 3-jaw pressure head, 16" dia. 3-jaw drive chuck, approx. 60" drill stroke, high cap. coolant system w/cartridge filter, belt style chip conveyor, 30 HP high cap. coolant pump, (14) BTA style drilling mandrels, Allen Bradley Panelview PLC digital spdl. RPM load and coolant RPM, feed IPM, feed load % digital indicators, pwr. headstock traverse w/gear motor drive, spare headstock, spare roller tool support.

### MISCELLANEOUS

LOT OF GUN DRILLS.



NATCO HORIZONTAL EJECTOR DRILL

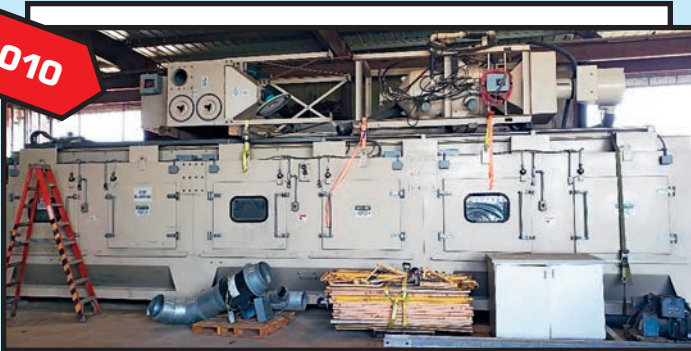
SAMPLE  
VIEW OF  
GUN  
DRILLS



## LOCATION 3

EQUIPMENT RECENTLY REMOVED IN THE  
DECOMMISSIONING OF A LOCAL PRAXAIR PLANT

2010



### LARGE CAPACITY GRIT BLASTING SYSTEM W/PARTS ROTATOR

**EMPIRE MODEL #SPCL535-P PRESSURE BLAST SYSTEM W/HORIZONTAL OSCILLATION**, new 2010. incl.: heavy duty blast enclosure, 5'D x 35'W, 1/4" thick steel; lathe type part rotator w/fixed head stock/movable tail stock (to facilitate cleaning mud motors and other long screw type parts); powered in/out drawer for lathe type part rotator; (8) swing type maintenance access doors in rear. system upgrades: dual chamber continuous-acting pressure vessel w/6" dia. rigid urethane duct; 2-screen classifier w/structural frame; 36" dia. powered position tailstock; (4) fixed nozzles on horizontal oscillator; S/N E10017. (loaded onto customer supplied truck(s) at no charge).

Stored in the Warehouse of

## LIBERTY PLANT MAINTENANCE

1825 COUNTY RD. 614, DAYTON, TEXAS 77535

INSPECTION: Monday & Tuesday, August 28 & 29, 9:00 A.M. to 3:00 P.M. For any questions contact Linda at (936) 681-8353.



### NATURAL GAS-POWERED BACKUP GENERATOR

**WAUKESHA 500 K.V.A. "ENGINATOR" MDL. E532**, 400 kW, 0.8 pwr. factor, 3-phase/60 cycle, 1,200 RPM, 480 v., 602 amps, Spec. No. L400GU, S/N RU14056. Square D disconnect switch-gear. Boltswitch Mdl. EVL3612-12-S6-C, 3,000 amp, 480V/277AC 3-pole 4-wire bolted pressure contact switch. (loaded onto customer supplied truck at no charge).



**KURAKI MDL. KV-2000 VERTICAL MACHINING CENTER**



**KURAKI MDL. KV-700 VERTICAL MACHINING CENTER**



**CLEEREMAN DRILL PRESS**

**LOCATION 4**  
**JMT STORAGE FACILITY**  
**10171 OLGA LANE, HOUSTON, TEXAS 77041**  
 INSPECTION: By Appointment Only.  
 Contact Robert Brundage at (713) 691-4401 for Appointment.

**VERTICAL MACHINING CENTERS**

**KURAKI MDL. KV-2000**, Fanuc 15M control, 4th axis, 86.68" x 27.56 tbl. size, 78.74" X, 31.5" Y, 29.92" Z-axis travels, 6,600-lb. tbl. load, 25 HP, CT-50 taper, 3 to 3,000 RPM, 32-pos. ATC, new 1991, S/N 2626.

**KURAKI MDL. KV-700**, Fanuc control, 39.37" x 18.11 tbl. size, 28.35" X, 15.75" Y, 19.69" Z-axis travels, 1,320-lb. tbl. load, 7.5 HP, ISO 40 taper, 50 to 5,000 RPM, 24-pos. ATC, new 1992, S/N 8500.

**OKK MDL. MCV-820**, Fanuc OM control, Koma 4th axis, 78.74" x 32.28" tbl. size, 63" X, 32.28" Y, 28.35" Z-axis travels, 5,500-lb. tbl. load, 25 HP, CAT 50 taper, 25 to 3,500 RPM, 30-pos. ATC, new 1996, S/N 444.

**HORIZONTAL MACHINING CENTERS**

**OKUMA MDL. MX-60HB**, OSP7000M control, 24.8" x 24.8" pallet size, 1 deg. Indexing, 39.4"-X, 31.5"-Y, 31.9"-Z axis travels, 2,600-lb. pallet load, CAT 50 taper, 50 to 5,000 max. RPM, 27 HP, S/N 0202.



**OKUMA MDL. MX-60HB HORIZONTAL MACHINING CENTER**

**4-AXIS CNC CHUCKER**

**NISSIN MDL. NST-30/125 2TSC**, Fanuc 11T control, 15.75" max. turning dia., 55.12 max. turning length, S/N N-3012.

**DRILL PRESS**

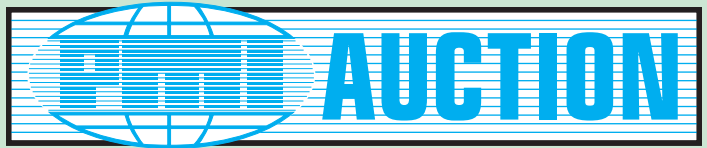
**CLEEREMAN MDL. 25DC**, 5 HP, w/compound tbl., S/N 60792.



**LOCATION 5**  
**FOR SALE BY PRIVATE NEGOTIATION**  
**8550 FAIRBANKS NORTH HOUSTON RD.,**  
**HOUSTON, TEXAS 77064**  
 Contact Robert Brundage at (713) 691-4401.

**CNC VERTICAL BORING MILL**

**O-M MDL. NEO 35SX**, 2014, Fanuc 31i-MODEL B control, 157.5" max. swing, 137.8" dia. tbl. w/(4) boring mill jaws, 133.86" max. turning ht. (high col-umn), 12-pos. ATC, Product No. MN147029, S/N MT1975.



**WEDNESDAY, AUGUST 30  
10:00 A.M.**

**LIVE ONLINE WEBCAST ONLY (NO ONSITE BIDDING)**



**HEATED PLATEN PRESS LINE**



**MORI SEIKI MDL. MV-55/50 VERTICAL MACHINING CENTER**



**KAFO MDL. VMC-2185T VERTICAL MACHINING CENTER**

## LOCATION 6

Surplus to the Ongoing Operations

### MSM MACHINE WORKS

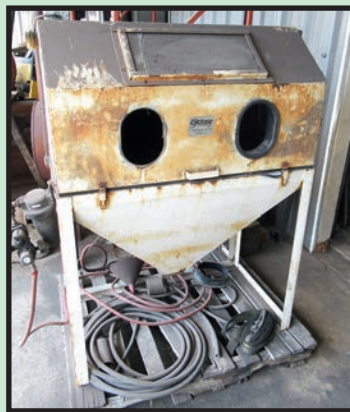
**14229 HERSE ST., HOUSTON, TEXAS 77015**

**INSPECTION: Monday & Tuesday, August 21 & 22 by Appointment Only.**

Contact Jerry Rangel at (713) 449-1903 for Appointment.



**BURR KING VIBRA KING 25 DEBURRING MACHINE**



**CYCLONE BLAST CABINET**

## VERTICAL MACHINING CENTERS

**KAFO MDL. VMC-2185T**, Fanuc series 15-M control, 94" x 39" tbl., 35" X, 30.4" Y, 31.5" Z-axis travels, 32-pos. ATC, S/N 24011.

**MORI SEIKI MDL. MV-55/50**, Fanuc 11-M control, 55" x 22" tbl., 41.3" X, 21.6" Y, 22" Z-axis travels, 30-pos. ATC, S/N 1064.

## HEATED PLATEN PRESS LINE

**75 HP HPU, w/tank, 7 total presses w/heated platens.**

## SHOP SUPPORT EQUIPMENT

**BURR KING VIBRA KING 25 DEBURRING MACHINE; CYCLONE BLAST CABINET.**

**LIVE ONLINE BIDDING ONLY (NO ONSITE BIDDING); YOU MUST REGISTER IN ADVANCE FOR ONLINE BIDDING AT THIS AUCTION.** Go to [www.pmi-auction.com](http://www.pmi-auction.com) and click on **BidSpotter** or **proxibid** on our calendar page for this auction sale.

**15 LOCATIONS: TEXAS & TENNESSEE**

**Featuring: CNC & Manual Machine Tools & Fabricating Equip.; Forklifts; MORE!**

## LOCATION 7

Surplus to the Ongoing Operations of  
**ATOMIC ALLOYS**  
10555 WEST LITTLE YORK RD.,  
HOUSTON, TEXAS 77041

**WEDNESDAY, AUGUST 30 • 10:00 A.M.**  
**LIVE ONLINE WEBCAST ONLY (NO ONSITE BIDDING)**

**15 LOCATIONS: TEXAS & TENNESSEE**



**SZEGVARI BATCH TYPE  
ATTRITOR SYSTEM**



**PARKER AIR REGULATOR**

### UNION PROCESS SZEGVARI BATCH TYPE ATTRITOR SYSTEM

UNION PROCESS SZEGVARI BATCH TYPE,  
SD 30 size, S/N 13041.

### WALK-BEHIND ELECTRIC FORKLIFTS

HYSTER MDL. W402, 4,000-lb. cap., S/N  
B218N24718K.

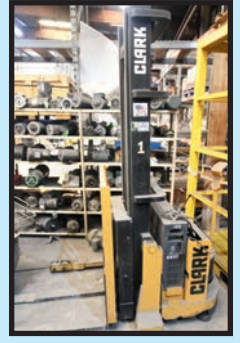
CLARK POWERWORKER MDL. SP-30,  
3,000-lb. cap.

### PAINT BOOTH

13'W. X 8'D. X 13'H., w/exhaust.



13'W. X 8'D. X 13'H.  
PAINT BOOTH W/EXHAUST



CLARK POWERWORKER  
3,000-LB. CAP. WALK-  
BEHIND ELECTRIC FORKLIFT



**KARCHER HEATER**



**FLOOR JACK**



**CRANE SCALE**



**INDUSTRIAL MIXER**

**INSPECTION:** Monday & Tuesday,  
August 28 & 29 by Appointment Only.  
Contact Ryan Voorhies at (281) 212-0173  
for Appointment.



**ELECTRIC MOTORS**



**STRONG ARM BOOM LIFT**



**DRUM LIFTER**

### HUGE QUANTITY OF MRO

ELECTRIC MOTORS, SOME NEVER USED;  
FANS; BLOWERS; MIXERS; OMEGASONICS UL-  
TRA SONIC EQUIPMENT; TRANSFORMERS;  
ELECTRIC SWITCHES; VARIABLE FREQUENCY  
DRIVES; HYDRAULIC PWR. UNITS; ELECTRIC  
FORKLIFT BATTERY CHARGERS; STRONGARM  
LIFTING ARM; BERNARD BOOM; LEON  
BARRETT CENTRIFUGE; PARKER AIR REGU-  
LATOR; SPX MARLEY CHILLER FAN; SULLAIR  
LS-16 COMPRESSOR; CONVEYORS; TURNING  
ROLLS; QC EQUIPMENT; DEBURRING MA-  
CHINES, AND MORE! CRANE RADIO FREQU-  
ENCY ABD PENDANT REMOTES, CRANE DIRECT  
DRIVE MOTORS, SEE CATALOG FOR DETAILS!



**MAGNUM FLOOR SCRUBBER**



**BORE INSIDE MICROMETER**



**LAWSON STORAGE DRAWER**



**CYLINDER BORE GAUGE**



**NEW BALDOR MOTORS**



**MAZAK MDL. QTN 450M-II CNC LATHE**



**DAEWOO PRO TURN MDL. 60B FLATBED CNC LATHE**



**SPANCO 3 T. FREE-STANDING GANTRY CRANE SYSTEM**

**LOCATION 8**  
 Surplus Items Stored at  
**ABLE MACHINERY MOVERS**  
**10835 Bammel North Houston,**  
**Houston, Texas 77086**  
**INSPECTION:** Monday & Tuesday, August 28 & 29  
 by Appointment Only. Call Cody Murrah at  
 (713) 460-2253 for Appointment.



**O-M LTD. MDL. VT-12 VERTICAL TURRET LATHE**

**CNC LATHE**

**MAZAK MDL. QTN 450M-II**, new 2007, Mazatrol Matrix Nexus control, 33.1" max. swing, 23" max. turning dia., 40.3" max. turning length, 40 HP, 2,000 max. RPM, 6.5" bar cap., hyd. steadyrest, S/N 195561.

**FLATBED CNC LATHE**

**DAEWOO PRO TURN MDL. 60B**, new 1997, Fanuc control, 27.95" sw. over bed, 23.6" max.

**SLANT BED CNC LATHE**

**WARNER SWASEY MDL. SC-28**, Fanuc 21i-TA retro fit control, 29" sw. over bed, 8" bore pwr. chuck.

**VERTICAL TURRET LATHE**

**O-M LTD. MDL. VT-12**, 47" tbl. dia., 66" max. sw., 11,000-lbs. max. tbl. load, 43" ht. under rail, turret and side head, S/N MN752740.

**TURRET LATHE**

**GISHOLT MDL. 4-L MASTERLINE**, 12.5" spdl. bore, 31.37" sw. over ways, 24.5" sw. over cross slide, 4-jaw chuck, ram and saddle, cross sliding turret, 60" dist. btn. centers, S/N 3408-7.

**ENGINE LATHE**

**22" X 60" AXELSON**, 15" 3-jaw chuck, taper attachment, S/N 311.

**FREE-STANDING GANTRY CRANE SYSTEM**

**SPANCO 3 T.**, approx. 100' length x approx. 30' wide, no hoist, turning dia., 118" max. turning length, twin turrets, 18" 3-jaw pwr. chuck, S/N 2806317.

**HOT WATER PRESSURE WASHERS**

**(2) LANDA MDL. VHGS-30024C**, 10 HP, 3,000 psi, 460 v., 3-phase.

**WATER RECLAMATION SYSTEM**

**WATERMAZE MDL. 1.103-510.0 W/PLASTIC TANKS**, S/N 11035100-000177.



**WATERMAZE WATER RECLAMATION SYSTEM**



**22" X 60" AXELSON ENGINE LATHE**



**(2) LANDA MDL. VHGS-30024C HOT WATER PRESSURE WASHERS**

**WEDNESDAY,**  
**AUGUST 30**  
**10:00 A.M.**  
**LIVE ONLINE WEBCAST ONLY**  
**(NO ONSITE BIDDING)**



**GISHOLT MDL. 4-L MASTERLINE TURRET LATHE**





**MULTICAM 10' X 20' CNC PLASMA, OXY AND MILLING MACHINE**



**VERSON MDL. H-300-10 HYDRAULIC PRESSBRAKE**

### CNC PLASMA, OXY & MILLING MACHINE

**MULTICAM**, new 2014, 10' x 20' travels, Hypertherm HPR 400 plasma pwr. source w/pwr. Pierce Technology (out of service).

### ANGLE BENDING ROLL

**EAGLE BPR CURVATRICI MDL. CPD-80**, new 2001, 4" x .104" cap., 3" pipe cap., 2-5/16" bar cap., 6.5 HP, S/N L053.

### HYDRAULIC PRESSBRAKE

**VERSON MDL. H-300-10**, 300 T x 10' cap., 12" stroke, 6" shut ht., S/N 15009.

### FORKLIFT

**CLARK 15,400-LB. BASE CAP. MDL. CPM-70D**, 11,700-lb. cap. as equipped, 2-stage mast, 177" lift ht., side shift, pneumatic tires, diesel pwr.

## LOCATION 9

Surplus to the Ongoing Operations of

**LABELLECO  
FABRICATION  
7335 FRINT RD.,  
BEAUMONT,  
TEXAS 77055**

**INSPECTION: Monday & Tuesday,  
August 28 & 29**

By Appointment Only.

Call Shane Romero  
(409) 273-9636 for Appointment.



**HYPERTHERM HPR 400 PLASMA  
POWER SOURCE**



**EAGLE BPR CURVATRICI  
ANGLE ROLL**



**CLARK 15,400-LB. BASE CAP. MDL. CPM-70D  
FORKLIFT**

## 15 LOCATIONS: TEXAS & TENNESSEE

Featuring: CNC & Manual  
Machine Tools & Fabricating  
Equip.; Forklifts; MORE!

**WEDNESDAY, AUGUST 30 • 10:00 A.M.  
LIVE ONLINE WEBCAST ONLY (NO ONSITE BIDDING)**

### ONLINE REGISTRATION

Register to bid at

**BidSpotter** or **proxibid**

1. Use the [link](http://link) to Bidspotter.com or Proxibid.com on PMI's website calendar. [www.pmi-auction.com](http://www.pmi-auction.com) DO IT NOW!

2. This auction may require a Cash, or credit card, or debit card, 100% refundable deposit. If by credit or debit card, it can be added through the Bidspotter.com fully secure and PCI compliant registration process and will be assessed a 100% refundable \$3,000 (US Bidder) or a \$10,000 (Foreign Bidder) deposit in order to be approved to bid online with this auction. Cash deposits can be made by wire transfer. **DON'T WAIT.** If you are unsuccessful in the auction, the refund of your credit/debit card deposit will occur shortly after the auction ends. Cash deposits will be expedited as well.

If you need assistance, don't hesitate to call (713) 691-4401.

**ALL BIDS ARE SUBJECT TO AN  
18% BUYER'S PREMIUM.**

### PARTIAL TERMS & CONDITIONS:

An 18% Buyer's Premium Will Apply.

Everything will be sold to the highest bidder or bidders for cash in accordance with the auctioneer's Customary Terms of Sale, copies of which will be posted on our website.

**ALL PAYMENTS MUST BE MADE BY CASHIER'S CHECK, WIRE TRANSFER OR COMPANY CHECK WITH BANK LETTER GUARANTEEING PAYMENT TO PLANT & MACHINERY INC.**

Here is an example of what your letter should be: Mr. "Customer Name" is a customer of this bank. This bank will guarantee unqualified payment to PMI on the account listed herein up to the amount of \$\_\_\_\_\_. This letter is good until October 2, 2023.

In default of payment of bills in full within the time therein specified, the Auctioneer in addition to all other remedies allowed by law, may retain all monies received as deposit or otherwise, as liquidated damages. All items must be removed by the time announced at the start of the sale.

Lots not paid for and/or removed within the time allowed may be resold at public or private sale without further notice, and any deficiency, together with all expenses and charge of resale, will be charged to the defaulting purchaser.

The buyer acknowledges that he or an agent has inspected all of the assets upon which he will be bidding and/or does purchase.

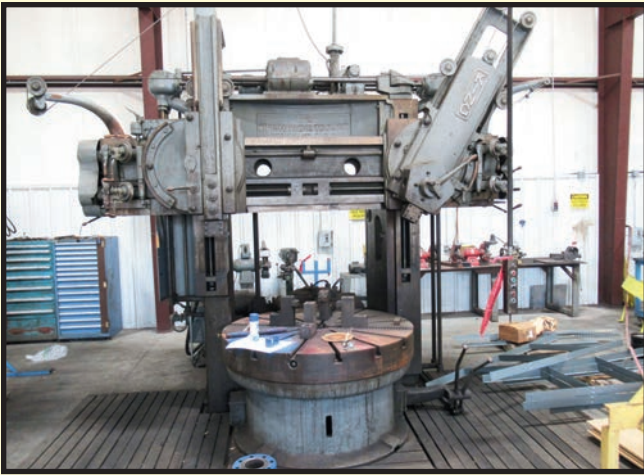
Buyer agrees to accept assets purchased "AS IS," WITH "ALL FAULTS" AND "WITH REMOVAL AT BUYER'S RISK AND EXPENSE." THE AUCTIONEER EXPRESSLY DISCLAIMS ON THE PART OF THE

AUCTIONEER AS AGENT AND THE SELLER, ANY WARRANTY AS TO FITNESS OR USABILITY OF ALL THE ASSETS, AND THE BUYER EXPRESSLY WAIVES ANY CLAIM IN RESPECT TO ANY POSSIBLE FUTURE USE OF ANY ASSET PURCHASED FOR ANY PURPOSE WHATSOEVER.

The buyer does hereby assume and does agree to indemnify and hold the auctioneer harmless from any future claim which shall pertain to the fitness or use of that asset as being purchased. Riggers, movers, electricians and buyers performing work at the Auction Site must provide PMI with evidence of insurance. The insurance coverage must be at a level acceptable to PMI and to the seller. PMI reserves the right to withdraw items, alter the order of the sale, accept bids from the seller, and group lots as it may deem appropriate. This auction may include consignment items.

Although all information has been obtained from sources deemed reliable, the auctioneer and seller make no warranty or guarantee, expressed or implied, as to the accuracy of the information herein contained, or contained in our catalog. It is for this reason that buyers should avail themselves of the opportunity to make inspection prior to the auction. Although it is not likely, auction sales are subject to cancellation or postponement. Kindly contact auctioneer prior to attendance.

These terms and conditions may be modified or supplemented by language in the catalog available at the sale site or by announcement at the start of the sale. Bidders should be attentive to those announcements and to the catalog language.



62" KING VERTICAL BORING MILL



5' X 15" KAO MING MDL. KM4-1600DH RADIAL ARM DRILL



18" X 72" LEBLOND REGAL ENGINE LATHE



VERNIER FV3 UNIVERSAL MILL

## LOCATION 10

Surplus to the Ongoing Operations of

**TEAM, INC.**

8115 RED BLUFF RD.  
PASADENA,  
TEXAS 77507

INSPECTION: Monday & Tuesday, August 28 & 29 by Appointment Only. Contact Andrew Decker at (281) 628-4021 for Appointment.

### VERTICAL BORING MILL

62" KING, w/(1) turret and (1) ram head, 70" sw., 48" under rail, 4-jaw chuck w/master jaws, updated electrics.

**RADIAL ARM DRILL**  
5' X 15" KAO MING MDL. KM4-1600DH, box tbl., S/N 60031.

**ENGINE LATHE**  
18" X 72" LEBLOND REGAL, taper attachment, 15" 4-jaw chuck, S/N 4D1490.

**UNIVERSAL MILL**  
VERNIER FV3, 12" x 59" tbl. size, Acer 5 HP variable spd. head mounted on spdl., right angle attachment.

## LOCATION 11

Surplus to the Ongoing Operations of

**TEAM, INC.**

1202 HAHLO ST., HOUSTON, TEXAS 77020

INSPECTION: Monday & Tuesday, August 28 & 29 by Appointment Only.

Contact Craig Kempken at (281) 898-3439 for Appointment.

### ENGINE LATHES

20" X 54" AXELSON, taper attachment, 12" 3-jaw chuck, S/N 4932.

16" x 60" VICTOR, 7.5 HP, S/N 58656.

**ROTARY SURFACE GRINDERS**  
(2) ARTER A-12, 12" dia. wheel, 14" tbl., S/N N/A.

### GEARED HEAD PEDESTAL DRILL PRESS

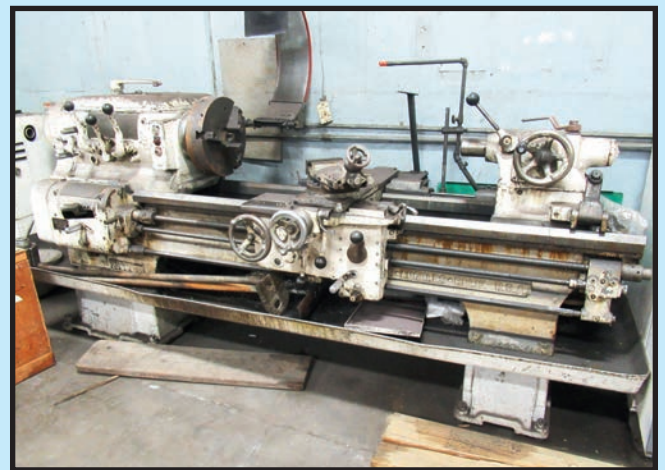
ELLIOTT 4-E, 2.5 HP, 1.25" drilling cap., S/N 091486/443.



(1 OF 2)  
ARTER A-12  
ROTARY  
SURFACE  
GRINDERS



ELLIOTT  
4-E  
GENERAL  
HEAD  
PEDESTAL  
DRILL  
PRESS



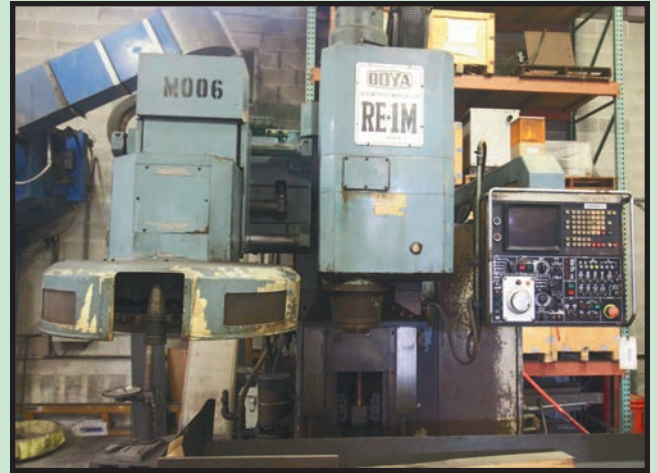
20" X 54" AXELSON ENGINE LATHE

LIVE ONLINE BIDDING ONLY (NO ONSITE BIDDING); YOU MUST REGISTER IN ADVANCE FOR ONLINE BIDDING AT THIS AUCTION. Go to [www.pmi-auction.com](http://www.pmi-auction.com) and click on BidSpotter or proxibid on our calendar page for this auction sale.

**15 LOCATIONS: TEXAS & TENNESSEE**  
Featuring: CNC & Manual Machine Tools & Fabricating Equip.; Forklifts; MORE!



MORI SEIKI MDL. LL7 CNC FLATBED LATHE



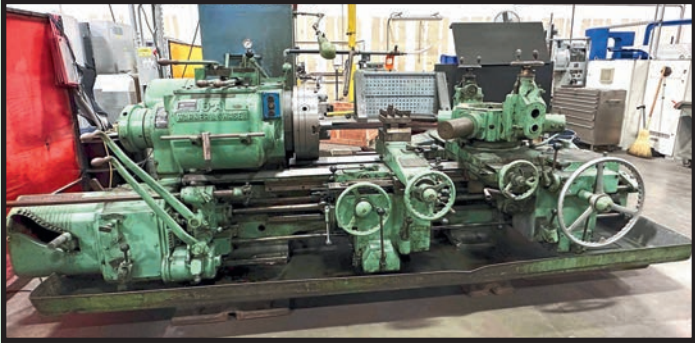
O OYA MDL. RE-1M VERTICAL MACHINING CENTER

**LOCATION 12**  
 Surplus to the Ongoing Operations of  
**BRAY INTERNATIONAL, INC.**  
 13333 WESTLAND E. BLVD. #203,  
 HOUSTON, TEXAS 77041  
**INSPECTION:** Monday & Tuesday, August 28 & 29 by Appointment Only.  
 Contact Parthiban Ravikumar at (281) 894-5454 for Appointment.

**CNC FLATBED LATHE**  
 MORI SEIKI MDL. LL7, retrofit w/ Centroid control, twin turrets, 24" Nobel pwr. chuck, chip conveyor.  
**TURRET LATHES**  
 (2) WARNER SWASEY MDL. 3-A, S/N 56942, S/N 1309790.  
**VERTICAL MACHINING CENTER**  
 O OYA MDL. RE-1M, Fanuc 6M control, S/N N82B-5833.  
**VERTICAL BANDSAW**  
 KALAMAZOO MDL. VS-36, 36" throat, S/N 046.



KALAMAZOO MDL. VS-36 VERTICAL BANDSAW



(1 OF 2) WARNER SWASEY MDL. 3-A TURRET LATHES

**15 LOCATIONS: TEXAS & TENNESSEE**  
 Featuring: CNC & Manual Machine Tools & Fabricating Equip.; Forklifts; MORE!



**LOCATION 13**  
**HIPPO HOPPER**  
 27807 RED FOX RD.,  
 TOMBALL, TEXAS 77377  
**INSPECTION:** Monday & Tuesday, August 28 & 29 by Appointment Only. Contact Barry Woods at (832) 456-4561 for Appointment.

**FORKLIFT**  
 YALE 6,000-LB. BASE CAP. MDL. GLC060VXNUR086, 126" lift ht., 2-stage mast, side shift, cushion tires, S/N A910V1725C.

**WEDNESDAY, AUGUST 30 10:00 A.M. LIVE ONLINE WEBCAST ONLY (NO ONSITE BIDDING)**

**INSPECTION:** Varies By Location. See Each Location for Details.

**LIVE ONLINE BIDDING ONLY (NO ONSITE BIDDING):** YOU MUST REGISTER IN ADVANCE FOR ONLINE BIDDING AT THIS AUCTION. Go to [www.pmi-auction.com](http://www.pmi-auction.com) and click on BidSpotter or proxibid on our calendar page for this auction sale.



TCM FORKLIFT



YALE FORKLIFT

**LOCATION 14**  
**SHELDON ROAD**  
**STORAGE FACILITY**  
**10809 SHELDON RD.,**  
**HOUSTON, TEXAS 77044**  
**INSPECTION:** Monday & Tuesday,  
 August 28 & 29 by Appointment Only.  
 Contact Ivan Ledet (832) 978-6246  
 for Appointment.



YORK 125 T. CAP. CHILLER



40' CONEX

**FORKLIFTS**  
 TCM MDL. FG30N7, 6,000-lb. cap., diesel, 184" lift ht., 3-stage mast, dual front tires, S/N 14430486.  
 YALE MDL. GLC060PCUAE083, 6,000-lb. cap., 190" lift ht., 3-stage mast, solid tires, LP pwr.

**UTV**  
 KUBOTA MDL. RTV-1140, diesel pwr.

**CHILLER**  
 YORK, 125 T.

**MATERIAL HANDLING**  
 40' CONEX, wood deck needs repair.  
 OPEN TOP METAL CONTAINER, 5' x 9' x 5'H., 2,911-lbs. empty, 10,319 payload, total weight 13,330-lbs., contents included.

**HEAT RECOVERY UNITS**  
 (2) GREE MDL. GMV 5HR, (GMV-Q96WM/B-F(U), 8 T., 96K BTU, DC inverter, R410A refrigerant.

**WELDING WIRE & RODS**  
 PALLET OF (13) BOXES OF WELDING WIRE, PINNACLE ALLOYS, TYPE IS E91T1-B3, SZ. .045, SPEC IS AWSA5.29/ASMESFA5.29.;  
 PALLET OF (13) BOXES ASSORTED WELDING ROD

**SUPPORT EQUIPMENT**  
 AIR TUGGER PNEUMATIC WENCH, BEEBE BROS, INC. MDL. FA5-30MK16, 5 T. cap., 11,000 safe working load; (2) ENDURAPLAS FUEL BOSS PORTABLE DIESEL TANKS; STEEL FRAME CANTILEVER RACK, 5-TIER, I-BEAM CONSTRUCTION W/CONTENTS; TOTE W/ELECTRIC POWER TOOLS.

**LIVE ONLINE BIDDING ONLY (NO ONSITE BIDDING): YOU MUST REGISTER IN ADVANCE FOR ONLINE BIDDING AT THIS AUCTION.**  
 Go to [www.pmi-auction.com](http://www.pmi-auction.com) and click on BidSpotter or proxibid on our calendar page for this auction sale.

**2 AVAILABLE**

(1 OF 2) GREE GMV 5HR HEAT RECOVERY UNIT (UNUSED)

**WEDNESDAY,**  
**AUGUST 30**  
**10:00 A.M.**  
**LIVE ONLINE WEBCAST ONLY**  
**(NO ONSITE BIDDING)**

**LIVE ONLINE BIDDING ONLY (NO ONSITE BIDDING):**  
 YOU MUST REGISTER IN ADVANCE FOR ONLINE BIDDING AT THIS AUCTION.  
 Go to [www.pmi-auction.com](http://www.pmi-auction.com) and click on BidSpotter or proxibid on our calendar page for this auction sale.



**LOCATION 15**  
**HAMMONDS FUEL ADDITIVES**  
**32110 DECKER PRAIRIE RD.,**  
**PINEHURST, TEXAS 77362**  
**INSPECTION:** Contact Chuck Guthrie (281) 951-1448  
 or Mike Belldon (281) 951-1428 for Appointment.

**ELECTRIC MAN UP TURRET FORKLIFT**  
**RAYMOND 3,000-LB. BASE CAP. MDL. 537-CSR30T,** 3,000-lb. cap., 240" lift ht., S/N 537-93-01032 (needs battery), (roll-off needed for removal).