



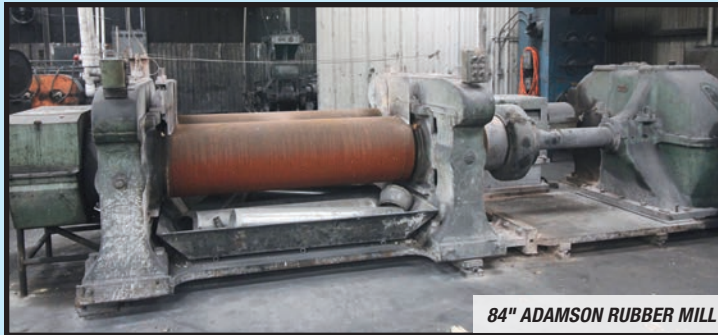
AUCTION

HUGE AUCTION • MULTIPLE LOCATIONS ACROSS TEXAS

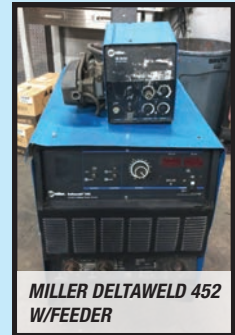
FEATURING: CNC & Manual Machine Tools; Grinders; Rubber Mixers, Mills & Presses; Fabricating Equip.; 100+ Welders; Forklifts; Material Handling; Trucks & Trailers; HPUs & Hydraulic Repair Parts; More



HYSTER
22,500-LB.
CAP. LPG
FORKLIFT



84" ADAMSON RUBBER MILL



MILLER DELTAWELD 452
W/FEDER

WEDNESDAY, MAY 17 • 10:00 A.M.
LIVE ONLINE WEBCAST (NO ONSITE BIDDING)

FOR BIDDING AT THIS AUCTION.
Go to www.pmi-auction.com
and click on **BidSpotter** or
proxibid on our calendar
page for this auction sale.

INSPECTION: Varies By Location. See Inside for Details.

18% BUYER'S
PREMIUM WILL APPLY



INGERSOLL RAND 100
HP ROTARY SCREW
AIR COMPRESSOR

2016



(1 OF 2) AWEA MDL. VP2012 GANTRY TYPE VERT. MACHINING CENTERS



HAAS SR-100 CNC ROUTER



INTERNATIONAL
PROSTAR EAGLE
TRUCK TRACTOR

2008



HUGE HYDRAULIC PARTS INVENTORY



MARVEL M525PC/1 TILT-FRAME
VERTICAL BANDSAW

Read Partial Terms & Conditions on Page 9

Sale Conducted By:

PLANT & MACHINERY INC.
AUCTIONEERS • APPRAISERS • LIQUIDATORS • REAL ESTATE

Ron Moore, TX Lic. #7314
HOUSTON • DALLAS • ST. LOUIS

Headquarters:
1304 Langham Creek Drive, Suite 454
Houston, Texas 77084

PHONE: (713) 691-4401

FAX: (713) 672-7905

E-MAIL: pmi@pmi-auction.com
WEBSITE: www.pmi-auction.com



AUCTION

LOCATION 1

Surplus to the Ongoing Operations of
NATIONAL OILWELL VARCO
12950 WEST LITTLE YORK,
HOUSTON, TEXAS 77041

INSPECTION: By Appointment Only.
Contact Mike O'Malley at (713) 829-1129
for Appointment.



AS NEW AS
2014

27
AVAILABLE

LINCOLN IDEALARC DC400



DELORO STELLITE STARWELD 400A STELLITE HARDFACING AND COATING MACHINE

COATING MACHINE

DELORO STELLITE STARWELD 400A STELLITE HARDFACING AND COATING MACHINE, new 2011, 480 v., S/N 400A/990261.

HOLLOW SPINDLE LATHE

DEAN SMITH & GRACE OIL COUNTRY HOLLOW SPINDLE LATHE MDL. 25P, 26" x 120", 26.25" swing over ways, 16" swing over carriage, 10.50" dia. spdl. hole, 4.0-290 RPM, 20 HP motor, (2) 25" dia. 4-jaw chucks, mounted front and rear w/20" dia. 3-jaw chuck, (2) steadyrests, taper attachment, tailstock, inch/metric threading, Newall DRO, air kick out, modified to do super finishing/grinding.

SLIDING GAP BED LATHE

LEBLOND, 19"/26" x 30"/90", 20" 3-jaw chuck, taper attachment, 1-3/4" dia. spdl. hole, modified to do super finishing/grinding, S/N 8F2638.

WELDING POSITIONERS

PANDJIRIS MDL. 30-6, 3,000-lb. cap.; (2) PROFAX WP-250.

FLOOR WELDING TURN TABLES

84" KEC, pendant control, 480 v.; 60" WELDWIRE MDL. WWFT-12, 12,000-lb. cap.; 24" WELDWIRE.

VIBRATORY STRESS RELIEVING EQUIPMENT

META-LAX MDL. 2700, vibratory stress relief unit w/ cabinet.



PANDJIRIS MDL. 30-P 3,000-LB. CAP. WELDING POSITIONER



META-LAX VIBRATORY STRESS RELIEF UNIT



84" KEC FLOOR WELDING TURN TABLE



MAGNETIC BASE DRILL W/CASE



HOLLOW SPINDLE LATHE W/SUPERFINISHING ATTACHMENT



(10) DYSON AIRBLADE HAND DRYERS

UNUSED

FOR BIDDING AT THIS AUCTION.
Go to www.pmi-auction.com and click on
BidSpotter or **proxibid** on our calendar page
for this auction sale.

WEDNESDAY, MAY 17
10:00 A.M.
LIVE ONLINE WEBCAST (NO ONSITE BIDDING)



MILLER PIPEWORX W/WIRE FEEDER



LINCOLN POWERWAVE 1000 SD WELDER



(2) MILLER PROHEAT 35 INDUCTION HEATERS

LOCATION 1
 Surplus to the Ongoing Operations of
**NATIONAL OILWELL
 VARCO**
**12950 WEST LITTLE YORK,
 HOUSTON, TEXAS 77041**
INSPECTION: By Appointment Only.
 Contact Mike O'Malley at (713) 829-1129
 for Appointment.



KEEN ROD OVEN



NELSON STUD WELDER

WELDING MACHINES
 (5) LINCOLN POWER WAVE MDL. 1000SD, AC/DC, advanced submerged arc welder, as new as 2011; (3) MILLER MDL. PIPEWORX 400, 230/460 v., as new as 2014; (2) LINCOLN IDEALARC DC600, multiprocess, as new as 2006; (27) LINCOLN IDEALARC DC 400, multi process w/multiprocess switch and Lincoln LF-74 wire feed, as new as 2014; (2) MILLER MDL. GOLDSTAR 652, as new as 2006; (2) MILLER MDL. DIMENSION 652, as new as 2010; (3) MILLER MDL. DIMENSION NT 452, as new as 2008; (10) MILLER MDL. DIMENSION NT 450, as new as 2012; MILLER MDL. MILLERMATIC 350P; MILLER MDL. DIMENSION 250DX, (1999); MILLER MDL. CP300, w/Miller 22A wire feed and rolling cart (1984); (2) MILLER MDL. SYNCROWAVE 350LX, as new as 2014; MILLER MDL. SYNCROWAVE 250DX, new 2007; (4) SUITCASE WELDERS, w/Miller 22A wire feeders.
WIRE FEEDERS
 (11) LINCOLN LF-74 WIRE FEEDERS; (2) LINCOLN LF-72 WIRE FEEDERS.
TIG WELDERS
 LINCOLN PRECISION TIG 375, new 2009; LINCOLN PRECISION TIG 185.
**WELDING ACCESSORIES, TURNING ROLLS, SHOP TOOLS,
 MORE**
 (2) MILLER INDUCTION HEATERS MDL. PROHEAT 35 w/temp. control, 460/575 v., as new as 2014; (2) MILLER COOLMATE 3 WATER COOLERS, as new as 2014; KEEN ROD OVEN MDL. K-MPO, 25" x 32" x 47" tall outside dimension; (5) KEEN HEATED FLUX OVEN MDL. KF-300, hopper style, 300-lb. cap., 24" x 24" x 25" tall outside dimension, 150-550 deg., on rolling cart; (3) KEEN HEATED FLUX OVEN MDL. DF-100A, hopper style, 125-lb. cap., 150-300 deg., 20" x 16" x 23" outside dimension, on rolling cart; (3) KEEN ROD OVENS; GULLCO ROD OVEN; DRY ROD OVEN, 21" dia. x 23" long; (3) PALLETS OF OXYGEN/ACETYLENE HOSES, LEADS; (2) BOX WELDERS; NELSON STUD WELDER w/leads; LINCOLN TC-3 SELF PROPELLED HIGH CAPACITY TRAVEL CARRIAGE, w/(4) flux hoppers and (2) weld heads; (7) TANK TURNING ROLLS, (2) drive units, 14" dia. wheels, (5) idler units, 11" dia. wheels; (3) SQ. TRANSPORT CARTS, various sizes; MAGNETIC BASE DRILL MDL. MAB 825/845, 110 v., 220-600 RPM, 4-1/16" dia. cutter cap.; STEEL TABLE, 48" sq. x 35" tall; WELDING MACHINE STAND, 32" x 48" x 36" tall, w/leads and grounding cables; HYDRAULIC PRESSURE TEST UNIT; APPROX. (10) DYSON AIRBLADE DB HAND DRYERS, Mdl. AB14, unused.



LINCOLN PRECISION TIG 375 WELDER

SAMPLE VIEW OF TANK TURNING ROLLS

**WEDNESDAY,
 MAY 17
 10:00 A.M.
 LIVE ONLINE
 WEBCAST
 (NO ONSITE
 BIDDING)**





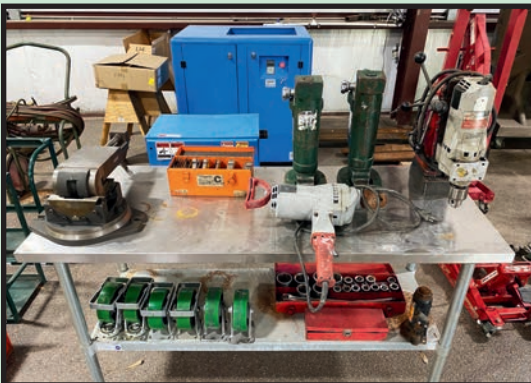
HYSTER 22,500-LB. CAP. LPG FORKLIFT



MILLER PIPEWORX FIELD PRO WELDING POWER SOURCE



TORA-MAX ELECTRIC PALLET JACK



SAMPLE VIEW OF POWER TOOLS



SAMPLE VIEW OF HYDRAULIC POWER PACKS AND HD SKATES

LOCATION 2

Surplus to the Operations of Area

MANUFACTURING COMPANIES & OTHERS

Moved for Convenience of Sale to

SNS INDUSTRIAL MACHINERY MOVERS, INC.

13991 HENRY HARRIS ROAD, CONROE, TEXAS 77306

INSPECTION: Monday & Tuesday, May 15 & 16, 9:00 A.M. to 4:00 P.M. Each Day.

FORKLIFTS

HYSTER 22,500-LB. BASE CAP. MDL. S150, LPG, dual stage, 131" lift ht., 2-spd., solid tires, 1,714 H.O.M., 72" forks.

(2) SET OF 60" FORKLIFT FORKS, mounting dimension 25-1/2".

ELECTRIC PALLET JACK

TORA-MAX MDL. 1273963/001, 2 T. cap., w/built-in charger, (6 v. batteries will need to be replaced).

CARGO TRAILER

CARGOMATE E-SERIES 12' X 5' CARGO, new 2021, single axle, double swing doors, led lights, VIN: 5NHUEH016NY088214.

MATERIAL HANDLING EQUIPMENT

CUSTOM PORTABLE ENGINE PICKER, 2 T. cap.; CUSTOM FLOOR JACK, 2.5 T. cap.; STRONGWAY HYDRAULIC TRANSMISSION JACK, 1,500-lb. cap.; (2) HILMAN HYDRAULIC TOE JACKS, Mdl. HTJ-10; (2) CUSTOM PAIR OF SKATES, 400 T. cap.; (2) HEVI-HAUL PAIR OF SKATES, Mdl. UMS-HD-75, 37.5 T. cap.; (2) CUSTOM PAIR OF SKATES, Mdl. AF12G, 12 T. cap.; (2) HARPER OXYGEN ACETYLENE BOTTLE RACKS; OXYGEN ACETYLENE CART, w/hose; CUTTING TORCH AND ACCESSORIES; JANITORIAL SUPPLIES, incl. bleach, gloves, etc.

(50+) WELDING POWER SOURCES, PLASMA CUTTING & ACCESSORIES

(2) MILLER PIPEWORX 350 FIELD PRO w/feeds, new 2014; (9) MILLER INVISION 456, some w/feeds; (12) MILLER XMT 350 CC/CV, new as 2011; (4) MILLER DELTAWELD 452, some w/feeds; MILLER DIMENSION 1000, 652, 452 AND NT450, some w/feeds; (3) LINCOLN POWERWAVE AND FLEXTEC; (2) HYPERTHERM PLASMA, Powermax 110 and 1000; (20+) MILLER AND LINCOLN WIRE FEEDERS; NELSON STUD WELDER MDL. 4800; BERNARD COOLING UNITS; OTHER ITEMS FROM WELDCRAFT, SUNOX, TWECO COOL ARC AND MAGNUM!

COMPRESSOR PARTS

CONSISTING OF: FILTERS, OIL, GASKET, FAN, MORE!

CYLINDERS

(4) C/O ENERPAC CYLINDERS, w/hydraulic hand pump.

PORTABLE HYDRAULIC DRUM ROTATOR TILTER

VESTIL MDL. DRUM-LRT-1 55 GALLON, 550-lb. cap., 62" lift ht., S/N 192249.

HUGE AUCTION • MULTIPLE LOCATIONS ACROSS TEXAS

FEATURING: CNC & Manual Machine Tools; Grinders; Rubber Mixers, Mills & Presses; Fabricating Equip.; 100+ Welders; Forklifts; Material Handling; Trucks & Trailers; HPUs & Hydraulic Repair Parts; More

WEDNESDAY, MAY 17 • 10:00 A.M.
LIVE ONLINE WEBCAST (NO ONSITE BIDDING)

FOR BIDDING AT THIS AUCTION.
 Go to www.pmi-auction.com and click on **BidSpotter** or **proxibid** on our calendar page for this auction sale.



AUCTION

**WEDNESDAY
MAY 17
10:00 A.M.
LIVE ONLINE WEBCAST
(NO ONSITE BIDDING)**

HUGE AUCTION • MULTIPLE LOCATIONS ACROSS TEXAS

FEATURING: CNC & Manual Machine Tools; Grinders; Rubber Mixers, Mills & Presses; Fabricating Equip.; 100+ Welders; Forklifts; Material Handling; Trucks & Trailers; HPU's & Hydraulic Repair Parts; More



(OVER 50) WELDING MACHINES



40' CONEX

LOCATION 2, CONTINUED

Surplus to the Operations of Area
MANUFACTURING COMPANIES & OTHERS
Moved for Convenience of Sale to
**SNS INDUSTRIAL MACHINERY
MOVERS, INC.**
**13991 HENRY HARRIS ROAD,
CONROE, TEXAS 77306**



PORT-A-COOL
SWAMP COOLER

INSPECTION:
Monday & Tuesday,
May 15 & 16,
9:00 A.M. to
4:00 P.M. Each Day.

**FOR BIDDING AT
THIS AUCTION.**
Go to
www.pmi-auction.com
and click on
BidSpotter
or **proxibid**
on our calendar page
for this auction sale.

SHOP SUPPORT EQUIPMENT

(3) DAYTON 32" SHOP FANS; (2) MAXESS 32" SHOP FANS; (3) PEDESTAL SHOP FANS; RIDGID THREADING DIES; ASSORTED ROLLER CHAIN; SPROCKETS; ASSORTED HAND TOOLS; SOCKETS; SHIMS; BOTTLE JACK; NEW CASTERS; (41 PACKAGES OF 4) NEW DUCT TAPE; RUG DOCTOR CARPET CLEANER, commercial; FASTENERS; BOLTS; RIP STEADYREST, Mdl. 212, PUMA 400; LASER JET AND BROTHER PRINT CARTRIDGES.

SWAMP COOLER

PORT-A-COOL MDL. PACJS2400 SWAMP COOLER/EVAPORATIVE COOLING UNIT, 24" jet stream, 115 v., 60 hz, 9.2 amps, S/N 252634-11.

TRI-CYCLES

(2) HUSKY 26" WHEELS, w/metal tool box.

CONEX BOX

BANGKOK CONTAINER INDUSTRIES MDL. BAD4, 40'L x 7'10"H.

MISCELLANEOUS SHOP MACHINES

MILWAUKEE MDL. 4262-1 MAGNETIC DRILL PRESS; MILWAUKEE 3/4" MDL. 1854-1 ELECTRIC DRILL; TAIWAN 4" COMPOUND MACHINIST VISE.

PHOTOVOLTAIC SOLAR PANELS

(6) HYUNDAI MDL. HIS-S270RG PHOTOVOLTAIC SOLAR PANELS, 270 watts, 40" x 65", w/assortment of aluminum mounting hardware.

AIR COMPRESSOR

U.S. AIR CORPORATION MDL. US20D1, new 2019, 20 HP, 100-190 max. PSI, 480 v., S/N 192579.

AIR DRYER

U.S. AIR CORPORATION, Mdl. US20.



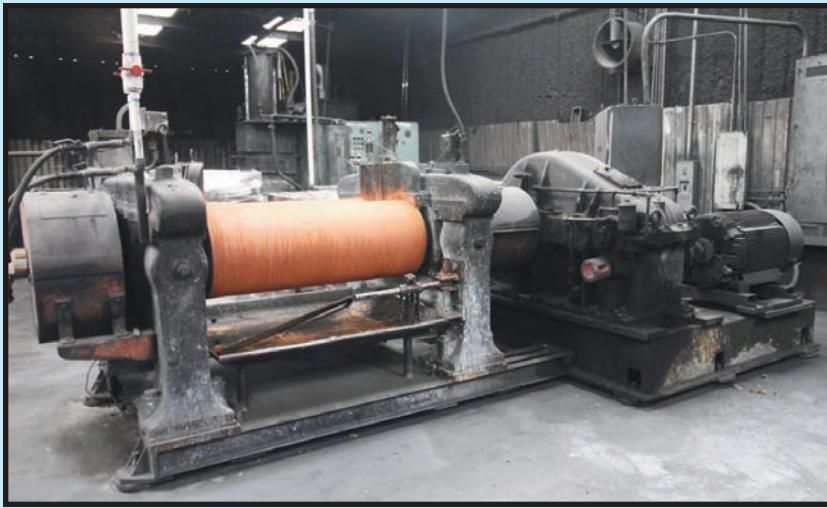
12' X 5' CARGOMATE TRAILER



U.S. AIR CORP. 20 HP AIR COMPRESSOR

INSPECTION:
Varies By Location.
See Inside for Details.

**DON'T MISS
THIS SALE**



**60" FARREL
RUBBER MILL**



**CLARK
3,000-LB.
BASE CAP.
LPG FORKLIFT**

RUBBER MILLS

42" KOBE, 16" x 42" roll; **UNI-MIX MILL**, 13.3-17.6 RPM, 50 HP, S/N 280-1797; **84" ADAMSON 26" X 84" X 84"**, 200 HP, Lufkin gear box; **60" FARREL**, 22" x 60", 200 HP; **12" RUBBER MILL**.

MIXERS

KOBE DISPERSION MIXER 50 LITRE MDL. MM75-125, 75-liter extra body; **MORIYAMA DISPERSION MIXER MDL. DX55-120**, 50-liter.

LAB PRESSES

(2) PHI PASADENA 40,000 PSI.

AIR COMPRESSOR

GARDNER DENVER ROTARY SCREW AIR COMPRESSOR, 30 HP, w/receiving tank.

FORKLIFTS

NISSAN 50 5,000-LB. BASE CAP. MDL. MC-PL02A25LS, 4,400-lb. cap., 187" lift ht., side shift, LPG pwr., solid tires, S/N CPL02-9P3203.

CLARK 3,000-LB. BASE CAP. MDL. CMC-15, 2200-lb., cap. at 187" lift ht., 3-stage mast, side shift, LPG pwr., solid tires, S/N CMC158L-0472-G53.

MISCELLANEOUS

HYDRAULIC GUILLOTINE, 24"; **DUST COLLECTOR**, 40 filter; **TOLEDO SCALES**; **LAB EQUIPMENT**; **12' UTILITY TRAILER**; **DIGITAL SCALE**, GSE 350, 10,000-lb.; **DOCK RAMP**; **BIG DOG MDL. C-142 RIDING LAWN MOWER**; **FANS**; **ELECTRIC MOTORS**; **CONAIR WATER FILTRATION UNIT MDL. DT-55 I**, 2 HP, 165 GPM, 125 RPM, S/N 59309; **WAREHOUSE LADDERS**; **ROLLING CARTS.**

LOCATION 3

Rubber Mill Shop Closing

JOE DUNNAM & COMPANY, LLC.

**1708 HAL AVENUE,
CLEBURNE, TEXAS 76031**

INSPECTION: Monday & Tuesday,
May 15 & 16, 9:00 A.M. to 4:00 P.M.
& Morning of Sale.

WEDNESDAY

MAY 17 • 10:00 A.M.

**LIVE ONLINE WEBCAST
(NO ONSITE BIDDING)**



MORIYAMA MDL. DX55-120 DISPERSION MIXER



(2) PHI PASADENA 40,000 PSI LAB PRESSES



CONAIR WATER FILTRATION UNIT



KOBE MDL. MM75-125 DISPERSION MIXER



24" HYDRAULIC GUILLOTINE



12" RUBBER LAB MILL



SHOP LADDERS



MARVEL M525PC/1 TILT-FRAME VERT. BANDSAW



HEM MDL. V125M VERT. BANDSAW

VERTICAL BANDSAWS

MARVEL MDL. MV525PC/1, new 2010, 21" x 22.5" cap., 15 HP, 1.5" blade size, shuttle table, replaced fluid drive motor, S/N MV52510103PC.

HEM MDL. V125M, 18" x 25" cap. @ 90 deg., 7.5 HP, S/N 270788.

HEM MDL. V100LA-2, 18" x 20" cap. @ 90 deg., 5 HP, S/N 455095.

WEDNESDAY, MAY 17 • 10:00 A.M.
LIVE ONLINE WEBCAST (NO ONSITE BIDDING)

LOCATION 4

Surplus to the Ongoing Operations of
HOUSTON METAL CUTTING

**6938 BARNEY ROAD,
 HOUSTON, TEXAS 77092**

INSPECTION: By Appointment Only.
 Contact Austin Zimmerman (281) 610-7990
 for Appointment.

WIRE CONTAINERS

(25) **ULINE BASKETS**, 40" x 32" x 34-1/2", 4,000-lb. cap.

MISCELLANEOUS SHOP SUPPORT

(13) ASSORTED ROLLER CONVEYORS; (6) SECTIONS OF BOLT TOGETHER PALLET RACK.

TRAILER

1997 **GOOSENECK MDL. GN20-12 TRAILER**, 14,000 G.V.W.R., dual axle, VIN 17YGZ028UB014603.



GOOSENECK MDL. GN20-12 TRAILER



SAMPLE VIEW ULINE WIRE CONTAINERS



HAAS SR-100 CNC ROUTER

LOCATION 5
MOORE FABRICATION
901 BAY AREA BLVD.,
HOUSTON, TEXAS 77058

INSPECTION: By Appointment Only.
 Contact Jordan White
 (713) 643-7477, ext. 302 for Appointment.

CNC ROUTER

HAAS SR-100, new 2007, Haas CNC control, 100" X, 52" Y, 8" Z-axis travels, 30 taper, S/N 1060005.

CNC VISION SYSTEM

STARRETT AV-350-Z-M3-3LED, new 2014, 14"-X, 14"-Y, 8"-Z axis travels, floor standing w/granite base, joystick control, S/N GA-1337-2896-0614.



STARRETT AV350 VISION SYSTEM



INGERSOLL RAND 100 HP ROTARY SCREW AIR COMPRESSOR



INGERSOLL RAND 25 HP ROTARY SCREW AIR COMPRESSOR

LOCATION 6

Surplus to the Ongoing Operations of **FABCORP, INC.**
6951 WEST LITTLE YORK ROAD,
HOUSTON, TEXAS 77040

INSPECTION: By Appointment Only. Contact Jeff Niemann at (832) 309-4087 for Appointment.

ROTARY SCREW TYPE AIR COMPRESSORS

INGERSOLL RAND MDL. R75I-TAS-A118 100 HP W/BUILT-IN AIR DRYER, new 2016, 455 CFM, 460 v., 3-phase, 60 hz., R-404A refrigerant, S/N VK4162U16341; **INGERSOLL RAND 25 HP VARIABLE SPEED**, Mdl. IRN25H-CC HV, 480 v., 3-phase, S/N CBV148329.

REFRIGERATED AIR DRYERS

INGERSOLL RAND MDL. NVC500A40N 500 SCFM, 230 PSIG MAWP, 460 v., 3-phase, R404A refrigerant, S/N 525522; **GARDNER DENVER MDL. CRN250A5C2N1 CHAMPION 250 SCFM**, 230/208 v., 3-phase, 134A refrigerant, S/N 1000002863008.

AUTOMATIC GENERATOR TRANSFER SWITCHES

(2) GENERAC MDL. GTX010W-2A2LDYFY, new 2021 and unused, 100 amp cap., 60 hz., 480 v., Dayton temp./ventilation control, all stainless steel enclosure, owner's manual, S/N 3007543125, S/N 3007532581.

COMMERCIAL AIR-COOLED CONDENSING UNIT

CARRIER MDL. 38AUZA12A0A6A0A0A0 10 T., refrigerant system R- 410-A, 460 v., 3-phase, S/N 1311G30073.

WELDING POSITIONER

CUSTOM 5,000-LB. CAP., dual 2,500 PSI hydraulic pistons for tilt, single phase 240/480 v., 5,000-lb. load cap., tilt motor, forward and reverse, hydraulic driven, rotate spd.: .030-1.5 RPM, 90-180 degree tilt, S/N N.A.



INGERSOLL RAND REFRIGERATED AIR DRYER



(1 OF 2) GENERAC AUTO. TRANSFER SWITCHES



CARRIER COMMERCIAL CONDENSING UNIT



GARDNER DENVER REFRIGERATED AIR DRYER



CUSTOM 5,000-LB. CAP. WELDING POSITIONER

HUGE AUCTION • MULTIPLE LOCATIONS ACROSS TEXAS

FEATURING: CNC & Manual Machine Tools; Grinders; Rubber Mixers, Mills & Presses; Fabricating Equip.; 100+ Welders; Forklifts; Material Handling; Trucks & Trailers; HPUs & Hydraulic Repair Parts; More

WEDNESDAY, MAY 17 • 10:00 A.M.
LIVE ONLINE WEBCAST (NO ONSITE BIDDING)

FOR BIDDING AT THIS AUCTION. Go to www.pmi-auction.com and click on BidSpotter or proxibid on our calendar page for this auction sale.

LOCATION 6, CONT.



**MESSER OXY FUEL
TYPE TRACK TORCH**



**GULLCO PLATE
BEVELER**



**HIGHLIGHT INDUSTRIES ROBOTIC
STRETCH WRAPPER**



**(1 OF 4) MILLER DELTAWELD 452
CV-DC WELDING POWER SOURCES**



**TIP TIG HIGH SPEED TIG WELDING
SYSTEM**



CFM VACUUM SYSTEM



**TENNANT 5700 XP ES
FLOOR SCRUBBER**

TRACK TORCH

MESSER OXY FUEL TYPE, dual head, tracks and complete frame.

TIG WELDING SYSTEM

TIP TIG HIGH SPEED EDITION, TIG welding process w/dynamic wire feeding, .030/.035/.040/.045 rollers, 120/240 v., Tig torch, manual.

WELDING POWER SOURCES

(4) MILLER MDL. DELTAWELD 452 CV-DC, new 2015, 450 amp cap. at 100% duty cycle, Process: mig, flux, arc gouge, saw, 3-phase, 14 pin, remote capable incl. volts and amps, dual positive terminals, S/N MF430038C, MF410049C, MF410130C, MF150029C.

SELF-PROPELLED PLATE BEVELER

GULLCO MDL. KBM-18-100-D, new 2009, Angles: 22-55 degree cut, Max bevel width: .71", Max bevel depth" .65", Plate thickness: 1/4" - 1-1/2", 2 HP, 460 v., 3-phase, 1,445 watts, portable, w/tbl., S/N 23842.3.

ROBOTIC SELF-PROPELLED STRETCH WRAPPER

HIGHLIGHT INDUSTRIES MDL. FANTOM ROBOT, semi-automatic touchscreen controls, recently repaired and working at 100%, S/N N.A.

PLANT SUPPORT EQUIPMENT

CFM MDL. 3SL INDUSTRIAL VACUUM SYSTEM, electric, 240 v., 3-phase, S/N 08AH880; **TENNANT MDL. 5700 XP ES FLOOR SCRUBBER**, 36 v. electrical system, w/manual, S/N 5700-10827; **PERIMETER LASER BEAM SAFETY BARRIER; MORE!**

ONLINE REGISTRATION

Register to bid at

BidSpotter or **proxibid**

1. Use the link to Bidspotter.com or Proxibid.com on PMI's website calendar. www.pmi-auction.com DO IT NOW!

2. This auction may require a Cash, or credit card, or debit card, 100% refundable deposit. If by credit or debit card, it can be added through the Bidspotter.com fully secure and PCI compliant registration process and will be assessed a 100% refundable \$3,000 (US Bidder) or a \$10,000 (Foreign Bidder) deposit in order to be approved to bid online with this auction. Cash deposits can be made by wire transfer. **DON'T WAIT.** If you are unsuccessful in the auction, the refund of your credit/debit card deposit will occur shortly after the auction ends. Cash deposits will be expedited as well.

If you need assistance, don't hesitate to call (713) 691-4401.

**ALL BIDS ARE SUBJECT TO AN
18% BUYER'S PREMIUM.**

PARTIAL TERMS & CONDITIONS:

An 18% Buyer's Premium Will Apply.

Everything will be sold to the highest bidder or bidders for cash in accordance with the auctioneer's Customary Terms of Sale, copies of which will be posted on our website.

ALL PAYMENTS MUST BE MADE BY CASHIER'S CHECK, WIRE TRANSFER OR COMPANY CHECK WITH BANK LETTER GUARANTEEING PAYMENT TO PLANT & MACHINERY INC.

Here is an example of what your letter should be: Mr. "Customer Name" is a customer of this bank. This bank will guarantee unqualified payment to PMI on the account listed herein up to the amount of \$_____. This letter is good until June 19, 2023.

In default of payment of bills in full within the time therein specified, the Auctioneer in addition to all other remedies allowed by law, may retain all monies received as deposit or otherwise, as liquidated damages. All items must be removed by the time announced at the start of the sale.

Lots not paid for and/or removed within the time allowed may be resold at public or private sale without further notice, and any deficiency, together with all expenses and charge of resale, will be charged to the defaulting purchaser.

The buyer acknowledges that he or an agent has inspected all of the assets upon which he will be bidding and/or does purchase.

Buyer agrees to accept assets purchased "AS IS," WITH "ALL FAULTS" AND "WITH REMOVAL AT BUYER'S RISK AND EXPENSE." THE AUCTIONEER EXPRESSLY DISCLAIMS ON THE PART OF THE

AUCTIONEER AS AGENT AND THE SELLER, ANY WARRANTY AS TO FITNESS OR USABILITY OF ALL THE ASSETS, AND THE BUYER EXPRESSLY WAIVES ANY CLAIM IN RESPECT TO ANY POSSIBLE FUTURE USE OF ANY ASSET PURCHASED FOR ANY PURPOSE WHATSOEVER.

The buyer does hereby assume and does agree to indemnify and hold the auctioneer harmless from any future claim which shall pertain to the fitness or use of that asset as being purchased. Riggers, movers, electricians and buyers performing work at the Auction Site must provide PMI with evidence of insurance. The insurance coverage must be at a level acceptable to PMI and to the seller. PMI reserves the right to withdraw items, alter the order of the sale, accept bids from the seller, and group lots as it may deem appropriate. This auction may include consignment items.

Although all information has been obtained from sources deemed reliable, the auctioneer and seller make no warranty or guarantee, expressed or implied, as to the accuracy of the information herein contained, or contained in our catalog. It is for this reason that buyers should avail themselves of the opportunity to make inspection prior to the auction. Although it is not likely, auction sales are subject to cancellation or postponement. Kindly contact auctioneer prior to attendance.

These terms and conditions may be modified or supplemented by language in the catalog available at the sale site or by announcement at the start of the sale. Bidders should be attentive to those announcements and to the catalog language.

2008



INTERNATIONAL PROSTAR EAGLE TRUCK TRACTOR

A/C REPLACED
2016



53" UTILITY REEFER TRAILER



ISUZU NPR CARGO BOX TRUCK

SLEEPER TRUCK TRACTOR

INTERNATIONAL PROSTAR EAGLE, 2008, Cummins ISX435ST engine, transmission recently replaced and engine repaired, 100,000 miles since replacement and repair work completed, VIN 2HSCUAPR89C107144.

GOOSENECK TRAILER

2013 BIG TEX MDL. 25GN, 25' flatbed, 8' wide, dual axle, 5' rear flip down ramps, VIN 16VGX2526D2671364.

REEFER TRAILER

2004 53' UTILITY TRAILER MFG., A/C replaced 2016 w/Carrier X2 2500R unit, 15,507 hours, 65,000 GVWR, 13'6" ht., VIN 1UYVS25344M220448.

CARGO BOX TRUCK

2006 ISUZU NPR, 5.2L diesel, 217,576 miles, VIN JALB4B16967022945.

CAR HAULER SEMI-TRAILER

2015 KAUFMAN MINI-5, 5-car, 44', triple axle, 25,000 GVWR, VIN 5VGFE443XGL001352.

**LOCATION 7
TOWITHOUSTON, LLC**
9707 SH-36,
ROSENBERG, TEXAS 77471

INSPECTION: Monday & Tuesday,
May 15 & 16, 9:00 A.M. to 4:00 P.M.
Each Day.



2013 BIG TEX GOOSENECK TRAILER



KAUFMAN MINI-5 CAR HAULER

2013

2015

2010



SUPERTEC G20P-50NC CYLINDRICAL GRINDER

AUTOMATIC UNIVERSAL CYLINDRICAL GRINDER

SUPERTEC MDL. G20P-50NC, new 2010, Mitsubishi PLC control, 8" max. grinding dia., 20" btwn. centers, swing down I.D. grinding attachment, S/N GB09013.

VERTICAL MACHINING CENTER

KENT MDL. JM450, new 2005, Anilam Mdl. 6000M control, 17" X, 13.8" Y, 13.8"-Z-axis travels, S/N 0804058.

CNC BED MILL

BIRMINGHAM MDL. B3VS, Centroid M-400 control, 12" x 60" tbl., 5 HP, 40 taper, pwr. draw bar, S/N 091881.

INDUCTION HEATER

RADYNE UNIPOWER UP16-6-30, 6 kW, 30KH.



BIRMINGHAM CNC BED MILL



RADYNE UNIPOWER INDUCTION HEATER

**LOCATION 8
METAL SAWING
TECHNOLOGIES**
9502 E. HARDY,
HOUSTON, TEXAS 77093
INSPECTION: By Appointment Only. Contact
Ken Oyer (713) 697-1605 for Appointment.



KENT VERT. MACHINING CENTER

**WEDNESDAY, MAY 17 • 10:00 A.M.
LIVE ONLINE WEBCAST (NO ONSITE BIDDING)**

FOR BIDDING AT THIS AUCTION.
Go to www.pmi-auction.com and click on **BidSpotter** or **proxibid** on our calendar page for this auction sale.



15" X 54" STANDARD MODERN LATHE



WELLSAW 1318 HORZ. BANDSAW



HYDRAULIC POWER UNIT



WIDE ASSORTMENT OF HYDRAULIC CYLINDERS



HYDRAULIC TEST UNIT



REXROTH PORTABLE HYDRAULIC TEST UNIT



WIDE ASSORTMENT OF HYDRAULIC CYLINDERS

LOCATION 9
Hydraulic Repair Shop Closing
ALL STAR HYDRAULIC
5646 RANSOM STREET,
HOUSTON, TEXAS 77087
INSPECTION: Monday & Tuesday, May 15 & 16,
9:00 A.M. to 4 P.M. & Morning of Sale.

ENGINE LATHE
STANDARD MODERN 15" X 54", 12" 4-jaw chuck, taper attachment, steadyrest.
VERTICAL TURRET MILLS
ACER ULTIMA CNC MILL MDL. ULTIMA-3VKH, 10" x 54", Acu-Rite control, pwr. draw bar, vise, S/N 96060530 (1996).
BRIDGEPORT STEP PULLEY, 9" x 42", w/pwr. feed, 1 HP head, w/vise, S/N J27987.
HORIZONTAL BANDSAW
WELLSAW MDL. 1318, 13" x 18" cap., 3 HP, 1" blade size, S/N 3752.
HYDRAULIC PARTS INVENTORY
WIDE ASSORTMENT OF HYDRAULIC CYLINDERS; GEAR BOXES; VALVE BODIES; SOLENOIDS; SEALS; HPUs; ELECTRIC MOTORS; PUMPS; POWER PACKS; HOSES; FITTINGS; HARDWARE & MORE.
HOSE CRIMPING MACHINES
PROCRIMP MDL. 1380, w/assorted dies, cut off saw, on stand; AERO QUIP MDL. FT1330 w/assorted dies.
HYDRAULIC TEST UNIT
REXROTH PORTABLE HYDRAULIC TEST UNIT, in a 20' sea container, consisting of (3) approx. 200 HP motors, control cabinet, hyd. fluid tank. 50 hz. (out of service).



HUGE HYDRAULIC PARTS INVENTORY



ACER ULTIMA CNC VERT. TURRET MILL



BRIDGEPORT VERT. TURRET MILL



PROCRIMP 1380 HOSE CRIMPER



AERO QUIP HOSE CRIMPING MACHINE



CATERPILLAR DP-50 10,000-LB. CAP. DIESEL FORKLIFT



SAMPLE VIEW OF HYDRAULIC TRUCK JACKS

LOCATION 9, CONT.



RAYMOND 4,000-LB. CAP. STAND BEHIND ELECTRIC FORKLIFT



CROWN 3,000-LB. CAP. ELECTRIC ORDER PICKER



SAMPLE VIEW OF POWER HAND TOOLS

SHOP SUPPORT EQUIPMENT

(2) MOBILE MASTER COOL PORTABLE AIR CONDITIONERS; (2) PORT-A-COOL 2000; KEROSENE HEATER; SHOP VACS; ELECTRIC POWER TOOLS INCL. MAGNETI C BASE DRILL, PORTA BANDSAW, SAWZALL RECIPROCATING SAWS; ANGLE GRINDERS; CHOP SAWS; SKILL SAW; PARTS CLEANER; RIDGID MDL. 535 PIPE THREADER; COMPRESSORS; PORTABLE AIR COMPRESSOR, Black Max 3 HP; (2) PORTABLE PRESSURE WASHERS; (2) 600 GAL. PLASTIC TANKS; STEP LADDERS, as tall as 12'.

MATERIAL HANDLING

(7) WALL MOUNTED JIB CRANES, approx. 1/2 T. cap., approx. 12' long w/electric chain hoists; HEAVY DUTY HYDRAULIC TRUCK JACKS.

WELDING EQUIPMENT

MILLER MDL. MAXSTAR 150STL PORTABLE TIG WELDER; MILLER MDL. SRH-333 WELDER, S/N HD727983; MILLER MDL. MP-30E WELDER, w/Miller wire feeder, on cart w/accessories, S/N JD691492.

PLASMA CUTTER

MILLER MDL. SPECTRUM 625 PLASMA CUTTER, S/N H420305P.

FORKLIFTS

CATERPILLAR 10,000-LB. BASE CAP. MDL. DP50, diesel pwr., 187" lift ht., 3-stage mast, side shift, S/N 6CM10307.
 RAYMOND MDL. 902-4D-E4RTN-40-56-122-10 1/2 4,000-LB. BASE CAP. STAND BEHIND ELECTRIC, S/N 902-ERTN-893.

ELECTRIC ORDER PICKER

CROWN MDL. 30SP36TT, 3,000-LB. CAP., electric, 180" lift ht., S/N W-46377.

UTILITY TRUCK

TAYLOR-DUNN, 6' bed, gas pwr.



VERT. AIR COMPRESSOR



MILLER MAXSTAR 150STL PORTABLE TIG WELDER



RIDGID 535 PIPE THREADER



TAYLOR-DUNN UTILITY TRUCK



SAMPLE VIEW OF POWER HAND TOOLS



PORTABLE AIR COMPRESSOR



MILLER SPECTRUM 625 PLASMA CUTTER



MILLER SRH-333 WELDER



E-Z GO GOLF CART



DURA 7,000-LB. CAP. HYDRAULIC CAR LIFT

LOCATION 9, CONTINUED



KOHLER BACKUP GENERATOR

GOLF CART
E-Z GO, w/utility bed, gas pwr., 2-seater.
HYDRAULIC CAR LIFT
DURO 7,000-LB. CAP, part no. 262120 BMP10, S/N 008690.
GOLD WING MOTORCYCLE PARTS
ASSORTED GOLD WING MOTORCYCLES; GOLD WING PARTS; ACCESSORIES FOR APPROX. 1976 GL1000 GOLD WINGS, w/side car and trailer.



ASSORTED GOLD WING MOTORCYCLE PARTS

BACKUP GENERATOR
KOHLER MDL. 60R7272 POWER SYSTEM, fast response 60, 722 H.O.M., natural gas, Ford engine Mdl. LSG-875i-6005-A, S/N 356724.

OFFICE FURNITURE
ASSORTED DESKS; COPY MACHINES; KITCHEN AREA ITEMS; SLOT MACHINE; RODEO MEMORABILIA.

**WEDNESDAY
MAY 17
10:00 A.M.**
LIVE ONLINE WEBCAST
(NO ONSITE BIDDING)

INSPECTION:
Varies By Location.

FOR BIDDING AT THIS AUCTION.
Go to www.pmi-auction.com and click on **BidSpotter** or **proxibid** on our calendar page for this auction sale.

DON'T MISS THIS SALE

Read Partial Terms & Conditions on Page 9



LOCATION 10
MARTIN GAMEZ
1122 WEST 5TH STREET, TYLER, TEXAS 75702
INSPECTION: Monday & Tuesday, May 15 & 16, 9:00 A.M. to 4:00 P.M. & Morning of Sale.

HAMMER MILL
JACOBSON HAMMER MILL MDL. 2410-415, 3-phase, 50 HP, 480 v., S/N 36638 (rebuilt in 2018).

LOCATION 11

Surplus to the Ongoing Operations of

FABCORP, INC.

Equipment Stored at Following Location:

MEI RIGGING

13500 JOHN F. KENNEDY BLVD., HOUSTON, TEXAS 77039

INSPECTION: By Appointment Only. Contact Jeff Niemann at (832) 309-4087 for Appointment.

WEDNESDAY, MAY 17

10:00 A.M.

**LIVE ONLINE WEBCAST
(NO ONSITE BIDDING)**

FOR BIDDING AT THIS AUCTION.

Go to www.pmi-auction.com and click on
BidSpotter or **proxibid**

on our calendar page for this auction sale.

CNC VERTICAL MACHINING CENTERS



AWEA MDL. VP2012 CNC GANTRY TYPE, new 2000, Fanuc 18M CNC control, 78.75" X, 47.75" Y, 30" Z-axis travels, 24-pos. ATC, plain tbl., S/N 132 (Location 11: MEI Rigging, 13500 John F. Kennedy Blvd., Houston, TX 77039).



AWEA MDL. VP2012 CNC GANTRY TYPE, new 1999, Fanuc Series 18M CNC control, approx. 5 x 8' tbl., electromagnetic chuck, 78.5" X, 47.75" Y, 30" Z-axis travels, 24-pos. ATC, S/N 9083 (Location 11: MEI Rigging, 13500 John F. Kennedy Blvd., Houston, TX 77039).

LOCATION 2

Surplus to the Operations of Area

MANUFACTURING COMPANIES & OTHERS

Moved for Convenience of Sale to

SNS INDUSTRIAL MACHINERY MOVERS, INC.

13991 HENRY HARRIS ROAD,
CONROE, TEXAS 77306

INSPECTION: Monday & Tuesday, May 15 & 16,
9:00 A.M. to 4:00 P.M. Each Day.

LOCATION 5

MOORE FABRICATION

901 BAY AREA BLVD.,
HOUSTON, TEXAS 77058

INSPECTION: By Appointment Only.

Contact Jordan White (713) 643-7477, ext. 302 for Appointment.

**JUST ADDED TO
LOCATION 2**



CUSHMAN TRUKSTER FLATBED UTILITY VEHICLE, 3-cyl. water cooled gas engine, 3-spd. transmission w/reverse, LED lights, 2 wheel drive, PA and siren.

JUST ADDED TO LOCATION 5



**TESA TECHNOLOGY MDL. TESA-HITE 400
DIGITAL HEIGHT GAUGE**



ACCU-SCOPE DIGITAL MICROSCOPE CAMERA