



# ONLINE TIMED AUCTION

**PLANT CLOSING - EVERYTHING MUST BE SOLD**

**HIGH TECH LATE MODEL Q.C. EQUIP.; COMPLETE MAINTENANCE TOOLROOM; HUGE SELECTION OF M.R.O.; MATERIAL HANDLING; FORKLIFTS; AIR COMPRESSORS; COOLING TOWERS; MORE!**



**2019**

JENOPTIK OPTICLINE C314 LASER MEASURING MACHINE



FANUC SPINDLE DRIVES



**2 AVAILABLE**

YALE ELECTRIC FORKLIFT W/HYD. ROTATOR



JLG 2530ES ELECTRIC SCISSOR LIFT

**2 AVAILABLE**



MITUTOYO SJ-410 ROUGHNESS MEASURING MACHINE

**WEDNESDAY, DECEMBER 6  
TIMED ONLINE ONLY  
BIDS START CLOSING AT 10:00 A.M. CST**

**NT TECHNO USA**  
3124 MONTAGUE CENTER ROAD,  
OXFORD, NORTH CAROLINA 27565

18% BUYER'S PREMIUM WILL APPLY

**TIMED ONLINE BIDDING ONLY  
(NO ONSITE BIDDING):  
YOU MUST REGISTER IN ADVANCE  
FOR ONLINE BIDDING AT THIS AUCTION.**  
Go to [www.pmi-auction.com](http://www.pmi-auction.com) and  
click on **BidSpotter**  
on our calendar page for this  
auction sale.



MILLER MIG WELDER W/FEEDER



(2) ATLAS COPCO GA7-FF ROTARY SCREW AIR COMPRESSORS

**INSPECTION:**

Monday,  
December 4  
& Tuesday,  
December 5,  
9:00 A.M.  
to 4:00 P.M.

**DON'T MISS  
THIS SALE!**

Read Partial Terms  
& Conditions  
on Back Page



WASINO MDL. LE-19K ENGINE LATHE

Sale  
Conducted  
By:

**PLANT & MACHINERY INC.**

AUCTIONEERS • APPRAISERS • LIQUIDATORS • REAL ESTATE

1304 Langham Creek Drive, Suite 454, Houston, Texas 77084

PHONE: (713) 691-4401

FAX: (713) 672-7905

E-MAIL: [pmi@pmi-auction.com](mailto:pmi@pmi-auction.com) • WEBSITE: [www.pmi-auction.com](http://www.pmi-auction.com)

PMI NC Lic. #5789 • Ron Moore, NC Lic. #5788 • HOUSTON • DALLAS • ST. LOUIS

In Conjunction With:



1903

**Gordon  
Brothers**



JENOPTIK OPTICLINE C314 LASER MEASURING MACHINE



TOYO TTI-300E GEAR MEASURING MACHINE



STRUERS DISCOTOM-60 SAMPLE SAW



MITUTOYO C-3200 CONTRACER



MACRO/VICKERS HARDNESS TESTER

## QUALITY CONTROL LABORATORY

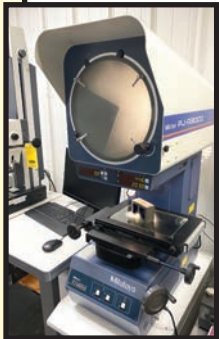
JENOPTIK OPTICLINE C314 LASER MEASURING MACHINE, new 2019, 140mm max. dia., 300mm max. length, w/computer and software; MITUTOYO MDL. RA-2000 DH ROUNDNESS CHECKING MACHINE; MITUTOYO MDL. SV-3000H4 SHAPE/AREA MEASURING MACHINE; MITUTOYO MDL. PJ-A3010F PROFILE PROJECTOR; MITUTOYO MDL. HV-113 MACRO/VICKERS HARDNESS TESTER; MITUTOYO MDL. HV-112 MACRO/VICKERS HARDNESS TESTER; MITUTOYO CV-33200H4 SHAPE MEASURING INSTRUMENT; (2) MITUTOYO SJ-410 ROUGHNESS MEASURING MACHINES; TOYO TTI-300E GEAR MEASURING MACHINE; STRUERS DISCOTOM-60 SAMPLE SAW; STRUERS CITOPRESS-20 SAMPLE MOUNTING PRESS; STRUERS LABO-PRESS-1 SAMPLE MOUNTING PRESS; SHIMAMOTO SMC802D SAMPLE SAW; WIDE SELECTION OF GRANITE SURFACE PLATES ON STANDS; HIGH QUALITY VERTICAL AND HORIZONTAL BENCH CENTERS; LARGE SELECTION OF HAND MEASURING GAGES; MITUTOYO C-3200 CONTRACER; MITUTOYO SV-C2000 SURFACE ROUGHNESS MEASURING MACHINE, MORE!



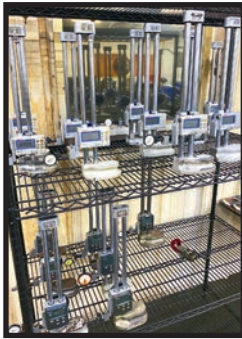
SAMPLE VIEW OF BENCH CENTERS



SAMPLE VIEW OF HAND GAGES



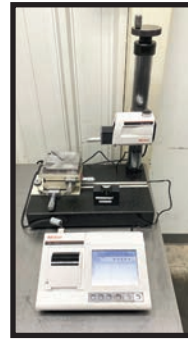
MITUTOYO PROFILE PROJECTOR



DIGITAL HEIGHT GAGES



MITUTOYO SV-C2000 SURFACE ROUGHNESS MEASURING MACHINE



(2) MITUTOYO SJ-410 ROUGHNESS MEASURING MACHINES



STRUERS LABO PRESS

**DON'T MISS THIS SALE!**



WASINO MDL. LE-19K ENGINE LATHE



NIAGRA MDL. 1B-25-5-6 MECHANICAL PRESS BRAKE

## MAINTENANCE DEPARTMENT

YAMAGUCHI MDL. YMV-90W BED TYPE VERTICAL MILLING MACHINE, w/DR0; WASINO MDL. LE-19K ENGINE LATHE, w/DR0; AMADA MDL. SGH-63A AUTOMATIC HYDRAULIC SURFACE GRINDER, w/DR0; ATLANTIC MDL. 4000 JIG BORER; JET MDL. HVBS-7MW HORIZONTAL BANDSAW; NIAGARA MDL 1B-25-5-6 MECHANICAL PRESS BRAKE; NATIONAL HYDRAULIC SHEAR; DAKE H-FRAME HYDRAULIC PRESS; (2) RIDGID MDL. 535 PIPE THREADERS; MILLER DELTA-FAB MIG WELDING MACHINE; MILLER SYNCROWAVE TIG WELDING MACHINE; LARGE STOCK OF ACCESSORIES, RACKS AND RACKS OF MACHINE TOOLING, CHUCKS, AND RAW MATERIALS; MORE!



YAMAGUCHI BED TYPE VERTICAL MILLING MACHINE



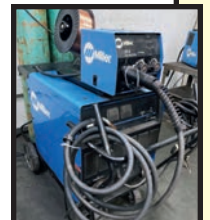
NATIONAL HYDRAULIC SHEAR



AMADA MDL. SGH-63A AUTOMATIC HYDRAULIC SURFACE GRINDER



KITAGAWA POWER CHUCKS



MILLER MIG WELDER W/FEEDER



(2) ATLAS COPCO GA7-FF ROTARY SCREW AIR COMPRESSORS



(5) INGERSOLL RAND ROTARY SCREW AIR COMPRESSORS



BAC & MARLEY COOLING TOWERS



FANUC SPINDLE DRIVERS



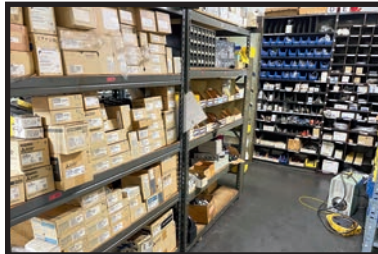
SAMPLE VIEW OF AIR CYLINDERS

### M.R.O. CRIB

HUGE ASSORTMENT OF FANUC AND OSP (OKUMA) SPINDLE DRIVES; AXIS AMPLIFIERS; SERVO MOTORS; BEARINGS; PUMPS; AIR CYLINDERS; PNEUMATIC SOLENOIDS; GEARBOXES; MOTORS; TRANSFORMERS; BALL SCREWS AND MECHANICAL REPAIR PARTS FOR OKUMA AND MURATA CNC LATHES AND FANUC DRILLING MACHINES; BELTS; HOSES; FITTINGS OF ALL TYPES; KEYENCE AND FUJI ELECTRIC HARDWARE; MITSUBISHI PROGRAMMABLE CONTROLLERS; **THOUSANDS OF ITEMS TO BE SOLD!**



SAMPLE VIEW OF FANUC SERVO MOTORS



SAMPLE VIEW OF PROGRAMMABLE CONTROLLERS AND ELECTRONIC PARTS



INGERSOLL RAND AIR DRYER

### PLANT SUPPORT EQUIPMENT

(5) INGERSOLL RAND HP ROTARY SCREW AIR COMPRESSORS AND DRYERS; (2) ATLAS COPCO HP GA7-FF ROTARY SCREW AIR COMPRESSORS; (2) BAC COOLING TOWERS; SPX COOLING TOWER; NSS CHAMP MP-3529RB ELECTRIC RIDING FLOOR SCRUBBER; LAWNMOWER; MORE!



NSS CHAMP ELECTRIC RIDING FLOOR SCRUBBER



YALE ELECTRIC FORKLIFT W/HYDRAULIC ROTATOR



RAYMOND DSS-350 ELECTRIC FORKLIFT



LANTECH 65" PALLET WRAPPER



YALE ELECTRIC FORKLIFT W/HYDRAULIC ROTATOR

### MATERIAL HANDLING EQUIPMENT

(2) YALE ELECTRIC FORKLIFTS W/HYD. ROTATORS; RAYMOND DSS-350, 3,500-lb. cap. stand-up electric forklift; JLG 2530ES ELECTRIC SELF-PROPELLED SCISSOR LIFT, S/N DSS-06-06797; JLG 20MVL ELECTRIC SELF-PROPELLED SCISSOR LIFT; OVER (40) JESCO 1/2 CU. YD. SELF-DUMPING CHIP HOPPERS ON CASTERS; LANTECH 65" TBL. Q300 PALLET WRAPPER, new 2011; BARREL HANDLERS; HAND TRUCKS; PALLET JACKS; CARTS; MORE!



DUMP HOPPERS

OVER 40



JLG 20MVL SCISSOR LIFT



JLG 2530ES SCISSOR LIFT

**INSPECTION:** Monday, December 4 & Tuesday, December 5, 9:00 A.M. to 4:00 P.M.

**DON'T MISS THIS SALE!**

**PLANT & MACHINERY INC.**  
AUCTIONEERS • APPRAISERS • LIQUIDATORS • REAL ESTATE

P.O. Box 218568  
Houston, TX 77218-8568

DATED MATERIAL - PLEASE DELIVER

**PLANT CLOSING -  
EVERYTHING MUST  
BE SOLD**

**HIGH TECH LATE MODEL  
Q.C. EQUIP.; COMPLETE  
MAINTENANCE TOOLROOM;  
HUGE SELECTION OF M.R.O.;  
MATERIAL HANDLING;  
FORKLIFTS; AIR COMPRESSORS;  
COOLING TOWERS; MORE!**



**WEDNESDAY, DECEMBER 6**  
**TIMED ONLINE ONLY • BIDS START CLOSING AT 10:00 A.M. CST**



**ATTENTION: PLANT MANAGER  
OR EQUIPMENT BUYER**

Presorted  
First Class Mail  
U.S. Postage  
PAID  
Eugene, Oregon  
Permit No. 17

**ONLINE TIMED AUCTION**

**TIMED ONLINE BIDDING ONLY  
(NO ONSITE BIDDING): YOU MUST REGISTER IN  
ADVANCE FOR ONLINE BIDDING  
AT THIS AUCTION.**  
Go to [www.pmi-auction.com](http://www.pmi-auction.com) and click on  
**BidSpotter**  
on our calendar page for this auction sale.

**WEDNESDAY, DECEMBER 6**  
**TIMED ONLINE ONLY • BIDS START  
CLOSING AT 10:00 A.M. CST**

**INSPECTION:**  
Monday, December 4 &  
Tuesday, December 5,  
9:00 A.M. to 4:00 P.M.  
**18% BUYER'S PREMIUM WILL APPLY**

**ONLINE REGISTRATION**  
Register to bid at **BidSpotter**

1. Use the link to [Bidspotter.com](http://Bidspotter.com) on PMI's website calendar. [www.pmi-auction.com](http://www.pmi-auction.com) DO IT NOW!
2. This auction may require a Cash, or credit card, or debit card, 100% refundable deposit. If by credit or debit card, it can be added through the Bidspotter.com fully secure and PCI compliant registration process and will be assessed a 100% refundable \$3,000 (US Bidder) or a \$10,000 (Foreign Bidder) deposit in order to be approved to bid online with this auction. Cash deposits can be made by wire transfer. **DON'T WAIT.** If you are unsuccessful in the auction, the refund of your credit/debit card deposit will occur shortly after the auction ends. Cash deposits will be expedited as well.

If you need assistance, don't hesitate to call  
(713) 691-4401.  
**ALL BIDS ARE SUBJECT TO AN  
18% BUYER'S PREMIUM.**

**PARTIAL TERMS & CONDITIONS:**  
An 18% Buyer's Premium Will Apply.  
Everything will be sold to the highest bidder or bidders for cash in accordance with the auctioneer's Customary Terms of Sale, copies of which will be posted on our website.  
**ALL PAYMENTS MUST BE MADE BY CASHIER'S CHECK, WIRE TRANSFER OR COMPANY CHECK WITH BANK LETTER GUARANTEEING PAYMENT TO PLANT & MACHINERY INC.**  
Here is an example of what your letter should be: Mr. "Customer Name" is a customer of this bank. This bank will guarantee unqualified payment to PMI on the account listed herein up to the amount of \$\_\_\_\_\_. This letter is good until January 8, 2024.  
In default of payment of bills in full within the time therein specified, the Auctioneer in addition to all other remedies allowed by law, may retain all monies received as deposit or otherwise, as liquidated damages. All items must be removed by the time announced at the start of the sale.  
Lots not paid for and/or removed within the time allowed may be resold at public or private sale without further notice, and any deficiency, together with all expenses and charge of resale, will be charged to the defaulting purchaser.  
The buyer acknowledges that he or an agent has inspected all of the assets upon which he will be bidding and/or does purchase.  
Buyer agrees to accept assets purchased "AS IS," WITH "ALL FAULTS" AND "WITH REMOVAL AT BUYER'S RISK AND EXPENSE." THE AUCTIONEER EXPRESSLY DISCLAIMS ON THE PART OF THE

AUCTIONEER AS AGENT AND THE SELLER, ANY WARRANTY AS TO FITNESS OR USABILITY OF ALL THE ASSETS, AND THE BUYER EXPRESSLY WAIVES ANY CLAIM IN RESPECT TO ANY POSSIBLE FUTURE USE OF ANY ASSET PURCHASED FOR ANY PURPOSE WHATSOEVER.  
The buyer does hereby assume and does agree to indemnify and hold the auctioneer harmless from any future claim which shall pertain to the fitness or use of that asset as being purchased. Riggers, movers, electricians and buyers performing work at the Auction Site must provide PMI with evidence of insurance. The insurance coverage must be at a level acceptable to PMI and to the seller. PMI reserves the right to withdraw items, alter the order of the sale, accept bids from the seller, and group lots as it may deem appropriate. This auction may include consignment items.  
Although all information has been obtained from sources deemed reliable, the auctioneer and seller make no warranty or guarantee, expressed or implied, as to the accuracy of the information herein contained, or contained in our catalog. It is for this reason that buyers should avail themselves of the opportunity to make inspection prior to the auction. Although it is not likely, auction sales are subject to cancellation or postponement. Kindly contact auctioneer prior to attendance.  
These terms and conditions may be modified or supplemented by language in the catalog available at the sale site or by announcement at the start of the sale. Bidders should be attentive to those announcements and to the catalog language.