



# AUCTION

**10 LOCATIONS: TEXAS, LOUISIANA, ILLINOIS, NEW JERSEY, W. VIRGINIA**

Featuring: Beam Drill/Saw Line; CNC & Manual Machine Tools & Fabricating Equip.; Horiz. & Vert. Bandsaws; Welding Power Sources & Feeders; Conex Boxes; (150) NEW Industrial Fans; Support; (20+) Forklifts; MORE!



FICEP ORIENT 1001 DFB BEAM DRILL/SAW LINE

**2010**



CATERPILLAR 13,000-LB. BASE CAP. DIESEL FORKLIFT



LARGE QUANTITY WELDERS

**WEDNESDAY, JUNE 28 • 10:00 A.M.**  
**LIVE ONLINE WEBCAST ONLY (NO ONSITE BIDDING)**

FOR BIDDING AT THIS AUCTION.

Go to [www.pmi-auction.com](http://www.pmi-auction.com) and click on **BidSpotter** or **proxibid** on our calendar page for this auction sale.

**INSPECTION:** Varies By Location. See Inside for Details.

**18% BUYER'S PREMIUM WILL APPLY**

Read Partial Terms and Conditions on Page 12 of Brochure



HURCO MDL. VMX-50/50T VERTICAL MACHINING CENTER

**2005**



BAYKAL 150 T. X 12' CNC HYDRAULIC PRESSBRAKE

**2007**



HEM 20" X 20" HORIZ. BANDSAW



PACIFIC 1/2" X 12' MDL. 500R12 SHEAR



PANDJIRIS 6,000-LB. CAP. HEADSTOCK/TAILOSTOCK WELDING POSITIONER



48" COMFORT ZONE HIGH VELOCITY BELT DRIVE FAN (NEW IN BOX)

**50 AVAILABLE**

Sale Conducted By:

**PLANT & MACHINERY INC.**

AUCTIONEERS • APPRAISERS • LIQUIDATORS • REAL ESTATE

Ron Moore, TX Lic. #7314, LA Lic. #851 • PMI LA Lic. #AB-396

**HOUSTON • DALLAS • ST. LOUIS**

Headquarters:

1304 Langham Creek Drive, Suite 454  
Houston, Texas 77084

PHONE: (713) 691-4401

FAX: (713) 672-7905

E-MAIL: [pmi@pmi-auction.com](mailto:pmi@pmi-auction.com)

WEBSITE: [www.pmi-auction.com](http://www.pmi-auction.com)

## LOCATION 1

Surplus to the Ongoing Operations of

### HUNTINGTON

### STEEL & SUPPLY CO.

100 3RD AVENUE,

HUNTINGTON, W. VIRGINIA 25701

INSPECTION: By Appointment Only. Contact Greg McLin at (423) 948-0105 for Appointment.

## BEAM DRILL/SAW LINE

**FICEP ORIENT 1001 DFB BEAM DRILL LINE**, new 2010, Ficep Mitrol MINOSSE 4.48 control software, 44" x 44" x 40' cap., 20 HP, 80–2,500 RPM variable spd. rotary head; 4" max. drilling thickness, S/N 32655, includes manuals, tooling, tool holders, infeed roller conveyors and pincher arm, plus various other new spare parts. (In-feed transfers not included).

**FICEP SCS100 HORIZONTAL BANDSAW**, new 2010, 40" x 17-3/4" max. @ 90 deg., 13-3/4" x 13-3/4" max. @ 60 deg., 24-3/8" x 17-3/4" max. @ 45 deg., 7-1/2 HP motor, 36–328 FPM band blade spd., S/N 32747, includes manuals and (3) extra saw blades. (It does not come w/any outfeed transfers or roller conveyors).

(This line has already been disassembled and is ready to be removed).



FICEP ORIENT 1001 DFB BEAM DRILL/SAW LINE



FICEP SCS100 HORIZONTAL BANDSAW



2005



## LOCATION 2

### ABBOTT MACHINE COMPANY

700 W BROADWAY, ALTON, ILLINOIS 62002

INSPECTION: By Appointment Only. Contact Mike St. Peters at (618) 465-1898 for Appointment.

## VERTICAL MACHINING CENTER

**HURCO MDL. VMX-50/50T**, new 2005, Ultimac CNC control, 59" x 26" tbl. size, 50"X, 26"Y, 24" Z-axis travels, 24 HP, 8,000 RPM, CAT 50, 24-pos. ATC, coolant through spd., chip conveyor, S/N H-55013.

INSPECTION: Varies By Location.  
See Each Location for Details.

## LOCATION 3

Surplus to the Ongoing Operations of  
**FIVE STAR METALS INC.**  
637 WINDFERN ROAD,  
HOUSTON, TEXAS 77064

**INSPECTION:** Monday & Tuesday,  
June 26 & 27 by Appointment Only.  
Contact Debbie Holbird at (713) 466-1174  
for Appointment.

### DUAL COLUMN HIGH SPEED PRODUCTION HORIZONTAL BAND SAW

**HEM 20" X 20" MDL. DC-20HA,** 20" round x 20" flat cap., 1.5" blade width, 10 HP blade motor, 72-400 SFPM, 5 HP hydraulic system, coolant, semi-auto. or fully auto. operation, pwr. clamping and pwr. feed, front mount operator console, S/N 90550.



**MARVEL MDL. MV525PC/1**  
VERTICAL BANDSAW



**HEM MDL. V125M** VERTICAL BANDSAW

## LOCATION 4

Surplus to the Ongoing Operations of  
**HOUSTON METAL CUTTING**  
6938 BARNEY ROAD,  
HOUSTON, TEXAS 77092

**INSPECTION:** By Appointment Only.  
Contact Austin Zimmerman at (281) 610-7990.

### VERTICAL BANDSAWS

**MARVEL MDL. MV525PC/1,** new 2010, 21" x 22.5" cap., 15 HP, 1.5" blade size, shuttle tbl., replaced fluid drive motor, S/N MV52510103PC.

**HEM MDL. V100LA-2,** 18" x 20" cap. @ 90 deg., 5 HP, S/N 455095.

**HEM MDL. V125M,** 18" x 25" cap. @ 90 deg., 7.5 HP, S/N 270788.



**HEM MDL. V100LA-2** VERTICAL BANDSAW

## LOCATION 5

Assets Located at  
**H2 BRANDS GROUP HOME & HARDWARE**  
324A HALF ACRE ROAD,  
CRANBURY, NEW JERSEY 08512

**INSPECTION:** By Appointment Only. Contact Rick Crouse at  
(717) 419-0959 for Appointment or Questions About Shipping.

### NEW INDUSTRIAL FANS UNUSED - IN THE BOX

(50) 48" HIGH VELOCITY BELT DRIVE DRUM FAN, Mdl. CZMC48B, 19,500 CFM.

(50) 42" HIGH VELOCITY DIRECT DRIVE DRUM FAN, Mdl. CZMC42, 15,680 CFM.

(50) 30" HIGH VELOCITY STAND FANS, Mdl. CZHVP30, 1,483 CFM.



48" COMFORT ZONE HIGH VELOCITY BELT DRIVE FAN



50  
AVAILABLE



42" COMFORT ZONE HIGH VELOCITY BELT DRIVE FAN



50  
AVAILABLE



30" COMFORT ZONE HIGH VELOCITY PEDESTAL FAN

50  
AVAILABLE



**WEDNESDAY, JUNE 28 • 10:00 A.M.**  
**LIVE ONLINE WEBCAST ONLY (NO ONSITE BIDDING)**

FOR BIDDING AT THIS AUCTION. Go to [www.pmi-auction.com](http://www.pmi-auction.com)  
and click on **BidSpotter** or **proxibid** on our calendar page  
for this auction sale.

## LOCATION 6

Surplus to the Ongoing Operations of  
**TRI R ERECTING & OTHERS**

26535 FM 2978, MAGNOLIA, TEXAS 77354

INSPECTION: Open House, June 26 & 27, 9:00 A.M. to 4:00 P.M.

**WEDNESDAY, JUNE 28 • 10:00 A.M.**

**LIVE ONLINE WEBCAST ONLY (NO ONSITE BIDDING)**



BAYKAL 150 T. X 12' CNC HYDRAULIC PRESSBRAKE



SAMPLE VIEW OF WIDE SELECTION WELDERS

### HYDRAULIC PRESSBRAKE

BAYKAL 150 T. X 12' MDL. APHS3706X150 COMPACT, new 2007, EC4 control, CNC backgauge, 10.2" max. stroke, S/N 11835.

### AUTOMATIC HORIZONTAL BANDSAWS

HEM SAW MDL. DC-14HA, 14" x 14", dual column, updated controls, S/N 781001.

HYD-MECH MDL. H-12A, 12" x 12" cap., PLC100 control, 5 HP, (2) bundling attachment., auto. feed, S/N N.A.

### WELDING POWER SOURCES & ACCESSORIES

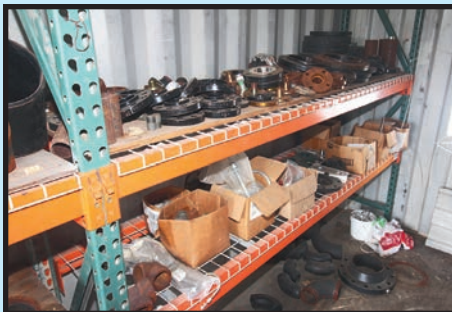
(3) MILLER INVISION 456P, (2) w/wire feeders; MILLER DIMENSION NT450, w/60 series feeder; (2) LINCOLN FLEXTAC 350; (2) LINCOLN CV300; MILLER DELTAWELD 302, w/70 series wire feed; MILLER DELTAWELD 452, w/D74D wire feed; LINCOLN V275; LINCOLN TIG 300; NELSON STUD WELDER MDL. 4800; SUITCASE WELDERS AND WIRE FEEDERS; LINCOLN LN8 WIRE FEEDER.

### SHOP SUPPORT EQUIPMENT

FAMCO MDL. 18-22 SHEAR; 6" X 18" ENCO SURFACE GRINDER; GRAYMILLS PARTS CLEANER, BALDOR DOUBLE END GRINDER; PATRON ELECTRIC HEATERS; AIR REGULATORS; DIGITAL SCALE; MAX AC36B WINCHES; ROD OVENS; WIDE SELECTION OF HAND TOOLS!



HEM SAW MDL. DC-14HA HORIZ. BANDSAW



UNUSED REPLACEMENT PARTS



LINCOLN LN25 PRO WIRE FEEDERS



VIEW OF CONEX BOXES



1,000'S OF SUPPLY PARTS



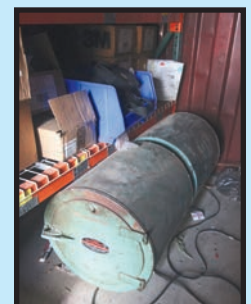
MILLER DIMENSION NT450



SAMPLE VIEW OF MILLER ARC REACH SMARTWIRE FEEDERS



LARGE QUANTITY FITTINGS



DRY ROD OVENS

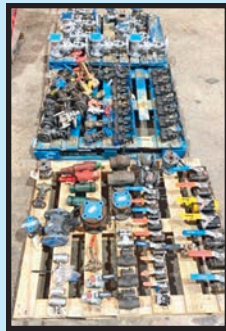
**LOCATION 6, CONTINUED**



HYD-MECH MDL. H-12A AUTOMATIC HORIZONTAL BANDSAW



PNEUMATIC JET FAN



HUGE QUANTITY VALVES



JMT HB6 1,320-LB. WELDING POSITIONER

**FORMERLY THE ASSETS OF WORLD CLASS INDUSTRIAL CONTRACTOR, FULL-SERVICE MECHANICAL CONSTRUCTION, PIPING & MAINTENANCE**

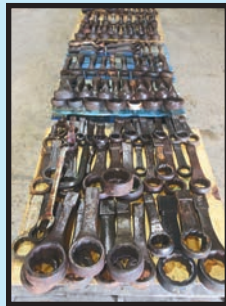
**(5) CONEX BOXES W/CONTENTS: (5) MILLER FIELDPRO SMART FEEDERS; (5) MILLER XMT 350CC/CV WELDING MACHINES; (4) LINCOLN ELECTRIC LN-25 PRO SUITCASE WIRE FEEDERS; JMT HB6 1320-LB. WELDING POSITIONER; HUGE SELECTION OF WELDING LEADS AND HOSES, JACK AND ROLLER STANDS; TEXAS PNEUMATIC TX-JF20 JET FANS, HORNS, DIESEL GAS TANKS, TRUCK GAS TANKS AND TOOLBOXES; US CHEMICAL STORAGE FLAMMABLE MATERIAL 20' STORAGE CONTAINER; HUGE SELECTION OF HARDWARE: flanges, pipe fittings, seals, valves, nuts and bolts, stainless and galvanized; 20' CONEX PORTABLE OFFICE, insulated, air conditioned, electrical outlets, much more! See catalog for details.**



FLAMMABLE MATERIAL STORAGE CONTAINER



AIR HORNS



SAMPLE VIEW OF HAMMER WRENCHES



SS FLANGES



MAX AC36B WINCHES



DIESEL FUEL TANK



RACKS AND RACKS OF EQUIPMENT



VIEW OF CONEX BOXES OFFICE CONVERSION AND OTHERS



CRANE FORKS



SAMPLE VIEW OF ROLLER AND JACK STANDS

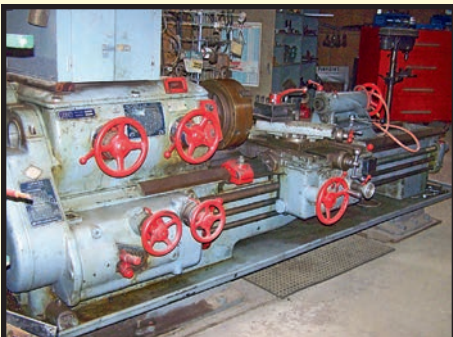
**FOR BIDDING AT THIS AUCTION.**  
 Go to [www.pmi-auction.com](http://www.pmi-auction.com) and click on **BidSpotter** or **proxibid** on our calendar page for this auction sale.



**GIDDINGS & LEWIS FRASER BALL SCREW 4" HORIZ. BORING MILL**



**MONARCH 56" X 84" MDL. 36NN LARGE SWING ENGINE LATHE**



**CERUTI 21"/30" X 60" MDL. L-25 GAP BED ENGINE LATHE**



**DEAN SMITH & GRACE 31"/48" X 216" MDL. 90 GAP BED HOLLOW SPINDLE ENGINE LATHE**

**LOCATION 7**  
Assets Located at  
**PINPOINT MACHINE**  
**1995 HWY. 167, DRY**  
**PRONG, LOUISIANA 71423**  
INSPECTION: June 26 & 27  
by Appointment Only. Contact Richard Rogers at (318) 290-3296 for Appointment.

**HORIZONTAL BORING MILL**

**GIDDINGS & LEWIS FRASER BALL SCREW 4" BORING MILL**, ball screw equipped machine, DRO, rapid controls in X, Y, and Z-axis, joystick selector for travel, coolant system, pwr. feed, pwr. drawbar, 20 HP motor, 50 taper, very nice ways, 48" x 74" tbl. w/1" T-slots, presently on 480 v. 3-phase pwr., 6.9–1,320 RPM, 9 T. tbl. weight cap., hard ways, outriggers are unitized (one-piece) w/machine body, 24"/610mm spdl. travel, 32"/800mm longitudinal travel, 60"/1,500mm vertical travel of head, 60"/1,500mm cross travel, (16) spdl. spds. at 6.39–1,320 RPM, (48) spdl. spds. at 0.0001–0.125 IPR, pwr. rapid traverse all motors at 140 IPM, 20 HP spdl. motor, 10 HP milling feed motor, facing head sells separately, (machine has been removed and in storage, ready to load). **(SEE VIDEOS)**.

**FACING HEAD**

**GIDDINGS & LEWIS (HUMMERT DIXON) FACING HEAD**, 20" facing head for the 4" boring mill.

**BORING MILL ANGLE PLATE**

**LUCAS 4"W. X 10"H.**, 5/8" T-slots, 2-3/4" thk. front plate where work mounts, 4' sq. base.

**ENGINE LATHES**

**MONARCH 56" X 84" MDL. 36NN LARGE SWING**, 50 HP motor, hardened ways, 8–405 RPM (16 spds.), 1/2–28 threads per inch, .363–.006 feeds, 2-1/4" spdl. hole, turret tool post, 22-1/2" sw. over cross slide, Allen Bradley electrical, #5 MT in tailstock, D1-11 spdl. nose, 35-1/2" 4-jaw chuck, 56" sw. x 84" centers, made in USA, S/N 25558. **(SEE VIDEO)**.

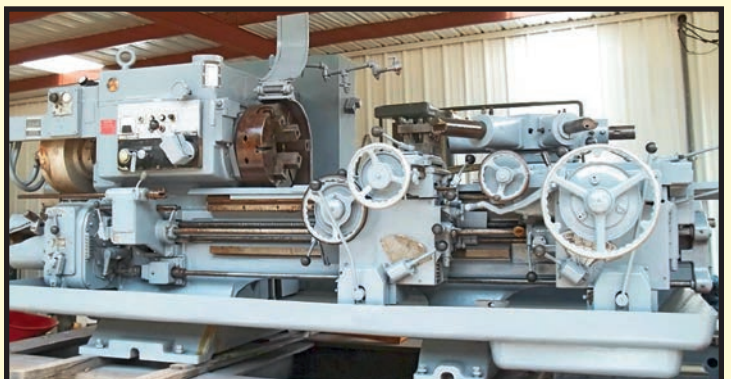
**DEAN SMITH & GRACE 31"/48" X 216" CAP. MDL. 90 GAP BED HOLLOW SPDL.**, 48" sw. in gap, 24" over cross slide, 5-1/2" spdl. bore, 9.9–180 RPM, 30" 4-jaw chuck, gap has 15" space, (2) steadyrests, 5 MT tailstock spdl., change gears, 20 HP motor, S/N 19917.

**ENTERPRISE 20"/28.5" X 90" MDL. EP 1810 GAP BED**, 18" sw. (20" actual) x 90" max. btwn. centers, 28-1/2" sw. in gap and 10.5" sw. over cross slide, 28–1,400 RPM, 10 HP motor, 3-phase 220/440 pwr., D1-8 Camlock spdl., steadyrest, #5 MT in tailstock, thread dial, imperial/metric threading, 3-1/8" spdl. hole, square turret tool post, chuck shield, splash guard, 15" 3-jaw chuck w/reversible top jaws and 3.9" hole inside it, dovetailed cross slide for accessories or special tool attachment, coolant tank, hardened bedways, chip pan, 2 to 72 threads per inch, S/N 20013. **(SEE VIDEO)**.

**CERUTI 21"/30" X 60" MDL. L-25 GAP BED**, 21" x 60" w/gap out sw. 30" range, 12.5" sw. over cross slide, 220/440 v., 3-phase pwr., 7.5 HP motor, 11.2–560 RPM, 2-3/4" spdl. hole, thread dial, lubrication pump window to see flow of oil, carriage stop, #5 MT in tailstock, turret tool post, 15" combination chuck (scrolls like a 3-jaw, independently adjustable jaws like 4-jaw), inch or metric threading, turning Diametral pitch, module, multiplied pitches, steadyrest w/max. approx. 6" opening, 12mm lead screw, taper attachment, 5/8" T-slots on carriage, can thread very coarse to 1 thread per inch or even .5 thread per inch if set-up right, U.S. Government Surplus, none of the tooling and measurement gear on it goes w/it, made in Italy, S/N 10821.



**ENTERPRISE 20"/28.5" X 90" MDL. EP 1810 GAP BED ENGINE LATHE**



**WARNER SWASEY MDL. 2A TURRET LATHE W/THREADING**

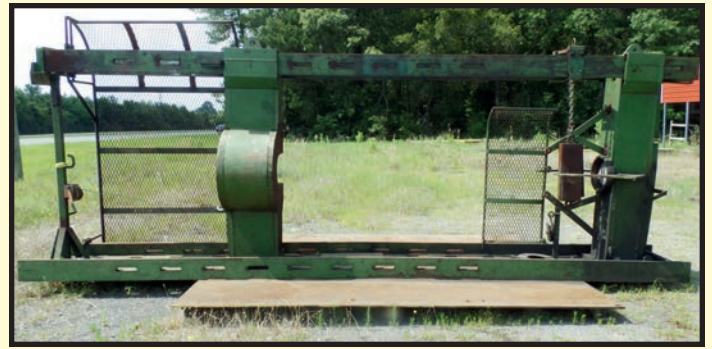
**WEDNESDAY, JUNE 28**  
**10:00 A.M. • LIVE ONLINE WEBCAST ONLY**  
**(NO ONSITE BIDDING)**



**INDUMA VERTICAL MILLING MACHINE**



**TURMOIL MDL. A JPG FLUID CHILLER**



**CUSTOM BUILT 400 T. CAP. (EST) WHEEL PRESS**

**LOCATION 7, CONT.**



**FOSDICK COLUMN TYPE DRILL PRESS**



**SOUTH BEND JOHNSON 27 T. CAP. MDL. 27-EW-A.C OBI PRESS**



**ALLEN COLUMN TYPE DRILL PRESS**



**FOSDICK 17" COLUMN X 7" RADIAL ARM DRILL**



**(2) VERTICAL-UP MDL. VUPNA3 THICK PLATE WELDING SYSTEMS**

**TURRET LATHE**

**WARNER SWASEY MDL. 2A LOT #621 M-3470 w/THREADING**, new 1974, Cushman air pwr'd. chuck, coolant, spd'l. inching, 18" dia. chuck, taper attachments, rapid traverse, cross sliding turret, 1,180 RPM max., threading, 4.5" actual bore size, 40 HP motor, S/N 2611959.

**VERTICAL MILLING MACHINE**

**INDUMA**, 9 x 42 tbl. size, 1.5 HP motor, oiler, 80-2,713 RPM, R8 spd'l., 5" quill travel, .0016, .003, .005 feed spd's., vee step pulley drive, 5/8" T-slots, cross feed screw approx. 3/8 turn play, long feed screw approx. 1/4 turn play, S/N 4571.

**RADIAL ARM DRILL**

**FOSDICK 17" COLUMN X 7" ARM**, 15 HP motor, 6 MT quill, H.D. quill up to 5-3/4" dia., 21.5" quill travel, coolant pump, 14-1,010 RPM range, rapid traverse, S/N 12113W. **(SEE VIDEO)**.

**FLUID CHILLER**

**TURMOIL MDL. A JPG**, circulates and cools, single. phase, model rated cooling cap., comp. standard pump cap. tank cap. standard voltage.

**WHEEL PRESS**

**CUSTOM BUILT WHEEL PRESS**, 400 T.(estimated) cap., (4) strain bars 1.5" thick x 8" wide, 68" to 73" btwn. strain bars, mounted on a 102 x 12' long base for stability and to keep it upright, sliding guards, peg positioning slots along length of bed/strain bars on 16" centers, approx. 14'-16" max. spread btwn. platen and press ram, 20 HP motor on pwr. unit, selling in (3) parts: frame, cylinder, and pwr. unit.

**OBI PRESS**

**SOUTH BEND JOHNSON 27 T. CAP. MDL. 27-EW-A.C.**, 230 v., 3-phase, motor can swap to 460 v., 5 HP motor, air clutch, 1.5" stroke, 10-3/8" shut ht., 21.5 L-R x 13 F-B bed size, 2-1/2" adj., 9 x 7-1/2" ram area, 150-lb. max. attachment weight, 300 SPM, Reeves spd. drive, palm buttons, S/N 74098.

**COLUMN TYPE DRILL PRESSES**

**ALLEN COLUMN TYPE DRILL PRESS**, 220 v., 3-phase motor (can be swapped to 440/460 v.), 2 HP motor, gutters around bench top perimeter for coolant or oil drainage, 15" throat depth down by the tbl., 5" quill travel, 60-2,400 RPM, Jacobs #6 chuck, 1/2" cap., #2 MT in quill, 25 x 33-3/4" machined surface work area, counterweight return on quill, approx. 12" down travel on column.

**FOSDICK DRILL PRESS**, 110-1,800 RPM, 11" head travel on a dovetail w/locking lever, 6" quill travel, #2 MT, square operating handle included, 1.5 HP, 230 v., 3-phase pwr., coolant capable w/basin and gutters on tbl., 24" x 36" tbl., 12" throat depth, 1/8-5/8" Jacobs drill chuck, 16" tbl. ht. adjustment, 29" max. material ht., on-board disconnect, foot pedal operation, new gasket in gearbox and oil changed, forward/reverse switch, made in USA, S/N 18942. **(SEE VIDEO)**.

**THICK PLATE WELDING SYSTEMS**

**(2) VERTICAL-UP MDL. VUPNA3 WELDING SYSTEMS**, new 2007, (1) can and (1) will, Koike Aronson type welding outfits w/Lincoln 1,000 amp pwr. sources, was used for welding 2" thick plate when in use, S/N 42802, S/N 42803.

**2007**

**DON'T MISS THIS SALE!**

# LOCATION 7, CONTINUED

Assets Located at  
**PINPOINT MACHINE**

19995 HWY. 167,  
DRY PRONG, LOUISIANA 71423

INSPECTION: June 26 & 27 by Appointment Only.  
Contact Richard Rogers at (318) 290-3296 for Appointment.



ADJUSTABLE PRESSBRAKE DIES



NEW PENNECON ENERGY MDL. 06-HSL-NF-033 HYDRAULIC SYSTEMS



PIQUA SERIES 40 CARDBOARD BALER

FOR BIDDING AT THIS AUCTION. Go to [www.pmi-auction.com](http://www.pmi-auction.com) and click on **BidSpotter** or **proxibid**, on our calendar page for this auction sale.



PANDJIRIS 6,000-LB. CAP. HEADSTOCK/ TAILSTOCK WELDING POSITIONER



YOUNG GRAPPLE



PACIFIC 1/2" X 12' MDL. 500R12 SHEAR

## HYDRAULIC PLATE SHEAR

PACIFIC 1/2" X 12' MDL. 500R12, 40 HP motor, 220 v./440 v., 3-phase, hyd. work-piece hold-downs, backgauge, squaring arm, foot pedal, roller top infeed tbl., S/N S10506.

## LEAF BRAKE

CHICAGO LEAF BRAKE, 8' x 16 ga.

## ADJUSTABLE PRESSBRAKE DIES

PROTOTYPE, 15' working length, 4-1/2" depth of tool to bottom, 10" max. width.

PROTOTYPE, 8' working length, 2-1/4" depth of tool to bottom, 5" max. width.

PROTOTYPE, 3' working length, 4-1/2" depth of tool to bottom, 10" max. width.

## WELDING POSITIONERS

ARONSON HEADSTOCK/TAILOSTOCK W/STEADYREST 3 PC. SYSTEM, 12" hollow spdl. in main driven headstock, 40,000-lb. in max. rotatable torque, rated 37,000-lbs. @ 6" to 11,000-lbs. @ 60", 54" sq. face w/1-1/4" T-slots, S/N 7465 9.

PANDJIRIS MDL. HS30 AND TS30 WELDING POSITIONING SYSTEM, 6,000-lb. cap., 120 v., 3-phase, 3 HP motor, tailstock face plate 19" dia. w/(4) each 11/16 T-slots 6" long plus opening for bolt head, (2) 15/16" shaft sizes and bearings are good, 60" center ht. from floor, remote control pendant w/approx. 30' of operating cord, variable forward and reverse spds. up to 1 RPM, S/N 10281E00. (SEE VIDEO).

## NEW HYDRAULIC MATCHING CYLINDER SET

PENNECON ENERGY MDL. 06-HSL-NF-033 HYDRAULIC SYSTEMS, approx. 54" travel, approx. 8" bore, 3,000 PSI operating pressure, 3,000 PSI design pressure, rod and barrel end eyes are 10"W. for 3-1/2" pins equipped w/bronze bushings, pin center-to-center dist. approx. 79" w/cylinder retracted.

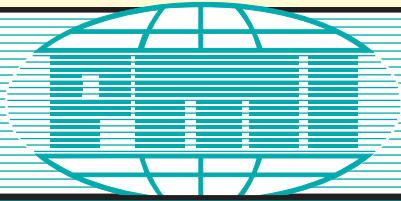
## FLANGE PUNCH

WHITNEY 150 T. CAP., 12.5" throat, on stand.



CHICAGO LEAF BRAKE





# AUCTION

## LOCATION 7, CONTINUED

**INSPECTION:** June 26 & 27 by Appointment Only.  
Contact Richard Rogers at (318) 290-3296  
for Appointment.

**WEDNESDAY,  
JUNE 28  
10:00 A.M.  
LIVE ONLINE WEBCAST ONLY  
(NO ONSITE BIDDING)**



**TOYOTA 7,000-LB. BASE CAP. LPG FORKLIFT**

### FORKLIFTS

**TOYOTA 5,500-LB. BASE CAP. MDL. 2FG25**, LPG, (tank NOT included), auto. transmission, Toyota 5R 4-cylinder engine, 64" free lift ht., 10'6" total lift ht., 4" forks, electronic ignition, good tires, brakes work, 6,117 hours, 5,096 H.O.M., new engine, S/N 42-62343. **(SEE VIDEO)**.

**TOYOTA 5,500-LB. BASE CAP. MDL. 02-5FD20**, diesel, SS, auto. transmission, pwr. brakes, 13'6" lift ht., 50" free lift, solid tires, newly repacked mast cylinders, 3,153 H.O.M., tilt steering, painted 2019, good seat, S/N 13588. **(SEE VIDEO)**.

**TOYOTA 4,000-LB. BASE CAP. MDL. 42-6FGCU25**, LPG, (tank NOT included), 21,374 H.O.M., solid tires, 80" lift ht. w/trucker mast, 3' forks, cleaned and painted last year, S/N 60793. **(SEE VIDEO)**.

**MITSUBISHI 4,000-LB. BASE CAP. MDL. FGC20**, LPG, (tank NOT included) 80" lift ht., 2-stage mast, cushion tires, S/N F82-01373. **(SEE VIDEO)**.

### GRAPPLE FOR KNUCKLE BOOM LOADER

**YOUNG**, 60" tip to tip jaws at max. opening, approx. 6" OD of cylinders.

### FORK ATTACHMENT

**FRONT END LOADER FORK ATTACHMENT**, back is "blank" and ready to be fitted w/mounts by qualified builder/engineer, 70" wide frame, 2-1/2" thick x 8 wide x 58-1/2" long forks, forks are "pin type" w/2-1/2" dia. pins, 5-pos. forks, forks can be as close as 8" together, used w/20,000-lb. cap. forklift.

### PNEUMATIC AIR TRACTOR PAINT BOOTH TROLLEY SYSTEM

**SATURN AIR TRACTOR**, 90–100 PSI air pressure, spds.: 0–35 FPM. (Beams not included).

### CARDBOARD BALERS

**PIQUA SERIES 40**, 7.5 HP motor, 3-phase, 220/240 v. or 440/480 v., Vickers hydraulics, Allen Bradley electrical components, 6" bore cylinder, reworked 18 months before removal, auto. cycle, E-stop, spin on hydraulic filter, makes bales 40 x 54 and from 30–48" high, made in the USA, S/N 811437. **(SEE VIDEO)**.

**PHILADELPHIA TRAMRAIL MDL. 2300 LEFT HAND**, bales 60" x 30" x 48", manual up and down, 6" cylinder, 10 HP motor, 230 v or 460 v, 3-phase, S/N 91N-6859. **(SEE VIDEO)**.

**FOR BIDDING AT THIS AUCTION.** Go to [www.pmi-auction.com](http://www.pmi-auction.com) and click on **BidSpotter** or **proxibid** on our calendar page for this auction sale.

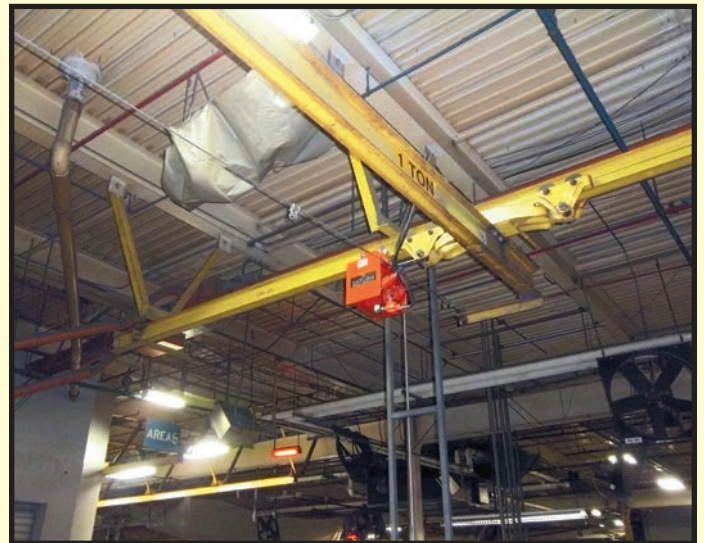
**DON'T MISS  
THIS SALE!**



**PHILADELPHIA TRAMRAIL MDL. 2300  
LEFT HAND CARDBOARD BALER**



**TOYOTA 5,500-LB. BASE CAP. DIESEL FORKLIFT**



**SATURN PNEUMATIC AIR TRACTOR PAINT BOOTH TROLLEY SYSTEM**



CATERPILLAR 13,000-LB. BASE CAP. DIESEL FORKLIFT



HYSTER 15,500-LB. BASE CAP. DIESEL FORKLIFT



PRINCETON 5,000-LB. BASE CAP. DIESEL FORKLIFT

**LOCATION 8**  
**DALLAS AREA STORAGE FACILITY**  
 2120 NORTH LOOP 12, IRVING, TEXAS 75061

**INSPECTION:**  
 Monday & Tuesday,  
 June 26 & 27,  
 9:00 A.M. to 4:00 P.M. Each Day.

**DON'T MISS THIS SALE!**



CATERPILLAR 7,000-LB. BASE CAP. DIESEL FORKLIFT



TOYOTA 6,500-LB. BASE CAP. LPG FORKLIFT



CLARK 11,000-LB. BASE CAP. LPG FORKLIFT

**DIESEL FORKLIFTS**

**HYSTER 15,500-LB. BASE CAP. MDL. H155XL**, diesel, 98" 3-stage mast, 180" lift ht., side shift, pneumatic tires, 72" forks, S/N F006D01929R.

**HYSTER 15,500-LB. BASE CAP. MDL. S155XL**, diesel, 106" 2-stage mast, 134" lift ht., cushion tires, 60" forks, S/N B024D02192M.

**CATERPILLAR 13,000-LB. BASE CAP. MDL. V130**, diesel, 134" 2-stage mast, 180" lift ht., side shift, pneumatic tires, 96" forks, S/N 8EF00256.

**TCM 8,000-LB. BASE CAP. MDL. FHD36Z2**, diesel, 90" 2-stage mast, 147" lift ht., side shift, pneumatic tires, 48" forks, S/N A34N00398.

**CATERPILLAR 7,000-LB. BASE CAP. MDL. 2PD70004**, new 2014, diesel, 84" 3-stage mast, 186" lift ht., side shift, fork positioner, pneumatic tires, 48" forks, S/N A14E90029.

**(3) TOYOTA 6,000-LB. BASE CAP. MDL. 8FDN30**, diesel, 80" 2-stage mast, 120" lift ht., side shift, pneumatic tires, 42" forks, S/N 10330, S/N 10170, S/N 10090.

**PRINCETON 5,000-LB. BASE CAP. MDL. PBX**, diesel, 98" 2-stage mast, 120" lift ht., side shift, pneumatic tires, 42" forks, S/N 126273906.

**LPG FORKLIFTS**

**HYSTER 15,500-LB. BASE CAP. MDL. S155XL2**, LPG, 127" 2-stage mast, 173" lift ht., side shift, cushion tires, 60" forks, S/N C024V02058C.

**CLARK 11,000-LB. BASE CAP. MDL. GPX50**, LPG, 89" 3-stage mast, 186" lift ht., side shift, dual pneumatic tires, 48" forks, S/N GPX711-0012-GEF9330.

**TOYOTA 10,000-LB. BASE CAP. MDL. 8FG45U**, new 2013, LPG, 89" 3-stage mast, 187" lift ht., side shift, pneumatic tires, 4,747 H.O.M., 48" forks, S/N 10048.

**TOYOTA 6,500-LB. BASE CAP. MDL. 8FGCU32**, LPG, 89" 3-stage mast, 188" lift ht., single double attachment, cushion tires, 42" forks, S/N 15913.

**(2) TOYOTA 5,000-LB. BASE CAP. MDL. 7FGCU25**, LPG, 2-stage trucker mast, 80" lift ht., cushion tires, 42" forks, S/N 91430, S/N 84914.



(1 OF 3) TOYOTA 6,000-LB. BASE CAP. DIESEL FORKLIFT



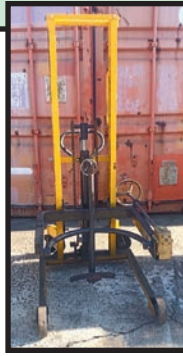
TOYOTA 10,000-LB. BASE CAP. LPG FORKLIFT



**MR DEBURR  
VIBRATORY  
DEBURRING  
MACHINE**



**VACUUM  
PACKING  
MACHINE**



**55 GAL. HAND  
DRUM LIFT**



**COLLAPSIBLE  
METAL  
BASKETS**



**BIRMINGHAM WSG-618 RECIPROCATING  
SURFACE GRINDER**

**LOCATION 9**  
**METAL SAWING TECHNOLOGIES**  
**9502 E. HARDY, HOUSTON, TEXAS 77093**  
INSPECTION: By Appointment Only. Contact Ken Oyer at (713) 697-1605 for Appointment.

**RECIPROCATING SURFACE GRINDER**  
BIRMINGHAM WSG-618, manual operation.  
**SHOP SUPPORT EQUIPMENT**  
MR DEBURR vibratory deburring machine; (2) KURT DOUBLE VICES; VACUUM PACKING MACHINE; 55 GAL. HAND DRUM LIFT; LOT OF COLLAPSIBLE METAL BASKETS.

**LOCATION 10**  
Surplus to the Ongoing Operations of  
**AREA MANUFACTURING COMPANIES**  
Stored at the Following Location  
**SNS INDUSTRIAL MACHINERY MOVERS INC.**  
**13991 HENRY HARRIS ROAD, CONROE, TEXAS 77306-6719**  
INSPECTION: Monday & Tuesday June 26 & 27, 9:00 A.M. to 4:00 P.M.



**KAWASAKI MULE**



**HYSTER 5,000-LB. BASE CAP. FORKLIFT**



**A-FRAME GALVANIZED MATERIAL  
STORAGE RACK**



**FORKLIFT BOOM EXTENSION**



**TAYLOR DUNN UTILITY CART**



**FORKLIFT SEAT**

**UTILITY VEHICLES**  
KAWASAKI MULE, age unknown.  
TAYLOR DUNN UTILITY CART MDL. B2-48, 36 v., 3,000-lb. cap., 4-seater, flatbed, built in charger, S/N 132708.  
**TRAILERS**  
UTILITY TRAILER, 16'.  
GALVANIZED UTILITY TRAILER, 5' x 6'.  
**FORKLIFTS & ACCESSORIES**  
HYSTER 5,000-LB. BASE CAP. MDL. S50XM, LPG, side shift, solid tires, 189" lift ht., truck weight 8,958-lb., S/N D187V03790T (brakes locked up), (LP bottle not included).  
MITSUBISHI CATERPILLAR 4,000-LB. BASE CAP. MDL. FGC20K, S/N AF82C-03515 (out of service).  
ALSO: (1) FORKLIFT SEAT; (1) FORKLIFT BOOM EXTENSION.  
**SHOP SUPPORT EQUIPMENT**  
(2) A-FRAME GALVANIZED MATERIAL STORAGE RACKS, approx. 3' x 4' x 6' ht., w/barstock; RIDGID TABLE SAW; DEWALT CHOP SAW; TORQUE WRENCHES; BOTTLE JACKS; OXY HOSE SET; FIBERGLASS LADDERS; MORE.

**FOR BIDDING AT THIS AUCTION.**  
Go to [www.pmi-auction.com](http://www.pmi-auction.com) and click on **BidSpotter** or **proxibid** on our calendar page for this auction sale.



# AUCTION

**10 LOCATIONS: TEXAS, LOUISIANA, ILLINOIS, NEW JERSEY, W. VIRGINIA**

**Featuring: Beam Drill/Saw Line; CNC & Manual Machine Tools & Fabricating Equip.; Horiz. & Vert. Bandsaws; Welding Power Sources & Feeders; Conex Boxes; (150) NEW Industrial Fans; Support; (20+) Forklifts; MORE!**

**WEDNESDAY, JUNE 28 • 10:00 A.M.**  
**LIVE ONLINE WEBCAST ONLY (NO ONSITE BIDDING)**

FOR BIDDING AT THIS AUCTION. Go to [www.pmi-auction.com](http://www.pmi-auction.com) and click on **BidSpotter** or **proxibid** on our calendar page for this auction sale.

**INSPECTION:** Varies By Location.  
See Inside for Details.

## ONLINE REGISTRATION

Register to bid at

**BidSpotter** or **proxibid**

1. Use the [link to Bidspotter.com](http://link to Bidspotter.com) or [Proxibid.com](http://Proxibid.com) on PMI's website calendar. [www.pmi-auction.com](http://www.pmi-auction.com) **DO IT NOW!**
2. This auction may require a Cash, or credit card, or debit card, 100% refundable deposit. If by credit or debit card, it can be added through the Bidspotter.com fully secure and PCI compliant registration process and will be assessed a 100% refundable \$3,000 (US Bidder) or a \$10,000 (Foreign Bidder) deposit in order to be approved to bid online with this auction. Cash deposits can be made by wire transfer. **DON'T WAIT.** If you are unsuccessful in the auction, the refund of your credit/debit card deposit will occur shortly after the auction ends. Cash deposits will be expedited as well.

If you need assistance, don't hesitate to call (713) 691-4401.

**ALL BIDS ARE SUBJECT TO AN 18% BUYER'S PREMIUM.**

## PARTIAL TERMS & CONDITIONS:

An 18% Buyer's Premium Will Apply.

Everything will be sold to the highest bidder or bidders for cash in accordance with the auctioneer's Customary Terms of Sale, copies of which will be posted on our website.

**ALL PAYMENTS MUST BE MADE BY CASHIER'S CHECK, WIRE TRANSFER OR COMPANY CHECK WITH BANK LETTER GUARANTEEING PAYMENT TO PLANT & MACHINERY INC.**

Here is an example of what your letter should be: Mr. "Customer Name" is a customer of this bank. This bank will guarantee unqualified payment to PMI on the account listed herein up to the amount of \$ \_\_\_\_\_. This letter is good until July 28, 2023.

In default of payment of bills in full within the time therein specified, the Auctioneer in addition to all other remedies allowed by law, may retain all monies received as deposit or otherwise, as liquidated damages. All items must be removed by the time announced at the start of the sale.

Lots not paid for and/or removed within the time allowed may be resold at public or private sale without further notice, and any deficiency, together with all expenses and charge of resale, will be charged to the defaulting purchaser.

The buyer acknowledges that he or an agent has inspected all of the assets upon which he will be bidding and/or does purchase.

Buyer agrees to accept assets purchased "AS IS," WITH "ALL FAULTS" AND "WITH REMOVAL AT BUYER'S RISK AND EXPENSE." THE AUCTIONEER EXPRESSLY DISCLAIMS ON THE PART OF THE

AUCTIONEER AS AGENT AND THE SELLER, ANY WARRANTY AS TO FITNESS OR USABILITY OF ALL THE ASSETS, AND THE BUYER EXPRESSLY WAIVES ANY CLAIM IN RESPECT TO ANY POSSIBLE FUTURE USE OF ANY ASSET PURCHASED FOR ANY PURPOSE WHATSOEVER.

The buyer does hereby assume and does agree to indemnify and hold the auctioneer harmless from any future claim which shall pertain to the fitness or use of that asset as being purchased. Riggers, movers, electricians and buyers performing work at the Auction Site must provide PMI with evidence of insurance. The insurance coverage must be at a level acceptable to PMI and to the seller. PMI reserves the right to withdraw items, alter the order of the sale, accept bids from the seller, and group lots as it may deem appropriate. This auction may include consignment items.

Although all information has been obtained from sources deemed reliable, the auctioneer and seller make no warranty or guarantee, expressed or implied, as to the accuracy of the information herein contained, or contained in our catalog. It is for this reason that buyers should avail themselves of the opportunity to make inspection prior to the auction. Although it is not likely, auction sales are subject to cancellation or postponement. Kindly contact auctioneer prior to attendance.

These terms and conditions may be modified or supplemented by language in the catalog available at the sale site or by announcement at the start of the sale. Bidders should be attentive to those announcements and to the catalog language.

Sale Conducted By:

## PLANT & MACHINERY INC.

AUCTIONEERS • APPRAISERS • LIQUIDATORS • REAL ESTATE

Ron Moore, TX Lic. #7314, LA Lic. #851 • PMI LA Lic. #AB-396

**HOUSTON • DALLAS • ST. LOUIS**

**Headquarters:**

**1304 Langham Creek Drive, Suite 454  
Houston, Texas 77084**

**PHONE: (713) 691-4401**

**FAX: (713) 672-7905**

**E-MAIL: [pmi@pmi-auction.com](mailto:pmi@pmi-auction.com)**

**WEBSITE: [www.pmi-auction.com](http://www.pmi-auction.com)**