



# ONLINE TIMED AUCTION

## LOCATIONS IN TEXAS, MICHIGAN & LOUISIANA



HTC  
HYDRAULIC  
155 T. CAP.  
PRESSBRAKE



LVD CNC  
PRESSBRAKE



TOYOTA 7,000-LB. CAP. FORKLIFT

**BIDS START CLOSING ON  
TUESDAY, AUGUST 24  
AT 10:00 A.M.**

**ONLINE BIDDING: YOU MUST REGISTER IN  
ADVANCE FOR ONLINE BIDDING AT THIS  
AUCTION. Go to [www.pmi-auction.com](http://www.pmi-auction.com) and click  
on [BidSpotter.com](http://BidSpotter.com)  
on our calendar page for this auction sale.**



AMADA ASTRO100 ROBOTIC BENDING CELL

**BUYER'S PREMIUM: 18%**

**INSPECTION:** By Appointment – See Each Location



PRINCETON 5,000-LB. CAP. MDL.  
PB50 DIESEL PIGGYBACK FORKLIFT



PLASMA SYSTEMS INC. CNC PLASMA  
AND OXY CUTTING SYSTEM



TOSHIBA MDL. BTD-110.R16 TABLE TYPE  
HORIZONTAL BORING MILL

*Read Partial Terms and Conditions on Back Page of Brochure*

Sale Conducted By:

### PLANT & MACHINERY INC.

AUCTIONEERS • APPRAISERS • LIQUIDATORS • REAL ESTATE

Ron Moore, Texas Lic. #7314

Ron G. Moore, LA Lic. # 851 • PMI LA Lic. #AB-396

HOUSTON • DALLAS • ST. LOUIS

Headquarters:

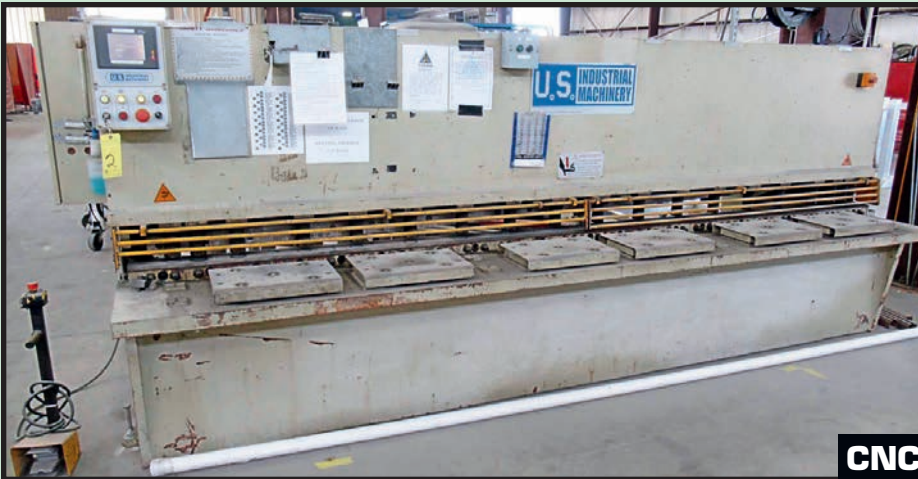
1304 Langham Creek Drive, Suite 454  
Houston, Texas 77084

PHONE: (713) 691-4401

FAX: (713) 672-7905

E-MAIL: [pmi@pmi-auction.com](mailto:pmi@pmi-auction.com)

WEBSITE: [www.pmi-auction.com](http://www.pmi-auction.com)



U.S. INDUSTRIAL MACHINERY 1/4" X 12' HYDRAULIC SHEAR

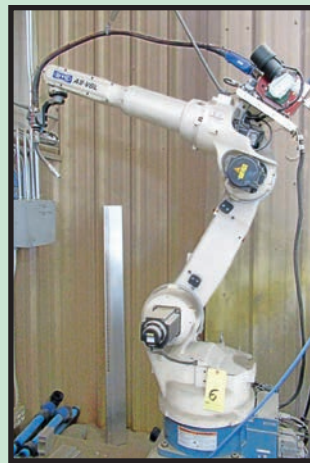
**CNC**

**LOCATION 1**  
**FLEXDECKS, INC.**  
 14325 W. Hardy Road,  
 Houston, Texas 77060  
**INSPECTION:** By Appointment Only.  
 Contact Andy Townend, (713) 202-8555  
 to schedule an appointment.



LVD MDL. 150BH13MNC85N PRESSBRAKE

**CNC**



DAIHEN OTC ROBOTIC WELDING SYSTEM

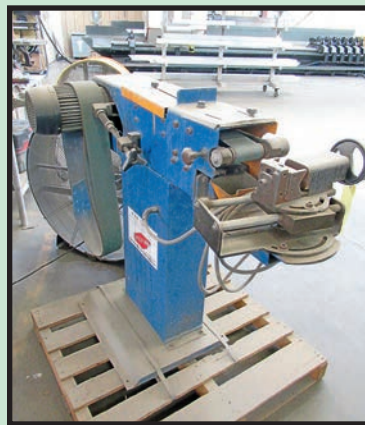
**PRESSBRAKE**  
 LVD MDL. 150BH13MNC85N, new 1990, 135/40 max. cap., PC controls, CNC backgauge control, 2-way pressbrake dies, misc. tooling, S/N 8038.  
**HYDRAULIC SHEAR**  
 U.S. INDUSTRIAL MACHINERY 1/4" X 12' MDL. US1225CNCPS, U.S. Industrial control, squaring arm, expandable accordion style after sort gravity fed roller conveyor, S/N J2005-153.

**ROBOTIC WELDING SYSTEM**  
 DAIHEN OTC MDL. AII-V6L, new 2009, mtd. on Mdl. NV6L robot manipulator, OTCAX Mdl. AX21-UL0000 robot control, S/N L21411Y25-983001, OTC MDL. DL350 digital inverter, S/N P10544YDZ148391002, 350 pwr. source, Control Magnetics 18 KVA transformer, S/N 1L10535YZ5981301.

**TUBE BENDER**  
 ERCOLINA MDL. TB60, new 2004, 1.5 kW pwr. source, microprocessor control, foot pedal operation, misc. tooling, S/N 6040074.



ERCOLINA MDL CE50H3 ANGLE ROLL



ERCOLINA MDL. EN100 TUBE SANDER



ERCOLINA MDL. TB60 TUBE BENDER

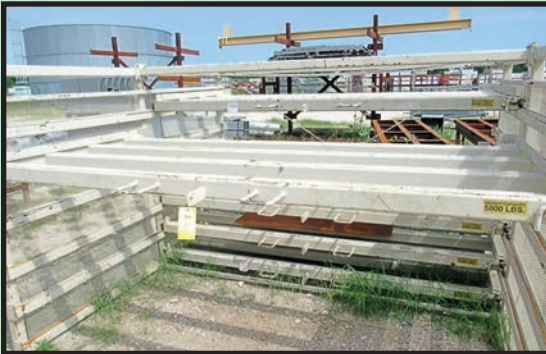
**ANGLE ROLL**  
 ERCOLINA MDL. CE50H3, new 2002, Mdl. RC100 ring roller control, 240 v., misc. dies, S/N 1020014.  
**TUBE SANDER**  
 ERCOLINA MDL. EN100, new 2006, 240 v., 4 kW pwr. supply, 4" sanding width, swiveling vise attach., S/N 1006058.  
**TAPPING MACHINE**  
 FLEX ARM MDL. GH45, Mdl. 500MM hyd. motor, misc. mounting hardware, S/N 2731.



**KOPINGS 20" X 40" MDL. S10B ENGINE LATHE**



**SPRAY PAINT WALL EXHAUST SYSTEMS**



**PLATE AND SHEETMETAL STORAGE AND HANDLING SYSTEM**



**TENNANT WALK-BEHIND TYPE FLOOR SWEEPER**

**DON'T MISS THIS SALE!**



**UNIVERSAL BALANCE WELDING POSITIONERS**



**BRIDGEPORT SERIES II SPECIAL MILL**

**LOCATION 1 CONTINUED**



**2005 GMC MDL. 3500 FLATBED TRUCK**

**MILL**

**BRIDGEPORT SERIES II SPECIAL**, 11" x 58" tbl., 2 HP variable spd. head, 6" swivel base vise, set-up tooling, Newall C80 2-axis D.R.O., pwr. feed, right angle attach., misc. collets and milling head toolholders, custom collet set stand, S/N 3293S.

**ENGINE LATHE**

**KOPINGS 20" X 40" MDL. S10B**, 2-3/4" spd. bore, taper attach., 15" dia. 3-jaw chuck, thread dia., Aloris toolpost w/misc. toolholders, S/N 58292.

**FLATBED TRUCK**

**2005 GMC MDL. 3500**, Duramax diesel engine, 9'L. diamond plate bed, dual rear tires, headache rack, Texas License No. CDM0577, VIN 1GTJC33275F964433.

**CEILING EXHAUST PAINT BOOTHS**

**(3) 14"W. X 3-1/2"D. X 7'H.**, extraction blowers, dust collection motors, ducting each unit w/motor induction extraction system, add'l. baffles.

**PLATE & SHEETMETAL STORAGE & HANDLING SYSTEM**

**6-LEVELS**, 5,000-lb. cap. per level, each level on rollers, approx. 10'W. x 5'D. per rack w/add'l. 5' for extension.

**BALANCE WELDING POSITIONERS**

**(3) UNIVERSAL 1,000-LB. CAP. MDL. C1000**, S/N 752366, S/N N.A., S/N 964295.

**FLOOR SWEEPER**

**TENNANT MDL. 5700 WALK-BEHIND TYPE**, battery operated, battery charger.

**RECIPROCATING TYPE AIR COMPRESSOR.**

**HUSKY PRO**, single stage, 7-1/2 HP motor, 80 gal. cap., 175 max. PSI.

**COMBINATION BELT & DISC GRINDER**

**DELTA ROCKWELL 6"**.

**ABRASIVE REMOVAL SYSTEM**

**FLOW SYSTEMS**, gravity fed, hoses, PVC hardware.

**WATER CHILLER**

**MASTER CHILLER MDL. GCGD24S41S3A** (for water jet), Branco electronic temp. control, air cond. unit.

**WATER JET AGGREGATE WATER COLLECTION & FILTRATION SYSTEM**

**CUSTOM**, 48 x 48 x 48D.

**MISCELLANEOUS SHOP & WAREHOUSE EQUIPMENT**

**CRAFTSMAN TOOLBOX**, 3-drawer, w/Jacobs chuck, collet set, endmill cutter, inserts, etc.; **(7) METAL SHELVES** on (2) pallets (6) 168" L. X 40"W.; **H.D. WELDING AND SET-UP TBLs.**, I-beam construction; **(2) 48" X 96" H.D. WELDING AND SET-UP TABLES**, approx. 1/2" top plate, steel construction; **(6) ROLLER CONVEYORS**, w/(3) custom roller tbls., (1) approx. 8'W. x approx. 14'L.; **H.D. WELDING AND SET-UP TABLE**, I-beam construction, (3) I-beams; **(4) 168" L. X 40"W. H.D. WELDING AND SET-UP TABLES**, I-beam construction; **8'W. X 4'D. TELESCOPING STEEL PLATE AND SHEET STORAGE RACK**, 4-levels – (3) levels are telescoping, extension attach.; **PORTABLE TRUSS SYSTEM** for trade-show set-up, concerts, etc.

**WALL MOUNTED JIB CRANE**

**DAVIT APPROX. 15'L.**, wire feeder.

## HYDRAULIC PRESSBRAKE

HTC 155 T. CAP., 12' bed.

## SHEAR

BETENBENDER 8' X 10 GA. MDL. 8-10GA, 36" backgauge, backgauge control, S/N 204407.

## LOCATION 2

HMT, LLC

23832 Tomball Pkwy.,  
Tomball, Texas 77375

## INSPECTION:

By Appointment Only.  
Contact Clyde Hughes,  
(281) 743-1667 to schedule  
an appointment.



HTC 155 T. CAP. HYDRAULIC PRESSBRAKE



BETENBENDER 8' X 10 GA. SHEAR



ROUSSELLE 100 T. CAP. MDL. 10B48-8-C PRESS



ROUSSELLE 100 T. CAP. MDL. 10B-60-0 PRESS



KJMAC 10,000-LB. CAP. HYDRAULIC DECOILER



TOYOTA 7,000-LB. CAP. FORKLIFT

## PRESSES

ROUSSELLE 100 T. CAP. MDL. 10B48-8-C, 55 SPM, 2" stroke length, 22" shut ht., SSC-1500 control, S/N P-8949-RF.

ROUSSELLE 100 T. CAP. MDL. 10B-60-0, 65 SPM, 2" stroke length, 18" shut ht., 4" slide adj., S/N P-8173RF.

## HYDRAULIC DECOILER

KJMAC 10,000-LB. CAP. MDL. MTC-1600, new 2010, 1,600mm material width, 2mm material thickness, 10,000 KG material weight, 508mm coil I.D., 1,800mm coil O.D., 20 meters per minute spd., 480 v., S/N 024780.

## FORKLIFT

TOYOTA 7,000-LB. BASE CAP. MDL. 7FGU35, LP pwrd., 3-stage mast, 187" lift ht., side shift, solid tires, 2,553 H.O.M., S/N 72562.

## ONLINE BIDDING:

YOU MUST REGISTER IN ADVANCE FOR  
ONLINE BIDDING AT THIS AUCTION.  
Go to [www.pmi-auction.com](http://www.pmi-auction.com) and click on  
[BidSpotter.com](http://BidSpotter.com)  
on our calendar page for this auction sale.

## LOCATION 2 CONTINUED



FABRIC AND RUBBER GASKET PUNCH MACHINES

### FABRIC & RUBBER GASKET PUNCH MACHINES

**CONSISTING OF:** feed system, hyd. pwr. source, 7-1/2 HP motor, 18" throat depth, 6" stroke, 14 x 14 work area, 60" decoiler, Dayton DC variable spd. control, Alvin set-up tbl., Merkel Cutting Machines slitter, seam welder, Utien Pack pneu. sealing machine.

**UNCOILER,** hyd. pwr. source, 7-1/2 HP motor, 18" throat depth, 6" stroke, 14 x 14 work area, 60" decoiler, Dayton DC variable spd. control, Alvin set-up tbl., Merkel Cutting Machines slitter, seam welder, Utien Pack pneu. sealing machine.

### DRILL PRESS

**JET MDL. JDP-20EVS/230,** electronic variable spds.: 65–2,000 RPM in (2) ranges, S/N 11050712.

### TURRET PUNCH PRESS

**STRIPPIT MDL. SUPER 30,** S/N 567121365.

### DECOILER LEVELER

**A C TEC,** new 2011, 9'W. cap., S/N 020110908.

### CONCRETE FORM SCAFFOLDING SYSTEM

**DOKA.**

### DUST COLLECTION SYSTEM

**TORIT DONALDSON,** 9-cartridge, ducting, exhaust conduit, control box.

### ADJUSTABLE PALLET RACKS

(5) ASSORTED UPRIGHTS w/wire pallet screens.

### RECIPROCATING TYPE AIR COMPRESSOR

**SPEEDAIRE,** 5 HP motor, single stage, horiz. tank.

### AIR CONDITIONING UNIT

**TRANE ODYSSEY MDL. TTA090D400AA,** new 2014, 5 T. cap., S/N 141448NJYA.

**RUDD ACHIEVER MDL. RAWL-090DAZ,** new 2010, 5 T. cap., S/N 7754F181002282.

### MISCELLANEOUS SHOP & WAREHOUSE EQUIPMENT

PORTABLE WELDING BOXES AND (3) KNAACK TOOLBOXES w/OTC 450 welders; (12) DIAMOND PLATE DOUBLE BOXES w/OTC and Lincoln welders.



JET MDL. JDP-20EVS/230  
DRILL PRESS



(1 OF 3) KNAACK TOOLBOXES



SAMPLE VIEW OF DIAMOND PLATE TOOLBOXES



DOKA CONCRETE FORM SCAFFOLDING SYSTEM



**DON'T MISS  
THIS SALE!**

TRANE ODYSSEY  
AIR CONDITIONING UNIT



ADJUSTABLE  
PALLET RACKS

## LOCATIONS IN TEXAS, MICHIGAN & LOUISIANA

### LOCATION 3 HMT LLC

1301 Transport Drive, Baytown, Texas 77523

INSPECTION: By Appointment Only.

Contact Jay Jenkins, (281) 768-0947 to schedule an appointment.

#### VERTICAL TURRET LATHE

**BULLARD CUTMASTER 42"**, 42" dia. 3-jaw chuck, turret head, side head, built-in master jaws, S/N 26667.

#### TELESCOPING MANLIFT

**SIMON MDL. MPE-110**, LP gas pwrd., 500-lb. max. platform load, 110' reach, Ford Mdl. CSG-649P-6006-Y engine, S/N R117.

#### FORKLIFTS

**TAYLOR 30,000-LB. BASE CAP. MDL. TYH-300L**, diesel pwrd., fork positioners, side shift, dual pneu. front tires, 1,853 H.O.M., S/N S-RO-13299, S/N N.A.

#### TELESCOPING BOOM LIFT

**BRODERSON CARRY DECK 18,000-LB. CAP. MDL. IC-80-3f**, diesel pwrd., certified 2/2020, 11' x 30'L. boom lift w/10' extension, S/N 506174.



**BULLARD CUTMASTER 42" VERTICAL TURRET LATHE**



**TAYLOR 30,000-LB. CAP. FORKLIFT**

**2  
AVAILABLE**



**TAYLOR 30,000-LB. CAP. FORKLIFT**

**ONLINE BIDDING:  
YOU MUST REGISTER  
IN ADVANCE FOR  
ONLINE BIDDING  
AT THIS AUCTION.**

Go to  
[www.pmi-auction.com](http://www.pmi-auction.com)  
and click on  
[BidSpotter.com](http://BidSpotter.com)  
on our calendar page  
for this auction sale.



**SIMON MDL. MPE-110 TELESCOPING MANLIFT**



**BRODERSON CARRY DECK 18,000-LB. CAP.  
TELESCOPING BOOM LIFT**

**BIDS START  
CLOSING ON  
TUESDAY,  
AUGUST 24  
AT 10:00 A.M.**

**DON'T MISS  
THIS SALE!**

**LOCATION 4**  
**DUST FREE, LP**  
**1112 Industrial Drive, Royse City, Texas 75189**

**INSPECTION:** By Appointment Only.  
Contact Gregg Burnett, (972) 635-956  
to schedule an appointment.



(1 OF 2) AMADA ASTRO100 FBD-8025M ROBOTIC WELDING CELLS



AMADA ASTRO100 FBD-1253MH  
ROBOTIC WELDING CELL



(2 OF 2) AMADA ASTRO100  
FBD-8025M ROBOTIC  
WELDING CELLS

### ROBOTIC BENDING CELL

**AMADA ASTRO100 FBD-1253MH**, 138 T., 122" bending length, 106" distance btwn. frames, 5.9" max. stroke, 15.7" throat depth, AMNC RML 39BM control, ErnestX material handling robot, thickness indicator, part manipulator, (2) finger assemblies, 2000.

**AMADA ASTRO100 FBD-8025M**, 88 T., 98.6" bending length, 86.6" distance btwn. uprights, 5.9" max. stroke, 15.7" throat depth, AMNC RML 39BM control, ErnestX material handling robot, thickness indicator, part manipulator, (2) finger assemblies, S/N 80250712, 1999.

**AMADA ASTRO100 FBD-8025M**, 88 T., 98.6" bed length, 86.6" distance btwn. housings, 5.9" max. stroke, 15.7" throat depth, AMNC RML 39BM control, ErnestX ERX 1210 material handling robot, thickness indicator, part manipulator, (2) finger assemblies, 1999.



MATERIAL HANDLING ROBOT FOR  
ROBOTIC WELDING CELL

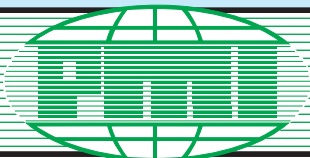


CNC CONTROL FOR ROBOTIC  
WELDING CELL



CPART MANIPULATOR FOR  
ROBOTIC WELDING CELL

**BIDS START  
CLOSING ON  
TUESDAY,  
AUGUST 24  
AT 10:00 A.M.**



# ONLINE TIMED AUCTION

## LOCATIONS IN TEXAS, MICHIGAN & LOUISIANA

**LOCATION 5**  
**FURNACE OVENS & BATHS**  
195 Campbell Street, River Rouge, Michigan 48218

**INSPECTION:**  
By Appointment Only.  
Contact Jeff Hynes, (248) 343-1421  
to schedule an appointment.

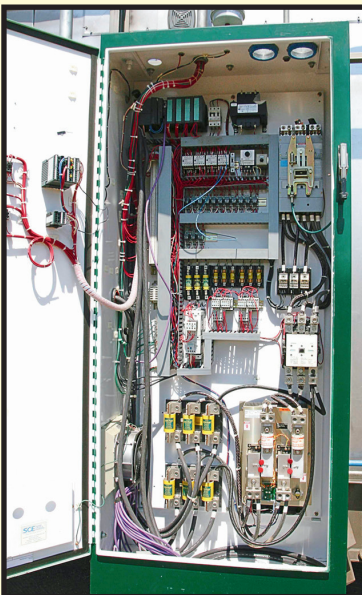
**DON'T MISS  
THIS SALE!**



FECO ELECTRIC BATCH OVEN



SAUDER INTERNAL QUENCH HEAT TREAT LINE



FECO ELECTRIC BATCH OVEN  
CONTROL

### **ELECTRIC BATCH OVEN**

**FECO ELECTRICALLY HEATED BATCH OVEN W/VERTICAL LIFT DOORS ON BOTH ENDS**, pwr. roller conveyor inside oven, pwr. required is 480 v., 350 kW, circulating fan is rated for 800°F, 4-1/2" of insulation (The oven manufacturer states that this oven is rated for 295°F. Oven has 4-1/2" insulation thickness and will operate at higher temperature. Excellent Condition, incl. loading onto buyer's truck.

### **INTERNAL QUENCH HEAT TREAT LINE**

**SAUDER (ABAR IPSEN) 24"W. X 24"H. X 36"L. LOAD SIZE**, 1,850°F, electrically heated. incl. IQ furnace w/top cool and quench, dunk and spray washer, temper furnace, SBS oil cooler and charge car. pwr. required is 480 v., 150 kW, incl. loading onto buyer's truck.



INTERNAL VIEW OF SAUDER INTERNAL  
QUENCH HEAT TREAT LINE

**BIDS START CLOSING  
ON TUESDAY, AUGUST 24  
AT 10:00 A.M.**

**ONLINE BIDDING: YOU MUST REGISTER IN ADVANCE  
FOR ONLINE BIDDING AT THIS AUCTION.**  
Go to [www.pmi-auction.com](http://www.pmi-auction.com) and click on  
[BidSpotter.com](http://BidSpotter.com) on our calendar page for this  
auction sale.

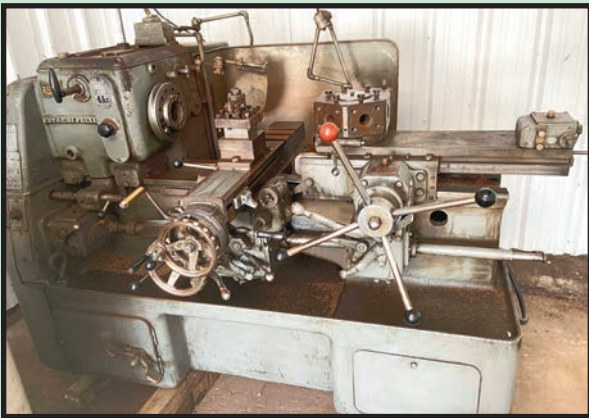


**LOCATION 6**  
**BATON ROUGE MACHINE WORKS, LLC**  
**12612 Ronaldson Road, Baton Rouge, Louisiana 70807**  
**INSPECTION:** By Appointment Only.  
 Contact Ron Bowen, (225) 270-1049 to schedule an appointment.

**CNC TABLE TYPE HORIZONTAL BORING MILL**  
**TOSHIBA MDL. BTD-110.R16**, new 10/1997, Tosnuc 888 CNC control, 4.3" spdl., 78.74" X, 59.0" Y and 57.06" Z-axis travels, 55.11" x 62.99" T-slotted tbl., 13,890-lb. tbl. load cap., 38-pos. ATC, S/N 143971 (\*Note: Seller will offer assistance to a qualified rigger of this machine).



**LOCATION 7**  
**ORIGINAL SEATS**  
**8135 Jackrabbit Road, Houston, Texas 77095**  
**INSPECTION:** By Appointment Only.  
 Contact Miguel, (832) 812-8268 to schedule an appointment.



HITACHI SEIKI 4A II TURRET LATHE



BRIDGEPORT SERIES 11 VERTICAL TURRET MILL

**FORKLIFT**  
**HYSTER S50XM, 5,000-LB. BASE CAP.,** 189" lift ht., 3-stage mast, cushion tires, LP pwr., S/N D187V28339A.  
**VERTICAL TURRET MILL**  
**BRIDGEPORT SERIES II, 11" x 58" tbl.,** 4 HP spdl. motor, 30" cross travel, 16" knee travel, spds. variable from 50-3,500 RPM, 5" quill travel, 40 taper, S/N 3444.  
**COLD SAW**  
**HABERLE H300A, 13" blade, 2 HP, 2-spd.,** built in swivel pedestal and vise.

**TURRET LATHE**  
**HITACHI SEIKI 4A II, 20" swing, 16-spds.** from 40-2,000 RPM, 6-sided turret and cross slide.  
**AC DRIVES**  
**(20) EURA DRIVES MDL. F1000-G0007T3B DRIVES,** (12) 460 v., (4) 380 v., (4) 220 v., all 3-phase 50-60 HZ, new.

**DON'T MISS THIS SALE!**



HYSTER 5,000-LB. CAP. FORKLIFT



EURA AC DRIVES



EURA AC DRIVES



HABERLE H300A COLD SAW

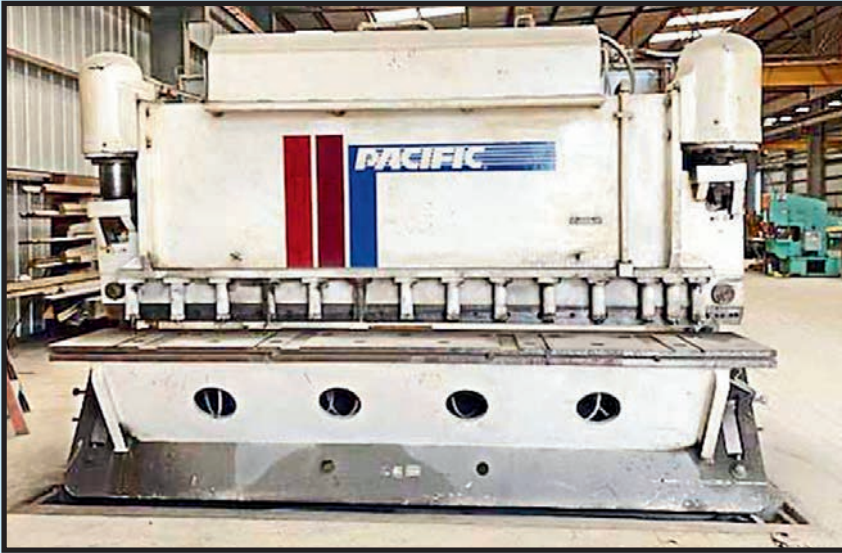
## LOCATION 8 HILL COUNTRY STEEL

13638 I.H. 10 East #2, Converse, Texas 78109

**INSPECTION:** By Appointment Only. Contact Todd Whittaker, (210) 667-9737 to schedule an appointment.

## HYDRAULIC SHEAR

**PACIFIC MDL. 500R12**, 1/2" x  
12', pwr'd. backgauge, manual  
gap adjustment, requires a pit.



## LOCATION 9 DIXIE CULLEN

8501 East Fwy., Houston, Texas 77029

**INSPECTION:** By Appointment Only. Contact Robert Brundage, (713) 691-4401

## VERTICAL TURRET LATHE

**56" BULLARD DYNATROL**, 70" swing to column, approx.  
72" under rail, 4-jaw tbl., 5-pos. turret, 100 HP motor, side  
head, chrome ways on cross rail, chip conveyor, S/N 32936  
(Seller will pay loading charge).



## LOCATION 10

Stored at

### T-REX ENG. & CONSTRUCTION

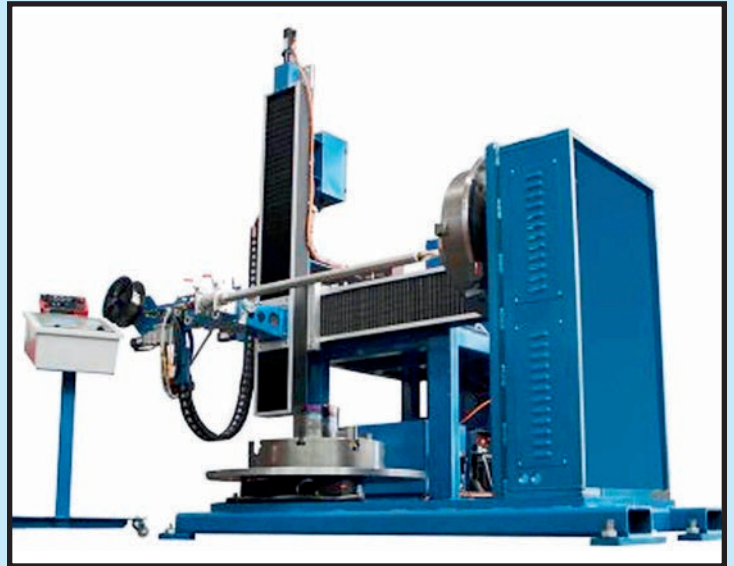
16425 Jacintoport Blvd., Houston, Texas 77015

**INSPECTION:** By Appointment Only.  
Contact Robert Brundage, (713) 691-4401

### CLADDING SYSTEMS

(2) UNUSED 2015 ARC SPECIALTIES MDL. ARC-05HVG PLC CONTROLLED HOT WIRE GAS TUNGSTEN ARC VERTICAL AND HORIZONTAL CLADDING SYSTEMS (STILL IN THEIR ORIGINAL SHIPPING CRATES!), w/elbow cladding and high deposition capability w/the following features:

1. ARC-05HV Control System w/Elbow Cladding and High Deposition Software
2. Teach and Repeat Programming
3. Oscillation Software for Elbow
4. Elbow Jig Fixture
5. Cross Slide Package (1.5 Meter Horizontal)
6. Welding Equipment
7. Positioning Equipment (Headstock and Turntable)
8. 60" Length, Adjustable Angled Head Bore Torch



## LOCATION 11 DALLAS AREA STORAGE FACILITY 2120 North Loop 12, Irving, Texas 75061

INSPECTION: Monday, August 24,  
9:00 A.M. to 4:00 P.M.

### DIESEL PIGGYBACK FORKLIFT

PRINCETON 5,000-LB. BASE CAP. MDL. PB50, new 2005, 4-cyl. CAT Mdl. 3024C diesel engine, 120" max. lift hit., 2-stage mast, side shift, pneu. tires, 48" forks, S/N 108403005.

### DIESEL SIDELoader FORKLIFT

BAUMAN 12,000-LB. BASE CAP. MDL. AS-60-14-40, diesel, \_\_\_" max. lift ht., \_\_\_" -stage mast, pneu. tires, \_\_\_" forks, S/N 4648.

### DIESEL FORKLIFT

TOYOTA 8,000-LB. BASE CAP. MDL. 7FDKU40, new 2004, 4-cyl. Toyota diesel engine, 159" max. lift ht., 98" 2-stage mast, side shift, dual drive pneu. tires, 42" forks, S/N 61631.

### LPG FORKLIFTS

(2) HYSTER 5,000-LB. BASE CAP. MDL. S50FT, new 2013, 4-cyl. Mazda LPG engine, 189" max. lift ht., 83" 3-stage mast, side shift, cushion tires, 42" forks, S/N F187V25262L, S/N F187V25172L.



PRINCETON 5,000-LB. CAP. DIESEL  
PIGGYBACK FORKLIFT



(1 OF 2) HYSTER 5,000-LB. CAP. LPG FORKLIFTS



BAUMAN 12,000-LB. CAP. DIESEL SIDELoader  
FORKLIFT



# ONLINE TIMED AUCTION

## LOCATIONS IN TEXAS, MICHIGAN & LOUISIANA

### BIDS START CLOSING ON TUESDAY, AUGUST 24 AT 10:00 A.M.

#### GO TO OUR WEBSITE CALENDAR AT [WWW.PMI-AUCTION.COM](http://WWW.PMI-AUCTION.COM) FOR THE LINK TO THE BIDSPOTTER CATALOG.

#### TERMS & CONDITIONS OF ON-LINE AUCTION SALE

An 18% Buyer's Premium will apply.

A 100% refundable \$3,000 (US bidders) or \$10,000 (foreign bidders) deposit is required for all webcast bidding unless prior approval has been obtained from the auction company.

**ALL BIDS ARE MADE AND RECEIVED UNDER THE TERMS HEREINAFTER SET FORTH TO WHICH TERMS BIDDERS AGREE BY MAKING THEIR BID AT THE SALE. THESE TERMS CANNOT BE ALTERED EXCEPT BY THE AUCTIONEER. NO EMPLOYEE HAS AUTHORITY TO MODIFY SAME. THE OWNER AND/OR AUCTIONEER RESERVE THE RIGHT TO ADD TO OR MODIFY THE TERMS OF THE SALES.**

All payments must be made by Cash, Cashier's Check, Wire Transfer or Company Check with Bank Letter of Guarantee to Plant & Machinery, Inc. (PMI). Here is an example of what your letter should be: **[Mr. "Customer Name" representing "Company Name" is a customer of this bank. This bank will guarantee unqualified payment to Plant & Machinery, Inc. on the account listed herein up to the amount of \$ \_\_\_\_\_. This letter is good until September 24, 2020.]**

All bidders are required to give full name, company name, address, phone, fax, email address, and bank information when registering. All bidders must register before bidding.

All bids must be paid in full within two business days after the bids have closed. The Auctioneer shall determine the bidding increments. Some items may be auctioned with reserve.

All purchases must be removed within two weeks after the bids have closed, or, within the timeframe posted on the sale web page. No lot can, on any account, be removed prior to PMI having been paid in full. Removal shall be at the expense, risk and liability of the Purchaser. Purchases will be delivered only on presentation of paid bill. Auctioneer shall not be responsible for goods not removed within the aforesaid time.

Riggers, movers, electricians or buyer performing work at the Auction Sites must provide Auctioneer with evidence of insurance. The insurance coverage must be at a level acceptable to Auctioneer and to the Seller.

All checks for deposits and balances due shall be payable to the order of PLANT & MACHINERY, INC. unless instructed otherwise. All bills must be paid to the Houston headquarters offices of the Auctioneer at 1304 Langham Creek Drive, Suite 454, Houston, TX, 77084 or by wire transfer directly to the bank specified in the wire transfer instructions provided for this on-line auction. The full purchase price on all lots sold to the same buyer must be paid within the time fixed and before removal of any of the goods.

THE AUCTIONEER SHALL NOT BE RESPONSIBLE FOR THE CORRECT DESCRIPTION, GENUINENESS, AUTHENTICITY OF, OR DEFECT IN ANY LOT, AND MAKES NO WARRANTY IN CONNECTION THEREWITH. NO SALES SHALL BE SET ASIDE NOR ALLOWANCE MADE ON ACCOUNT OF ANY INCORRECTNESS, ERROR IN CATALOGING, OR ANY IMPERFECTION NOT NOTED, NO DEDUCTION ALLOWED ON DAMAGED ARTICLES, ALL ARTICLES BEING EXPOSED FOR PUBLIC EXHIBITION, AND SOLD "AS IS" AND WITHOUT RECOURSE. ARTICLES ARE NOT WARRANTED AS MERCHANTABLE OR FIT FOR ANY PARTICULAR PURPOSE, AND NO CLAIM MAY BE MADE BY PURCHASER RELATING TO THE CONDITION OR USE OF ARTICLES PURCHASED, OR FOR PROXIMATE OR CONSEQUENTIAL DAMAGES ARISING THEREFROM.

Articles purchased may not incorporate approved activating mechanisms, operating safety devices or safety guards, as required by OSHA or otherwise. It is Purchaser's responsibility that articles purchased be so equipped and safeguarded to meet OSHA and any other requirements before placing such articles into operation.

Purchaser agrees to indemnify and hold Auctioneer harmless from and against all claims and liabilities relating to the condition or use of the articles purchased or failure of user to follow instructions, warnings or recommendations of the manufacturer, or to comply with federal, state and local laws applicable to such articles, including OSHA requirements, or for proximate or consequential damages, costs or legal expenses arising therefrom.

No claims will be allowed after removal of goods from premises.

Auctioneer shall not, in any event, be liable for non-delivery or any other matter or thing, to any Purchaser of any lot other than for the return to the Purchaser of the deposit or sum paid on said lot, should the Purchaser be entitled thereto.

In default of payment of bills in full within the time therein specified, the Auctioneer in addition to all other remedies allowed by law, may retain all monies received as deposit or otherwise, as liquidated damages. Lots not paid for and removed within the time allowed herein may be resold at public or private sale without further notice, and any deficiency, together with all expenses and charges of re-sale, will be charged to the defaulting Purchaser.

Persons attending during exhibition, sale or removal of goods assume all risks of damage of or loss to person and property and specifically release the Auctioneer from liability therefor. Neither the Auctioneer nor his principal shall be liable by reason of defect in or condition of the premises on which the sale is held.

The Auctioneer reserves the right to withdraw from sale any of the property listed or to sell at this sale property not listed, and also

reserves the right to group one or more lots into one or more selling lots or to subdivide into two or more selling lots. Whenever the best interest of a Seller will be served, the Auctioneer reserves the right to sell all the property listed, in bulk.

Where items are sold by estimated weight, count or measure, the Purchaser will be billed for and required to pay for the estimated weight, count or measure. If, upon delivery, any shortage exists, the Purchaser will receive a refund at the rate of purchase. If there be an excess, the Purchaser will be required to pay for such excess, at the rate of purchase.

Reserve: There are RESERVE amounts attached to selected items in this auction. When bidding, you will be notified by the online bidding system as to whether or not you have met the RESERVE amount. No bid will be considered a winning bid unless the RESERVE amount has been met. A bid in the amount of the RESERVE, or higher, will be considered a winning bid. Please check your bid and bid status before the Lot closes.

The Auctioneer reserves the right to reject any and all bids, alter the order of sale, and accept bids made on behalf of the Seller.

The record of sale kept by the Auctioneer will be taken as final in the event of any dispute.

The Auctioneer is acting as agent only and is not responsible for the acts of its principals. Purchaser acknowledges, as an inducement to Seller to commit Purchaser to bid, that Purchaser has independently inspected the goods bid upon by the Purchaser, and acknowledges to the Seller that Purchaser is acquiring all goods "AS IS, WITH ALL FAULTS" and "WITH REMOVAL AT PURCHASERS' RISK AND EXPENSE" and agrees to protect, indemnify and hold harmless the Seller from any and all claims, demands, causes of actions, liabilities and judgments relating to the conditions or use of the goods.

Seller, if not the same as the Auctioneer, shall have the rights, protections and benefits afforded to the Auctioneer as set forth herein.

Although all information has been obtained from sources deemed reliable, the auctioneer and seller make no warranty or guarantee, expressed or implied, as to the accuracy of the information herein contained, or contained in our catalog. It is for this reason that buyers should avail themselves of the opportunity to make inspection prior to the auction. Although it is not likely, auction sales are subject to cancellation or postponement. Kindly contact auctioneer prior to attendance.

**ANY ADDITIONAL PROVISIONS OR AMENDMENTS TO THE ABOVE LISTED TERMS WILL BE POSTED TO THE ON-LINE SALE WEB PAGE BY THE AUCTIONEER PRIOR TO THE START OF BIDDING.**